



DELTA SAMA JAYA SDN. BHD. (DSSB)

(Company No. 500276-W)

(Registered with Ministry of Finance, Tenaga Nasional Berhad (TNB), CIDB, KTMB, Telekom (TM), etc.)

CABLE CLEATS



No. 23, Jalan Perdana 6/8, Pandan Perdana, 55300 Kuala Lumpur.

Tel : + 603 - 9282 4007, 03 - 9281 3778 Fax : + 603 - 9287 0705

Website : www.substation.com.my

and

Website : www.cablecleat.com.my

E-mail : samajaya@substation.com.my (General)

E-mail: accounts@substation.com.my, sales@substation.com.my (Sales)

COMPANY INTRODUCTION

Delta Sama Jaya Sdn Bhd (DSSB), incorporated in 1999, has grown steadily to become one of the country's largest cable cleats suppliers and manufacturer today.

Through its far sighted planning and unceasing product and service innovation, **DSSB** has successfully cultivated a manufacturing profile of an extensive range of cable cleats products.

From Aluminium cables cleats for both domestic and export markets to Polyamide/ Nylon (Halogen Free) cable cleats, **DSSB** has achieved a distinguished reputation as a leading supplier of power and telecommunication cables cleats to major corporations both local and foreign.

The cables cleats manufactured today by **DSSB** are internationally renowned for its quality standards.

This catalogue serves as a guide to various **DSSB** cable cleats application.

Introduction

Our cable cleats are manufactured using low-smoke zero-halogen compounds that provide many advantages and protection over standard constructions of cable. Highly engineered polymers developed after years of research has produced a new breed of cable cleats that offer excellent electrical and mechanical characteristics, superior flame resistance, low smoke production and reduced toxicity.

These cable cleats are ideal for use in environments where high-performance, reliability and safety are required. Best of all, the applications for our cable cleats are virtually endless. The advantages of this product make it an excellent candidate for use in a broad range of applications including :

Utility : power generation, co-generation and merchant power

Industrial plants : petrochemical, pulp and paper, pharmaceutical & waste water treatment

Data Centers : computer rooms, switching centers and central offices

Highly populated facilities : multi-storey buildings, hotels, hospitals, sports centers, airports and mass transit stations

What are halogens and why are they dangerous?

Halogens are a group of highly reactive elements including fluorine, chlorine, bromine, iodine and astatine. When products containing halogens are burned, they produce very dangerous gasses. Public awareness of these dangers began after several tragic fires claimed the lives of victims who inhaled deadly halogenated fumes.

Several fires, including those at the Beverley Hills Supper Club, London's Kings Cross Underground Station and Germany's Düsseldorf Airport, have lead to important changes that significantly limit where cable cleats containing halogens may be used. Many organizations, local authorities and governments have undertaken broad initiatives to eliminate the production of halogenated material. In Asia, the United Kingdom and many European communities, the use of cable cleats containing halogens is highly regulated, and in some areas completely prohibited.

Why is zero halogen better?

Two halogens-chlorine and fluorine-are extensively used in compounds for cable cleats. Many common materials like PVC, Hypalon®, Neoprene®, and FEP and PTFE Teflon® contain significant amounts of these halogens. PVC, for example, contains 29% chlorine by weight; CPE 19% chlorine by weight; and Teflon has 76% fluorine by weight.

Halogenated compounds are normally very stable. When they burn, however, the halogens separate and become highly reactive, forming very toxic, extremely dangerous and corrosive gasses that can significantly damage organic, inorganic and metallic materials. The hydrogen chlorine gas produced from burning PVC, for example, is similar to mustard gas.

These halogenated gasses are dangerous because when in contact with water they immediately form acid. The chlorine from PVC makes hydrochloric acid and the fluorine from Teflon makes hydrofluoric acid, both of which are among the strongest and most corrosive acids. The water source that the gasses use to form these acids can be found almost anywhere-moisture in the eyes, throat and lungs of individuals with whom it comes in contact, as well as fire sprinkler systems and even humidity in the air.

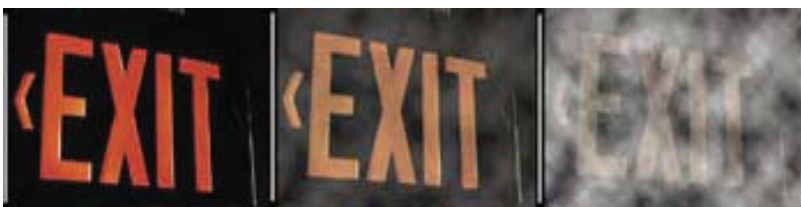
Fires involving the combustion of halogenated materials can be devastating. Inhalation of dangerous fumes can cause serious harm or even death to humans. Acid rain and fumes can quickly destroy expensive industrial and computer equipment.

Cable cleats containing halogens also produce significantly higher levels of carbon monoxide (CO) gas during combustion. Emission levels of this dangerous and potentially lethal gas are reduced by as much as 360% in non-halogenated cable cleat constructions.

Low Smoke = Increased Safety

When halogenated materials burn it produces thousands of tiny particles consisting of gas, soot and chemical residue. This combination of by products is what is seen as smoke. Cable manufactured with non-halogenated material produces far less residue when burned. Less residue also means less smoke.

Our cable cleats contain no halogens, so should it ever be exposed to flame, far less vision - impairing smoke is produced.



Clearly it's easy to see the advantage.
Smoke obscuration is 4 times less than PVC
Peak smoke release is 11 times less than PVC
Total smoke release is 4 times less than PVC

The Future

Our cable cleats represents progressive innovation in cable cleats design and technology. It provides significant advantages over traditional constructions of cable cleats, and adds a new dimension of functionality, value and safety that was previously unavailable.

Our cable cleats are the product of the future, and we has it in stock and ready to ship.

**ALUMINIUM
(NON FERROUS
METAL)
SINGLE
CABLE CLEATS

(FIRE PROOF)**

Aluminium Alloy (Non Ferrous Metal) Single Cable Cleats.

Tested To IEC61914

Features:

- * *Halogen Free Content . (NSHF)*
- * *Total Fire Retardant*
- * *No maintenance required.*
- * *All Weather & UV resistant*
- * *No Smoke When Burn.*
- * *Very Good Mechanical Strength*
- * *Product Life warranty.*
- * *Non magnetic*
- * *Use in many utility substation.*
- * *Non - ferrous & Non-magnetic*
- * *Anti - Termite and Anti- Rodent*
- * *Easy and fast installation*



Applications:-

Where cable supports are require to performance 24/7 , and to be use in places where high performance, reliability and safeguard of life and equipment , for eg.

- Utility : Power generation, Co- generation, IPP power , Substations.
 Industrial : Petrochemical, Paper, Pharmaceutical & waste water treatment.
 Buildings : Airports, Shopping Complex, Hotels, Hospitals, Mass Transit Station, Tunnels, Factories, High Rise Buildings.
 Data Center : Central Office, Computer centers, Switching Centers.





Redefining Supply
An ISO 9001:2015 &
14001:2015 Company

DELTA SAMA JAYA SDN. BHD. (DSSB) 199901025376 (500276-W)

No. 23G & 23M, DSSB Building, Jalan Perdana 6/8, Pandan Perdana,
55300 Kuala Lumpur, Malaysia

Tel: +603-92824007, +603-92813778 Fax: +603-92870705

Email: (HQ): samajaya@substation.com.my, (Sales): sales@substation.com.my

Website: www.substation.com.my





Redefining Supply
An ISO 9001:2015 &
14001:2015 Company

DELTA SAMA JAYA SDN. BHD. (DSSB) 199901025376 (500276-W)

No. 23G & 23M, DSSB Building, Jalan Perdana 6/8, Pandan Perdana,
55300 Kuala Lumpur, Malaysia

Tel: +603-92824007, +603-92813778 Fax: +603-92870705

Email: (HQ): samajaya@substation.com.my, (Sales): sales@substation.com.my

Website: www.substation.com.my



Close up view of Cable Cleat (XLPE power cable 630mmsq



PROTON 132/33kV Substation 90 MVA Transformer



Redefining Supply
An ISO 9001:2015 &
14001:2015 Company

DELTA SAMA JAYA SDN. BHD. (DSSB) 199901025376 (500276-W)

No. 23G & 23M, DSSB Building, Jalan Perdana 6/8, Pandan Perdana,
55300 Kuala Lumpur, Malaysia

Tel: +603-92824007, +603-92813778 Fax: +603-92870705

Email: (HQ): samajaya@substation.com.my, (Sales): sales@substation.com.my

Website: www.substation.com.my



BATU TIGA 132/33 kV SUBSTATION (Earthing Transformer)



BATU TIGA 132/33 kV SUBSTATION (90 MVA Transformer)



PROTON 132/33 kV SUBSTATION (Cable Celler)



PROTON 132/33 kV SUBSTATION (Cable Cellar) - Another View



An ISO 9001 & 14001
Company

DELTA SAMA JAYA SDN. BHD. (DSSB) (Reg. No: 500276-W)

No. 23G & 23M, DSSB Building, Jalan Perdana 6/8, Pandan Perdana,
55300 Kuala Lumpur, Malaysia
Tel: +603-92824007, +603-92813778 Fax: +603-92870705
Email: (HQ): samajaya@substation.com.my, (Sales): sales@substation.com.my
Website: www.substation.com.my, www.cablecleat.com.my
GST Registration No: 001134116864



500kV OLAK LEMPIT SUBSTATION



500kV OLAK LEMPIT SUBSTATION



**ALUMINIUM
(NON FERROUS
METAL)
TREFOIL CABLE
CLEATS

(FIRE PROOF)**

Trefoil Aluminium Alloy (Non Ferrous Metal) Cable Cleats.

For supporting of power cables in trefoil formation with various outer diameter.
Very Easy and Fast Installation on any steel structure or concrete surface.
Special type and other sizes cable clamps are also available.

Tested To IEC61914

Features:

- * Halogen Free Content . (LSHF)
- * Total Fire Retardant
- * No maintenance required.
- * All Weather resistant
- * No Smoke When Burn.
- * Very Good Mechanical Strength
- * Product Life warranty.
- * Very Professional look
- * Use in many utility substation.
- * Non - ferrous & Non-magnetic
- * Anti - Termite and Anti- Rodent



275 kV Power Cables



33 kV Aluminium Power Cables.



275kV Power Cables



Various types and sizes of Aluminium and nylon cable cleats.



Aluminium trefoil cable cleats at Kota Damansara 132, 33 and 11 kV Substation.



Aluminium trefoil cable cleats (fire proof) installed at Pengkalan 132 kV S/S.

Lahat Datu POIC 132kV Substation





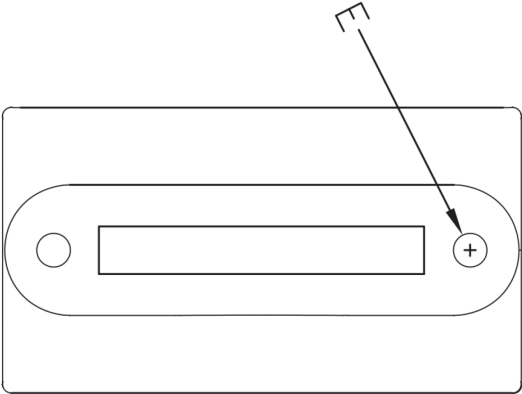
**ALUMINIUM
(NON FERROUS
METAL)
SINGLE
CABLE CLEAT**

TECHNICAL DRAWING

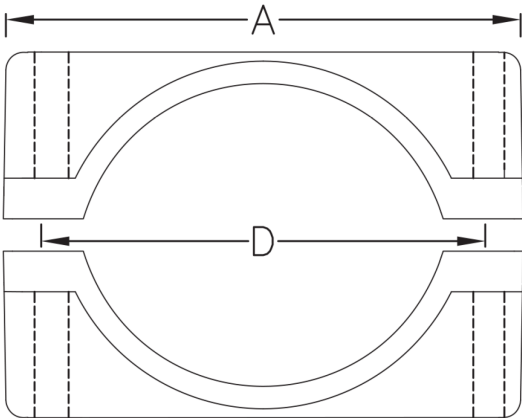
Rev.	Description	Approved by	Signature	Date
01.	FIRST ISSUE	JOHN HOWARD		28/03/2007
05.	FIFTH ISSUE	JOHN HOWARD		24/8/2024



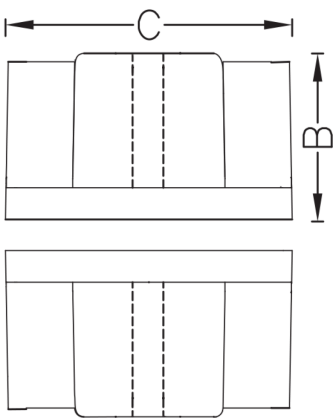
Cat No.	Cable Dia.	A	B	C	D	E
SAC1827	18-27	80	20	50	45	10
SAC2838	28-38	87	23	60	55	11
SAC3953	39-53	102	32	60	75	11
SAC5468	54-68	123.6	40	75	85	12.3
SAC6682	66-82	133	45	70	101	12.5
SAC83103	83-103	159	55	75	123	12.5
SAC100114	100-114	170	65	80	133	12.5
SAC115138	115-138	220	76	73	180	14
SAC136170	136-170	249.5	79.4	73	208	14
SAC171190	171-190	274	101	105	232	18



TOP VIEW



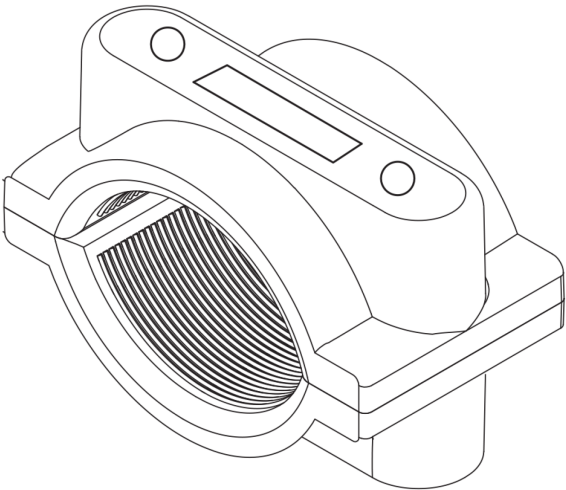
FRONT VIEW



SIDE VIEW

NOTES:

- A = Length of Cleats
- B = Height of Cleats
- C = Width of Cleats
- D = Centre of Hole to Centre of Hole
- E = Size of Hole (For mounting Bolts)




ISOMETRIC VIEW (3D)

TWO HOLE ALUMINIUM ALLOY CABLE CLEATS FOR SINGLE POWER CABLE

NOTE : WE RESERVE THE RIGHTS IN THIS DOCUMENT AND IN THE INFORMATION CONTAINED THEREIN.
REPRODUCTION, USE OR DISCLOSURE TO THIRD PARTIES WITHOUT EXPRESS AUTHORITY IS STRICTLY FORBIDDEN.

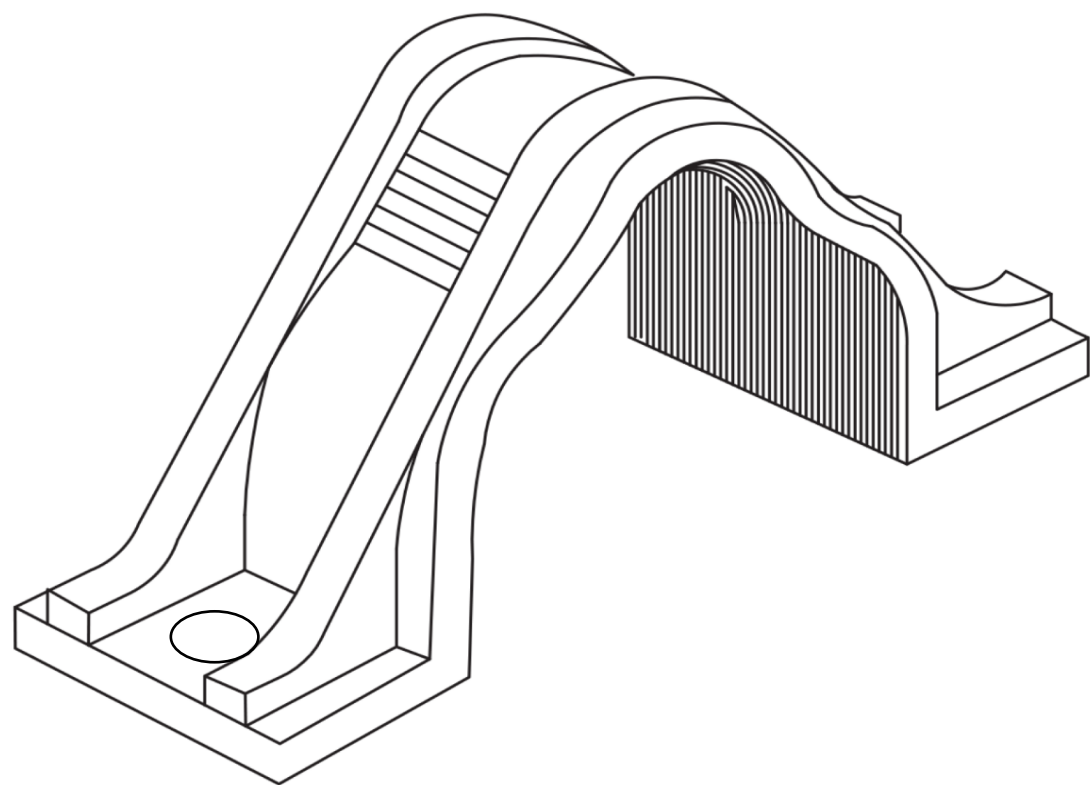
DIMENSION TOLERANCE : $\pm 2.0\text{mm}$
All dimensions are to be in mm. unless specified otherwise.

Item	Description	Pcs.	Catalogue No.	Material	Notes
Company Name:		Name		Signature	
 DELTA SAMA JAYA SDN. BHD.(500276-V) No.236 & 23M, Jalan Perdana 6/8, Pandan Perdana, 55300 Kuala Lumpur. Tel: +603-9282 4007, +603-9281 3778 Fax: +603-9287 0705 E-mail: samojaya@streamyx.com Website: www.substation.com.my		Designed by:		Alex Lee	
		Checked by:		June Ng	
		Approved by:		John Howard	
Title:		Aluminium Alloy Single Cable Cleats		Revision: 05	
Substitute for : 04		Catalogue number: SAC1827 to SAC171190			

**ALUMINIUM
(NON FERROUS
METAL)
TREFOIL CABLE
CLEATS**

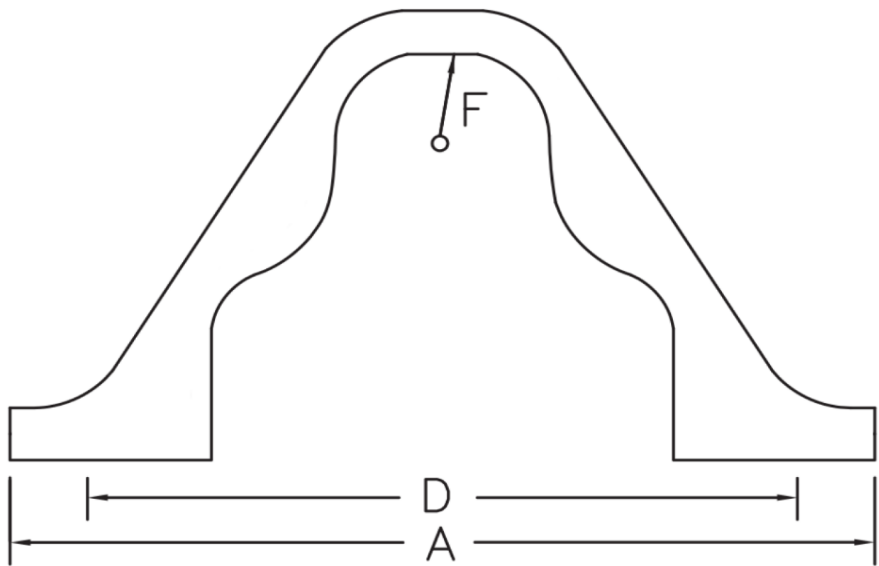
TECHNICAL DRAWING

Rev.	Description	Approved By	Signature	Date
01.	FIRST ISSUE	KENT OBERG		12/5/1962
07.	SEVENTH ISSUE	TOM ROSE		23/8/2024

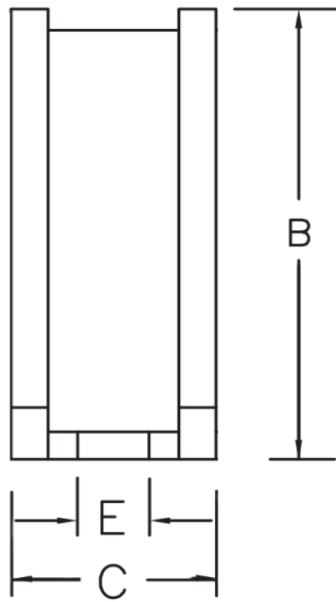


ISOMETRIC VIEW (3D)

Cat No.	Cable Dia.	A	B	C	D	E	F
TAC 32	29 - 32	160	76	40	120	11.0	16.0
TAC 36	33 - 36	165	89	40	128	11.0	18.0
TAC 40	37 - 40	170	93	40	138	11.0	20.5
TAC 44	41 - 44	176	103	48	144	11.0	22.5
TAC 47	45 - 47	189.5	111	51	155.5	12.0	23.5
TAC 50	48 - 50	210	120	50	170	11.0	26.0
TAC 53	51 - 53	212	130	48	176	11.0	26.5
TAC 55	54 - 55	247	166	55	204	11.0	27.5
TAC 60	56 - 60	270	165	56	221	12.0	30.0
TAC 63	61 - 63	290	179	56	235	14.0	31.0
TAC 66	64 - 66	210	154	52	200	11.0	32.5
TAC 70	67 - 70	253	150	49	210	11.6	33.5
TAC 73	71 - 73	250	160	54	219	12.0	35.0
TAC 77	74 - 77	270	165	56	221	12.0	38.5
TAC 81	78 - 81	290	179	56	230	14.0	40.5
TAC 85	82 - 85	293	176	58.5	242.8	12.0	42.5
TAC 90	86 - 90	310	193	56	249	14.0	42.5
TAC 93	91 - 93	315	197	65	267	13.0	45.0
TAC 96	94 - 96	318	170	65	250	14.0	44.0
TAC 99	97 - 99	321	204	65	275	14.0	49.5
TAC 102	100 - 102	320	205	65	258	12.0	47.0
TAC 105	101 - 105	332	215	65	286	14.0	52.0
TAC 109	106 - 109	325	220	65	260	14.0	50.0
TAC 112	110 - 112	366	238	65	314	14.0	56.0
TAC 118	113 - 118	405	241	65	338.5	14.0	59.0
TAC 170	168 - 172	464	357	62	424	18.0	86.0



FRONT VIEW



SIDE VIEW

- NOTES:
- A = Length of Cleats
 - B = Height of Cleats
 - C = Width of Cleats
 - D = Centre of Hole to Centre of Hole
 - E = Size of Hole (For mounting Bolts)
 - F = Diameter of Power Cable

TWO HOLE CABLE CLEATS (TREFOIL CONFIGURATION) FOR THREE CABLE

NOTE : WE RESERVE THE RIGHT IN THIS DOCUMENT AND THE INFORMATION CONTAINED THERIN. REPRODUCTION, USE OR DISCLOSURE TO THIRD PARTIES WITHOUT EXPRESS AUTHORITY IS STRICTLY FORBIDDEN.

N.T.S : Not To Scale
Dimension Tolerance : ± 10 mm.
All deimension are to be in mm. unless soecified otherwise.

Item	Description	Pcs.	Catalogue No.	Material	Notes
<div>Company Name:</div> <div></div> <div>DELTA SAMA JAYA SDN. BHD.</div> <div>Reg No.199901025376 (500276-W)</div> <div>23G & 23M , DSSB Building, Jalan Perdana 6/8</div> <div>Pandan Perdana,55300, Kuala Lumpur.</div> <div>Tel: +603-9282 4007, +603-9281 3778 Fax:+603-9287 0705</div> <div>Email: samajaya@substation.com.my</div> <div>Website: www.substation.com.my</div>			Name	Signature	Substitute for : Revision 06
		Designed By:	Bjarne Ahlskong		Catalogue Number : TAC 32 to TAC 170
		Checked By:	Juris Pepulis		
		Approved By:	Kent Oberg		
		Title : Aluminium Alloy Trefoil Cable Cleats			Revision : 07

SINGLE CABLE CLEATS

(Non-Metallic)

SINGLE CABLE CLEATS (FOR OUTDOOR & INDOOR)

It provides high impact with increased strength, stiffness, surface hardness, and higher continuous use temperature.

Other benefits include reduced distortion under long-term stress.

Material: Polyimide (PA) with glass fibre reinforced (UV) or Polypropylene (PP).

Tested To IEC61914

Feature

- * **Flame Retardant properties.**
- * **Use in many substation.**
- * **No maintenance required.**
- * **Resistant to Oil, UV radiation, salt, moisture & acids.**
- * **Non Magnetic & non - Ferrous**
- * **Good Mechanical Strength**
- * **Good for Corrosive environment**
- * **Very Easy and fast installation.**
- * **Halogen Free Content.**
- * **V-2 (UL94) self-extinguishing.**
- * **Stackable.**



Applications:-

Where cable supports are require to performance 24/7 , and to be use in places where high performance, reliability and safeguard of life and equipment , for example

Utility	: Power generation, Co- generation, IPP power , Substations.
Industrial	: Petrochemical, Paper, Pharmaceutical & waste water treatment.
Buildings	: Airports, Shopping Complex, Hotels, Hospitals, Mass
	: Transit Station, Tunnels, Factories, High Rise Buildings.
Data Center	: Central Office, Computer centers, Switching Centers.



Cable cleats installed for 11 kV Power Cables



Cable cleats installed for 275 kV power Cables



Tested To IEC61914

Features

- * **Flame Retardant properties.**
- * **Use in many substation.**
- * **No maintenance required.**
- * **Resistant to Oil & UV radiation.**
- * **Non Magnetic & non - Ferrous**
- * **Good Mechanical Strength**
- * **Good for Corrosive environment**
- * **Very Easy and fast installation.**
- * **Halogen Free Content.**



Coloured Cable Cleat used for easy identification of phases

Applications:-

Where cable supports are require to performance 24/7 , and to be use in places where high performance, reliability and safeguard of life and equipment , for example

- Utility : Power generation, Co- generation, IPP power , Substations.
- Industrial : Petrochemical, Paper, Pharmaceutical & waste water treatment.
- Buildings : Airports, Shopping Complex, Hotels, Hospitals, Mass Transit Station, Tunnels, Factories, High Rise Buildings.
- Data Center : Central Office, Computer centers, Switching Centers.



Coloured Cable cleats installed in a mobile substation



Coloured Cable cleats installed at the LV side

TREFOIL CABLE CLEATS

(Non-Metallic)

Trefoil Cable Cleats

For supporting of power cables in trefoil formation with various outer diameter.

Very Easy and Fast Installation on any steel structure or concrete surface.

Special type and other sizes cable clamps are also available.

Material: Polymide (PA) with glass fibre reinforced (UV) or Polypropylene (PP).

Tested To IEC61914

Features :

- * Halogen Free Content.
- * No maintenance required.
- * All Weather resistant.
- * Good Mechanical Strength.
- * High impact resistance.
- * Corrosion resistant.
- * Use in utility substation.
- * Non - ferrous & magnetic.



Non-Metallic Trefoil Cable Cleats installed at
 Ampang 275 / 132 kV substation.



Non-Metallic Trefoil Cable Cleats installed at cable cellar at Silibin 132 kV Substation.

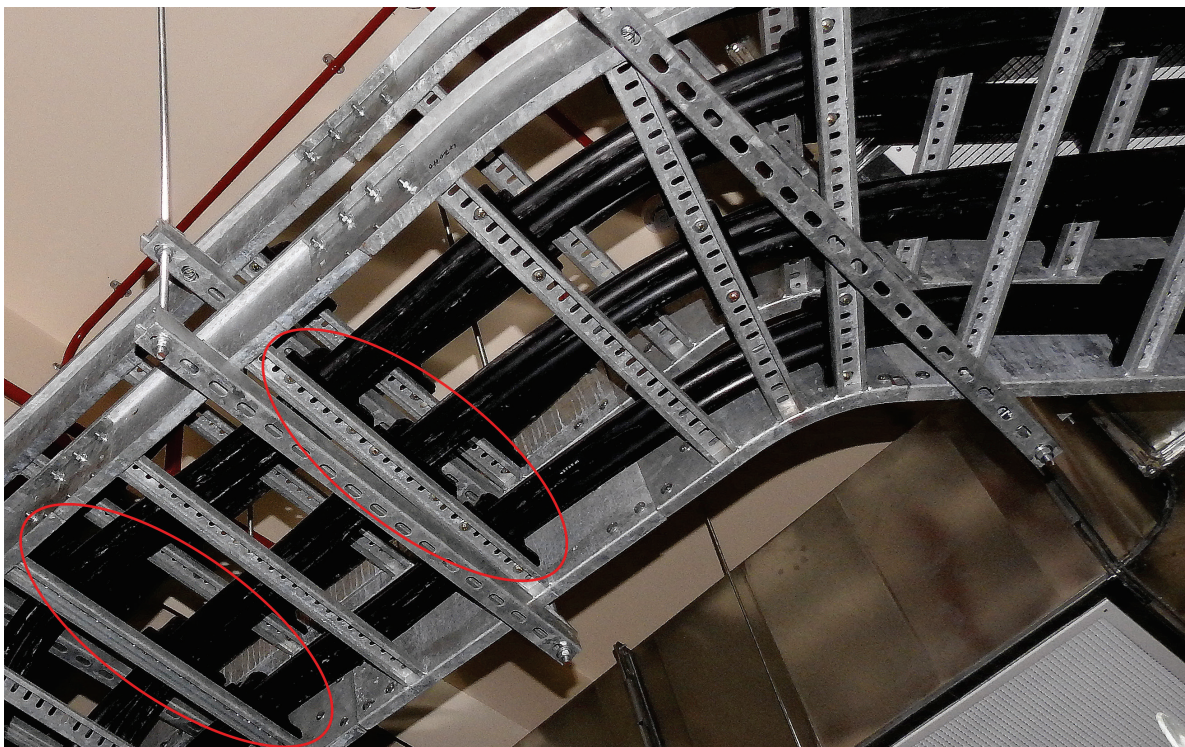
Trefoil Cable Cleats

*For supporting of power cables in trefoil formation with various outer diameter.
Very Easy and Fast Installation on any steel structure or concrete surface.
Special type and other sizes cable clamps are also available.*

Tested To IEC61914

Features :

- * Halogen Free Content.
- * No maintenance required.
- * All Weather resistant, UV protection.
- * Good Mechanical Strength.
- * High impact resistance.
- * Corrosion resistant.
- * Use in utility substation, public area.
- * Non - ferrous & magnetic.
- * Fire Retardant

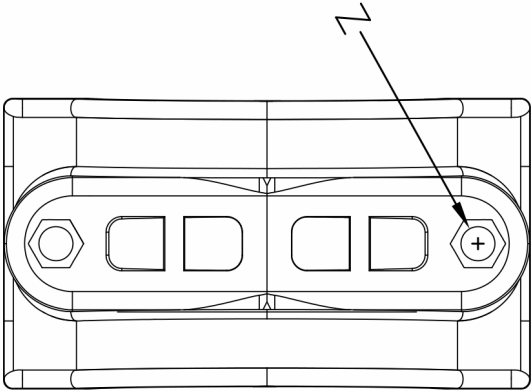


Non-Metallic Trefoil Cable Cleats installed at LRT Kelana Jaya Line Station 11 (Alam Megah).

SINGLE CABLE CLEATS

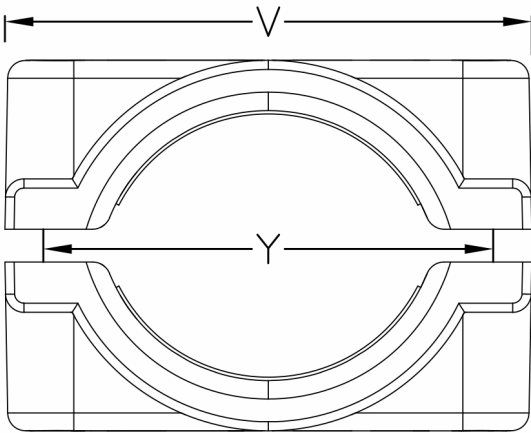
TECHNICAL DRAWING

Rev.	Description	Approved by	Signature	Date
01.	First Issue	Mario Antonino		16/01/1962
11.	New Cable Cleats SNC139180	Stefan Rodigruez		19/12/2024

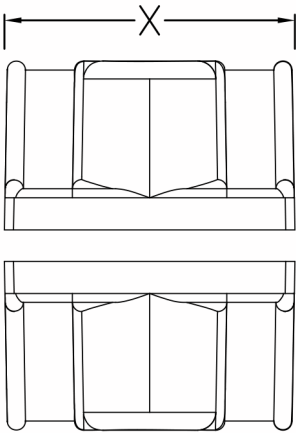


TOP VIEW

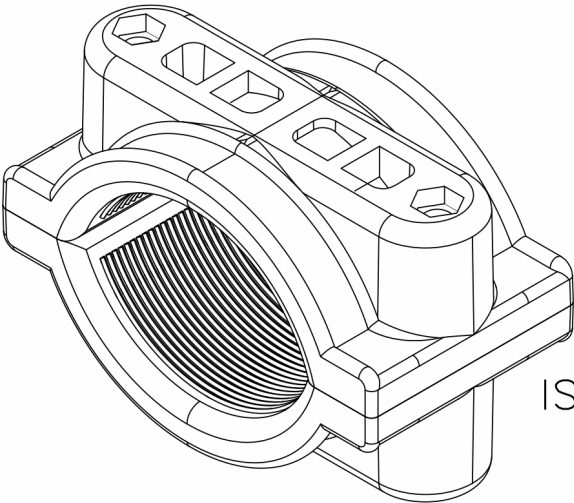
Cat No.	Cable Dia.	V	W	X	Y	Z
SNC1827	18 - 27	77	16.5	45	50	10
SNC1827 S	18 - 27	61.38	15.9	30	45	10
SNC2935	29 - 35	68.5	21.5	30	54	10
SNC2842	28 - 42	94	20	45	65	10
SNC2842 S	28 - 42	76.44	20.9	30	60	10
SNC4356	43 - 56	106	31	60	78	12
SNC5476	54 - 76	118.5	36.5	63	90	12
SNC7488	74 - 88	132	43.5	74	112	12
SNC87102	87 - 102	157	51	83	125	14
SNC103116	103 - 116	184.5	59	102	148	14
SNC117138	117 - 138	205	75	105	162	14
SNC139180	139 - 180	260	84	93	210	18



FRONT VIEW



SIDE VIEW



ISOMETRIC VIEW (3D)

- NOTES:
- V = Length of Cleats
 - W = Height of Cleats
 - X = Width of Cleats
 - Y = Centre of Hole to Centre of Hole
 - Z = Size of Hole (For mounting Bolts)

TWO HOLE CABLE CLEATS (NON METALLIC) FOR SINGLE POWER CABLE

NOTE : WE RESERVE THE RIGHTS IN THIS DOCUMENT AND IN THE INFORMATION CONTAINED THEREIN.
 REPRODUCTION, USE OR DISCLOSURE TO THIRD PARTIES WITHOUT EXPRESS AUTHORITY IS STRICTLY FORBIDDEN.

DIMENSION TOLERANCE : ± 5.0mm
 All dimensions are to be in mm. unless specified otherwise.

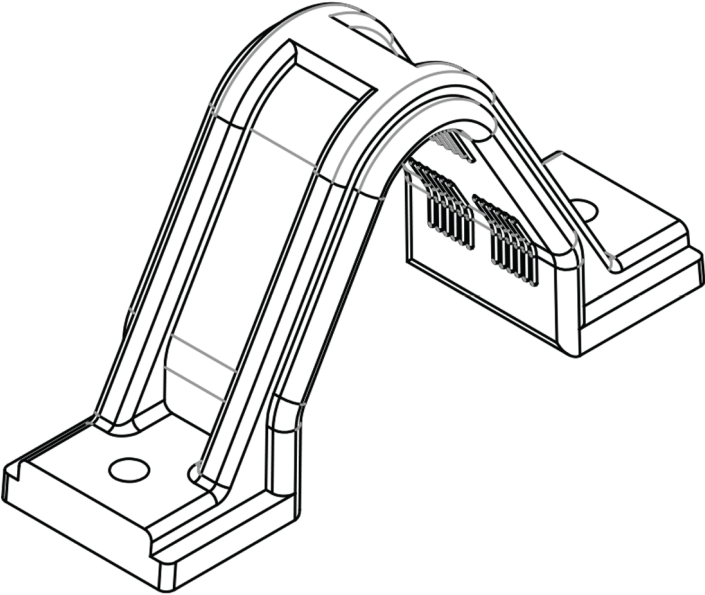
TREFOIL CABLE CLEATS

TECHNICAL DRAWING

Rev.	Description	Approved by	Signature	Date
07	Additional of Bigger Trefoil Cable Cleats	ISAGANI OCAMPO		12/2/2015
10	Size list update for Trefoil Cable Cleats	HO		23/8/2024

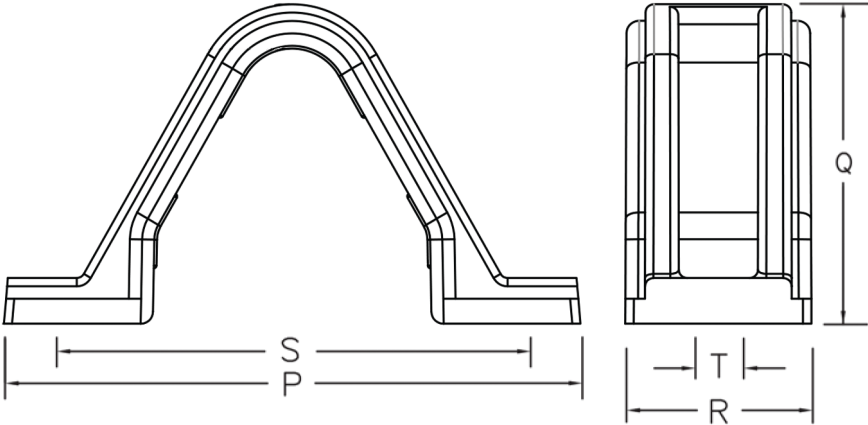
Cat No.	Cable Dia.	P	Q	R	S	T
TNC 27	25 - 27	128	70	56	106	12
TNC 33	31 - 33	145	81	55	120	12
TNC 40	37 - 40	161	100	55	136	12
TNC 40	41 - 44	175	95	55	150	12
TNC 50	48 - 50	180	109	65	148	14
TNC 60	56 - 60	225	140	65	185	14
TNC 60	61 - 63	210	135	60	180	14
TNC 73	71 - 73	235	160	65	200	14
TNC 99	97 - 99	315	215	90	267	14
TNC 112	110 - 112	340	242	90	286	14

DIMENSION TOLERANCE: ±5.0mm




NOTES:

- P = Length of Cleats
- Q = Height of Cleats
- R = Width of Cleats
- S = Centre of Hole to Centre of Hole
- T = Size of Hole (For mounting Bolts)
- V = Height of Base



NOTE : WE RESERVE THE RIGHTS IN THIS DOCUMENT AND IN THE INFORMATION CONTAINED THEREIN.
REPRODUCTION, USE OR DISCLOSURE TO THIRD PARTIES WITHOUT EXPRESS AUTHORITY IS STRICTLY FORBIDDEN.

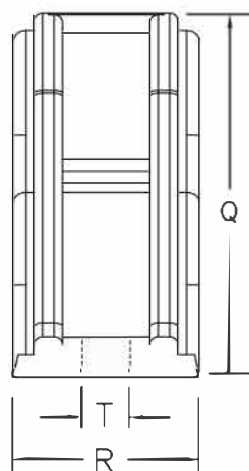
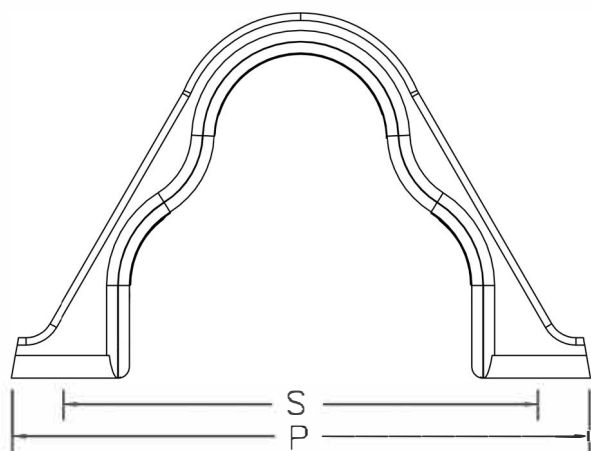
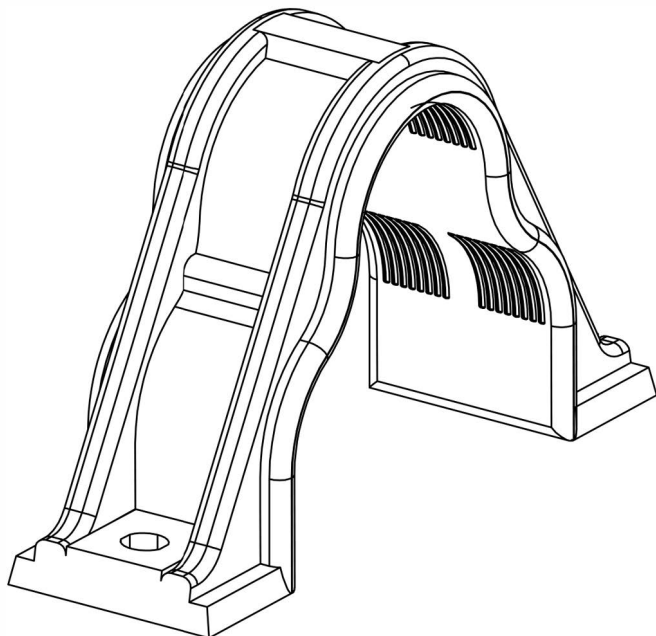
All information are subject to changes without prior notice.
All dimensions are to be in mm. unless specified otherwise.

Item	Description	Pcs.	Catalogue No.	Material	Notes
Company Name:		Name		Signature	
 DELTA SAMA JAYA SDN. BHD.(500278-W) No.236 & 23M, Jalan Perdana 6/8, Pandan Perdana, 55300 Kuala Lumpur. Tel: +603-9282 4007, +603-9281 3778 Fax: +603-9287 0705 E-mail: samajaya@streamyx.com Website: www.cablecleat.com.my		Designed by:		Leif Olsson	
		Checked by:		Stefan Zarrouati	
		Approved by:		Mario Antonino	
		Title:		Non-Metallic Cable Cleats	
			Substitute for :		09
			Catalogue number:		TNC 27- TNC 112
					10

Rev.	Description	Approved by	Signature	Date
01.	First Issue	MARIO ANTONINO		28/03/1962
10.	Drawing and size list update for Trefoil cable cleats	MIROSLAV DAKOVIC		23/8/2024

NOTES:

P = Length of Cleats
Q = Height of Cleats
R = Width of Cleats
S = Centre of Hole to Centre of Hole
T = Size of Hole (For mounting Bolts)




Cat No.	Cable Dia.	P	Q	R	S	T
TNC 24*	22 - 24	-	-	-	-	-
TNC 30*	28 - 30	-	-	-	-	-
TNC 36	33 - 36	165	90	60	130	12
TNC 44	41 - 44	170	95	60	140	12
TNC 47	45 - 47	170	100	60	140	12
TNC 53	51 - 53	190	120	60	158	14
TNC 55	54 - 55	196	122	60	160	14
TNC 57*	56 - 57	-	-	-	-	-
TNC 65	64 - 65	220	130	70	180	14
TNC 67	66 - 67	220	140	70	180	14
TNC 70	68 - 70	220	140	70	180	14
TNC 77	74 - 77	240	150	70	200	14
TNC 81*	78 - 81	-	-	-	-	-
TNC 85*	82 - 85	-	-	-	-	-
TNC 93	91 - 93	280	165	80	246	14
TNC 96*	94 - 96	-	-	-	-	-
TNC 102*	100 - 102	-	-	-	-	-
TNC 105*	103 - 105	-	-	-	-	-
TNC 109*	106 - 109	-	-	-	-	-

DIMENSION TOLERANCE: $\pm 5.0\text{mm}$

*NON STOCK ITEM MINIMUM QUANTITIES APPLIES

NOTE : WE RESERVE THE RIGHTS IN THIS DOCUMENT AND IN THE INFORMATION CONTAINED THEREIN.
REPRODUCTION, USE OR DISCLOSURE TO THIRD PARTIES WITHOUT EXPRESS AUTHORITY IS STRICTLY FORBIDDEN.

All information are subject to changes without prior notice.
All dimensions are to be in mm. unless specified otherwise.

Item	Description	Pcs.	Catalogue No.	Material	Notes
<div style="display: flex; justify-content: space-between;"> <div> <p>Company Name:</p>  <p>DELTA SAMAJAYA Sdn Bhd (500279-01) No.226 & 238A, Jalan Perdana 6/18, Pandan Perdana, 55300 Kuala Lumpur. Tel: +603-9282 4007, +603-9281 3778 Fax: +603-9287 0705 E-mail: samajaya@delta.com.my Website: www.delta.com.my</p> </div> <div> <p>Name: Leif Olsson</p> <p>Signature: Stefan Zarrouati</p> <p>Approved by: Mario Antonino</p> </div> <div> <p>Substitute for : 09</p> <p>Catalogue number: TNC 24 TO 109</p> </div> </div>					
Title: Non-Metallic Cable Cleats			Revision: 10		

TREFOIL CABLE CLEATS BASE

TREFOIL CABLE CLEATS BASE

Item Code	Non-Metallic		Non-Ferrous Metal	
	Trefoil	Single	Trefoil	Single
DSSB-CC-TB2849 (M10)	TNC 27	SNC 2842	TAC 27	SAC 2838
	TNC 30	SNC 2935	TAC 30	SAC 3953
	TNC 33	SNC 4356	TAC 32	SAC 5468
	TNC 36	SNC 5476	TAC 33	SAC 6682
	TNC 40	SNC 7488	TAC 36	
	TNC 44		TAC 40	
	TNC 47		TAC 44	
	TNC 50		TAC 47	
	TNC 53		TAC 50	
DSSB-CC-TB5070 (M12)	TNC 55		TAC 53	
	TNC 60		TAC 55	
	TNC 65		TAC 60	
	TNC 67		TAC 65	
	TNC 70		TAC 70	
	TNC 73		TAC 73	
	TNC 77			
DSSB-CC-TB71112 (M12)	TNC 70	SNC 87102	TAC 85	SAC 6882
	TNC 73	SNC 103116	TAC 93	SAC 83103
	TNC 77	SNC 117138	TAC 99	SAC 100114
	TNC 93		TAC 112	SAC 125160
	TNC 99			
	TNC 112			



20 - 55



50 - 77



71 - 112

STAINLESS STEEL CABLE CLEATS

STAINLESS STEEL CABLE CLEATS - FOR TREFOIL CABLE

Item Code	Cable Outer Diameter Range (mm)	Height (mm)	Width (mm)	Fixing Hole (mm)
DSSB-CC-SST20	20-25	65	60	M8
DSSB-CC-SST26	26-32	75	74.9	M8
DSSB-CC-SST33	33-38	99	86.9	M8
DSSB-CC-SST38	38-44	108	102	M8
DSSB-CC-SST45	48-50	112	115	M8
DSSB-CC-SST51	51-55	128	117	M8
DSSB-CC-SST55	55-60	133	132	M10
DSSB-CC-SST60	60-65	145	150	M10
DSSB-CC-SST65	65-68	150	132	M10
DSSB-CC-SST69	69-74	165	175	M10

Specification:

- Material: Stainless Steel SS316 with folded sides.
- Smooth edges, eliminate the use of lining as it does not cut into cable outer sheath.



STAINLESS STEEL CABLE CLEATS - FOR SINGLE CABLE

Item Code	Cable Diameter	Fixing Hole
DSSB-CC-SSC20.0 - 23.0	20.0 - 23.0	M8
DSSB-CC-SSC23.1 - 26.1	23.1 - 26.1	M8
DSSB-CC-SSC26.2 - 29.2	26.2 - 29.2	M8
DSSB-CC-SSC29.3 - 32.2	29.3 - 32.2	M8
DSSB-CC-SSC32.4 - 35.4	32.4 - 35.4	M8
DSSB-CC-SSC35.5 - 38.5	35.5 - 38.5	M8
DSSB-CC-SSC38.6 - 41.6	38.6 - 41.6	M8
DSSB-CC-SSC41.7 - 44.7	41.7 - 44.7	M10
DSSB-CC-SSC44.8 - 47.8	44.8 - 47.8	M10
DSSB-CC-SSC47.9 - 50.9	47.9 - 50.9	M10
DSSB-CC-SSC51.0 - 54.0	51.0 - 54.0	M10
DSSB-CC-SSC54.1 - 57.1	54.1 - 57.1	M10
DSSB-CC-SSC57.2 - 60.2	57.2 - 60.2	M10
DSSB-CC-SSC60.3 - 63.3	60.3 - 63.3	M10
DSSB-CC-SSC63.4 - 66.4	63.4 - 66.4	M12
DSSB-CC-SSC69.5 - 72.5	69.5 - 72.5	M12
DSSB-CC-SSC72.6 - 75.6	72.6 - 75.6	M12
DSSB-CC-SSC75.7 - 78.8	75.7 - 78.8	M12

Specification:

- Material: Stainless Steel SS316 with folded sides.
- Smooth edges, eliminate the use of lining as it does not cut into cable outer sheath.



Example of Stainless Steel Cleats Installation



CABLE CLEAT PHOTO GALLERY



Redefining Supply
An ISO 9001:2015 &
14001:2015 Company

DELTA SAMA JAYA SDN. BHD. (DSSB) (Reg. No: 500276-W)

No. 23G & 23M, DSSB Building, Jalan Perdana 6/8, Pandan Perdana,
55300 Kuala Lumpur, Malaysia

Tel: +603-92824007, +603-92813778 Fax: +603-92870705

Email: (HQ): samajaya@substation.com.my, (Sales): sales@substation.com.my

Website: www.substation.com.my, www.cablecleat.com.my



LRT PROJECT





Redefining Supply
An ISO 9001:2015 &
14001:2015 Company

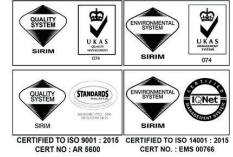
DELTA SAMA JAYA SDN. BHD. (DSSB) (Reg. No: 500276-W)

No. 23G & 23M, DSSB Building, Jalan Perdana 6/8, Pandan Perdana,
55300 Kuala Lumpur, Malaysia

Tel: +603-92824007, +603-92813778 Fax: +603-92870705

Email: (HQ): samajaya@substation.com.my, (Sales): sales@substation.com.my

Website: www.substation.com.my, www.cablecleat.com.my



LRT PROJECT





Redefining Supply
An ISO 9001:2015 &
14001:2015 Company

DELTA SAMA JAYA SDN. BHD. (DSSB) (Reg. No: 500276-W)

No. 23G & 23M, DSSB Building, Jalan Perdana 6/8, Pandan Perdana,
55300 Kuala Lumpur, Malaysia

Tel: +603-92824007, +603-92813778 Fax: +603-92870705

Email: (HQ): samajaya@substation.com.my, (Sales): sales@substation.com.my

Website: www.substation.com.my, www.cablecleat.com.my



MRT PROJECT





Redefining Supply
An ISO 9001:2015 &
14001:2015 Company

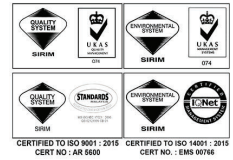
DELTA SAMA JAYA SDN. BHD. (DSSB) (Reg. No: 500276-W)

No. 23G & 23M, DSSB Building, Jalan Perdana 6/8, Pandan Perdana,
55300 Kuala Lumpur, Malaysia

Tel: +603-92824007, +603-92813778 Fax: +603-92870705

Email: (HQ): samajaya@substation.com.my, (Sales): sales@substation.com.my

Website: www.substation.com.my, www.cablecleat.com.my



MRT PROJECT



INSTALLATION REFERENCE LIST

**SUBSTATIONS
POWER PLANTS
DATA CENTER
RAILWAYS
HIGHRISE BUILDINGS
AIRPORTS, etc.**

Reference List:

A) CABLE CLEATS supplied to Electrical Substation last 15 years.

- 1 Olak Lempit 500 kV Substation.
- 2 Proton 132 kV Substation.
- 3 Batu Tiga 132 kV Substation.
- 4 Lembah Beringin 275/132/33/11 kV Substation.
- 5 Kota Damansara 132/33/11 kV Substation.
- 6 Pengkalan Industry 132/33/11 kV Substation.
- 7 Silibin 132 kV Substation.
- 8 Abu Bakar Baginda 132 kV Substation.
- 9 Vision City 132 kV Substation.
- 10 Bandar Baru Salak Tinggi 132kV Substation.
- 11 Seremban 2 132/33/11 kV Substation.
- 12 Chubadak 132/33/11 kV Substation.
- 13 Salak Tinggi 275/132/33/11 kV Substation.
- 14 Telok Panglima Garang 132/33/11 kV Substation.
- 15 Gurun 275/132 kV Substation.
- 16 Pengkalan 132/33/11 kV Substation.
- 17 Cheng 132/33/11 kV Substation.
- 18 Kulai 132/33/11 kV Substation.
- 19 Mid-Valley 33/11 kV Substation.
- 20 West Port 33/11 kV Substation.
- 21 Pandamaran 132/33/11 kV Substation.
- 22 Kubang Krian 33 and 11 kV Substation.
- 23 Puchong Jaya 33 and 11 kV Substation.
- 24 TNBD(HQ) 275/132/33/11 kV Substation.
- 25 Ampang 275/132/33/11 kV Substation.
- 26 Tuanku Jaafar Power Station.
- 27 Port Dickson Power Plants 275 kV Substation.
- 28 Bukit Tarek 500 kV Substation.
- 29 Tanjung Bin 500 kV Substation.
- 30 Bukit Batu 500 kV Substation.
- 31 Nuni 275 kV Substation.
- 32 Bandar Shah Alam 132 kV Substation.
- 33 Serdang 275/132 kV Substation.
- 34 National University 132kV Substation.
- 35 Lenggeng 500kV Substation.
- 36 Selangau 275/132kV Substation, Sarawak.
- 37 Petian 132kV Substation, Sarawak.
- 38 Mukah 132kV Substation, Sarawak.
- 39 Tanjung Langsat 132kV Substation, Johor.
- 40 Puchong Perdana Substation.



DELTA SAMA JAYA SDN. BHD. (DSSB) (Reg. No: 500276-W)

No. 23G & 23M, DSSB Building, Jalan Perdana 6/8, Pandan Perdana,
55300 Kuala Lumpur, Malaysia
Tel: +603-92824007, +603-92813778 Fax: +603-92870705
Email: (HQ): samajaya@substation.com.my, (Sales): sales@substation.com.my
Website: www.substation.com.my, www.cablecleat.com.my
GST Registration No: 001134116864



Reference List:

A) CABLE CLEATS supplied to Electrical Substation last 15 years.

- 41 Bandar Tun Razak 132kV GIS Substation.
- 42 Manjalara 132kV GIS Substation.
- 43 Olak Lampit 275kV Substation.
- 44 Pavillion 132kV GIS Substation.
- 45 Taman Segar 33kV Substation, Cheras.
- 46 Shah Alam East 275kV Substation

Note : We have also been supplying to other companies which we do not have any records of their sites.

B) CABLE CLEATS supplied to Data Center.

- 1 Cyberjaya Project Eagles Bridge Data Center MY02
- 2 Sedenak Kulai Project Butterfly Bridge Data Center MY06
- 3 Data Bridge Center Phase 3, Kulai
- 4 Projek K2, Sedenak
- 5 Air Trunk, Gelang Patah
- 6 Yondr Data Center, Sedenak

Reference List:

C) CABLE CLEATS supplied to Private Industry (Local)

- 1 Mid-Valley Garden 33/11 kV Substation.
- 2 Mid-Valley Tower 33/11 kV Substation.
- 3 Sunpower Project, Melaka.
- 4 Q-Cell Project, Cyberjaya.
- 5 MIE Project, East Malaysia
- 6 BBCC (Bukit Bintang City Center), KL
- 7 Rapid Project, Pengerang

D) CABLE CLEATS supplied to Private Industry (Overseas)

- 1 AUSSA Power Products PTY Ltd., Australia.
- 2 Hidden Valley 132kV Substation, Papua New Guinea.
- 3 Erap 132kV Substation, Papua New Guinea.
- 4 BMC/DES 66kV Substation, Brunei.
- 5 Melut Basin Oil Development Project, Sudan.
- 6 Adhi Gas Processing Plant II Project, Pakistan.
- 7 Dubai Electricity & Water Authority, Contract No. CE/139C/2002
- Supply of 11kV Switchboards and Ancillary Equipment.
- 8 Andex Pte. Ltd., Singapore.
- 9 Peci-Thai Co. Ltd., Thailand.
- 10 220/33kV Substation, 500mld Seawater Desalination Plant, Magtaa, Algeria.
- 11 Male, Republic of Maldives, (for Marine cable, fixed at Sea Bed)
- 12 Kampala, Uganda, Africa
- 13 Bangkok, Thailand - Metropolitan Electricity Authority (MEA), Thailand.
- 14 Manila, Philippines - ZRP Builder, Manila.
- 15 Kila-Kila 66/11kV Substation, Papua New Guinea.
- 16 Eton Gentriss GIS Project, Manila Philippines.
- 17 Colombo, Sri Lanka.
- 18 Bandar Seri Begawan, Brunei.
- 19 Batam, Indonesia.
- 20 Merakio, Philippines.

Reference List:

E) CABLE CLEATS supplied to Metro Rails

- 1 LRT Ampang Line
- 2 LRT Kelana Jaya Line 2
- 3 LRT Putra Height Depot
- 4 MRT Sungai Buloh Depot
- 5 MRT Kajang Depot
- 6 MRT1 - Tun Razak Exchange Station
- 7 MRT Line 2 - Sungai Buloh to Putrajaya
- 8 MRT 2 - Jinjang BSS (Bulk Supply Station)
- 9 MRT 2 - Jalan Kuchai Lama BSS
- 10 MRT 2 - UPM BSS
- 11 MRT 1 - Taman Midah Station
- 12 LRT 3 - Glenmarie 2 BSS (Bulk Supply Station)
- 13 LRT 3 - Shah Alam BSS
- 14 LRT 3 - Johan Setia Depot
- 15 LRT 3 - TPSS 26 (Track Power Substation 26)
- 16 LRT 3 - Ventilation Shaft Station

F) CABLE CLEATS supplied to Inter-City Rails

- 1 KTMB - Ipoh - Padang Besar Rail (Electrified Double Tracking Project).
- 2 KTMB - Rawang 132kV Substation.
- 3 KTMB - Slim River 132kV Substation.
- 4 KTMB - Rembau 132kV Substation.
- 5 KTMB - Gemas 132kV Substation.
- 6 KTMB - Seremban - Gemas Rail (Electrified Double Tracking Project).
- 7 KTMB - Gemas - Johor Bahru (Electrified Double Tracking Project).
- 8 KTMB - Rawang to Seremban Rail (Electrified Double Tracking Project).
- 9 KTMB - Batu Gajah Depot (Electrified Double Tracking Project).
- 10 KTMB - Segamat 132kV Substation.
- 11 KTMB - Bekok 132kV Substation (Feeder Station).
- 12 KTMB - Renggam 132kV Substation (Feeder Station).
- 13 KTMB - Senai 132kV Substation (Feeder Station).
- 14 KTMB - Gemas (Mid Point Track Section Location (MPTSL)).
- 15 KTMB - Genuang (Mid Point Track Section Location (MPTSL)).
- 16 KTMB - Paloh (Mid Point Track Section Location (MPTSL)).
- 17 KTMB - Layang-Layang (Mid Point Track Section Location (MPTSL)).
- 18 KTMB - Johor Bahru (Tie Circuit Breaker Location (TCBL))
- 19 KTMB - Lahat 132kV Substation.
- 20 KTMB - Sungkai 132kV Substation.
- 21 KTMB - Kalumpang 132kV Substation.



Redefining Supply
An ISO 9001:2015 &
14001:2015 Company

DELTA SAMA JAYA SDN. BHD. (DSSB) 199901025376 (500276-W)

No. 23G & 23M, DSSB Building, Jalan Perdana 6/8, Pandan Perdana,
55300 Kuala Lumpur, Malaysia
Tel: +603-92824007, +603-92813778 Fax: +603-92870705
Email: (HQ): samajaya@substation.com.my, (Sales): sales@substation.com.my
Website: www.substation.com.my



CABLE CLEATS & CABLE SLABS

DATE : 15/01/2018

RoHS COMPLIANCE STATEMENT

EU-directive one substance restrictions (RoHS-Directive 2011/65/EU)

RoHS Directive 2011/65/EU has the restriction of the use of certain hazardous substances as their aim.

To this end, maximum values were specified for these substances.

The substances affected are:

- Lead, mercury, hexavalent chromium, polybrominated biphenyl (PBB),
polybrominated diphenyl ether (PBCE) – a maximum of 0.1% by weight is permissible for these
substances
- Cadmium- a maximum of 0.01% by weight is permissible for this substance

We confirm that our products in Cable Cleats & High-Quality Plastic Slabs are manufactured according
to the actual version of RoHS-Directive 2011/65/EU.

Delta Sama Jaya Sdn.Bhd.



We are constantly reviewing and updating our products,
for the latest information please call us on (+603) 9281 3778
or visit our website at: www.substation.com.my