



**DELTA SAMA JAYA**  
www.substation.com.my



# DELTA SAMA JAYA SDN. BHD. (DSSB)

(Company No. 500276-W)

(Registered with Ministry of Finance, Tenaga Nasional Berhad (TNB), CIDB, KTMB, Telekom (TM), etc.)

## RAILWAY ACCESSORIES



No. 23G & 23M, DSSB Building, Jalan Perdana 6/8, Pandan Perdana,  
55300 Kuala Lumpur, Malaysia  
Tel: +603- 9282 4007, 03- 9281 3778 ; Fax: +603- 9287 0705

**Website: [www.substation.com.my](http://www.substation.com.my)**

and

**Website: [www.rail.com.my](http://www.rail.com.my)**

E-mail: [samajaya@substation.com.my](mailto:samajaya@substation.com.my) (General)  
E-mail: [accounts@substation.com.my](mailto:accounts@substation.com.my) , [sales@substation.com.my](mailto:sales@substation.com.my) (Sales)

# **RAIL SAFETY EQUIPMENT**



Redefining Supply  
An ISO 9001:2015 &  
14001:2015 Company

# DELTA SAMA JAYA SDN. BHD. (DSSB) (Reg. No: 500276-W)

No. 23G & 23M, DSSB Building, Jalan Perdana 6/8, Pandan Perdana,  
55300 Kuala Lumpur, Malaysia

Tel: +603-92824007, +603-92813778 Fax: +603-92870705

Email: (HQ): samajaya@substation.com.my, (Sales): sales@substation.com.my

Website: www.substation.com.my, www.cablecleat.com.my



## Rail Safety Equipment

### Interlocked H.V. Overhead Traction Line

#### Portable Earthing Equipment

Item Code
DSSB-RAIL-PEE-IOTL(M)

#### Design Features:

- Rugged Construction
- Suitable for Fitting to All Common Types of Running and Conductor Rails
- Excellent Corrosion Resistance
- 20 'key' Combination
- Suitable for Corroded Rails, Steel Framework or Earthing Points
- Tamper Proof
- Approval Ref. PA05/00944



Line End Clamp

#### Description:

This equipment is for providing temporary earth bonds between overhead catenary or contact conductors and earthed rail sections or recognized earthing points. The equipment has been specially enhanced in order to address the potentially fatal procedure of removing the equipment in the correct order from service. To ensure that the line is removed prior to the earth potential clamp it incorporates a special key which must be used to remove the Earth End Clamp.

The tamperproof lock arrangement is an integral part of both clamps and up to 20 combinations are provided, to deter 'master keys' being used to fool the system.



Earth End Clamp

#### Ordering Particulars:

##### Earth End Clamp

Short Circuit Rating 34kA / 1 sec

##### Line End Clamp

Conductor Range ; 3mm to 27 mm diameter

Short Circuit Rating 17.5 kA / 2 secs

##### Interconnecting Leads

Length to suit application

Short Circuit Rating; 8 kA / 1 sec

##### Insulated Poles

4' Lower Section

4' Intermediate Section

4' Top Section

##### Operating Socket

British Rail Code; 91/00852

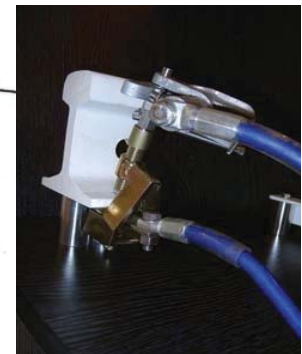
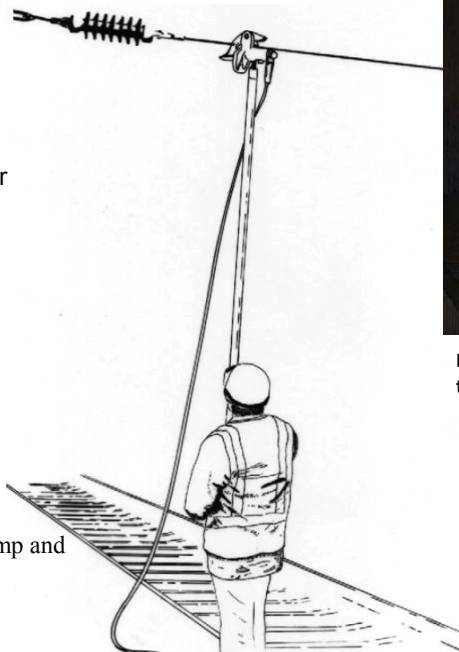
##### Interlocked Clamp Kit

Compromising Line End Clamp, Earth End Clamp and Interconnecting Lead

Railtrack Approval Certificate No. PA05/00944

##### PVC Carrying Bag

Suitable for carrying above equipment



Interlocked clamps being applied to Flat bottom Rail Section



*Redefining Supply*  
An ISO 9001:2015 &  
14001:2015 Company

# DELTA SAMA JAYA SDN. BHD. (DSSB) (Reg. No: 500276-W)

No. 23G & 23M, DSSB Building, Jalan Perdana 6/8, Pandan Perdana,  
55300 Kuala Lumpur, Malaysia

Tel: +603-92824007, +603-92813778 Fax: +603-92870705

Email: (HQ): samajaya@substation.com.my, (Sales): sales@substation.com.my

Website: [www.substation.com.my](http://www.substation.com.my), [www.cablecleat.com.my](http://www.cablecleat.com.my)



## FOR RAILWAY

### Railway Equipment Shorting Strap

<b>Item Code</b>
DSSB-RAIL-PEE-RESS(M)

#### Design Features:

- Rugged Construction
- Suitable for Fitting to All Common Types of Running and Conductor Rails
- Excellent Corrosion Resistance
- Weight 5.5kg (12 lb.202)
- Suitable for Corroded Rails
- Supplied with Protective Carrying Bag



### J117-NSE Clamp

<b>Item Code</b>
DSSB-RAIL-PEE-J117-NSE(M)

#### Design Features:

- Rugged Construction
- Suitable for 'Flat-Bottomed' and 'Bull-Head' Rail Applications
- Excellent Corrosion Resistance, suitable for corroded rails
- Weight 1kg
- Short Circuit Rating 34 kA/1sec
- Fitted with springs to ensure secure location.







Redefining Supply  
An ISO 9001:2015 &  
14001:2015 Company

# DELTA SAMA JAYA SDN. BHD. (DSSB) (Reg. No: 500276-W)

No. 23G & 23M, DSSB Building, Jalan Perdana 6/8, Pandan Perdana,  
55300 Kuala Lumpur, Malaysia

Tel: +603-92824007, +603-92813778 Fax: +603-92870705

Email: (HQ): samajaya@substation.com.my, (Sales): sales@substation.com.my

Website: www.substation.com.my, www.cablecleat.com.my



## FOR RAILWAY

### Signal Sighting Target

<b>Item Code</b>
DSSB-RAIL-PEE-SST(M)

#### **Description:**

Inspect equipment prior to use for any signs or fractured or damaged pole sections, taking special note of the primary insulator pole for damage to the silicone coating and joint end fittings.



### C31 Live Line Indicator

<b>Item Code</b>
DSSB-RAIL-PEE-C31/LLI(M)

#### **Description:**

This Equipment is designed for use upon overhead a.c rail electrification systems operating at 25kV nominal voltage to indicate the presence of extra high voltages to aid safe working practices.



**RAIL  
EARTH**



# DELTA SAMA JAYA SDN. BHD. (DSSB) (Reg. No: 500276-W)

No. 23G & 23M, DSSB Building, Jalan Perdana 6/8, Pandan Perdana, 55300 Kuala Lumpur, Malaysia

Tel: +603-92824007, +603-92813778 Fax: +603-92870705

Email: (HQ): samajaya@substation.com.my, (Sales): sales@substation.com.my

Website: www.substation.com.my, www.cablecleat.com.my



Redefining Supply  
An ISO 9001:2015 & 14001:2015 Company

## Short Rail Earth

Item Code
DSSB-RAIL-PEE-SRE

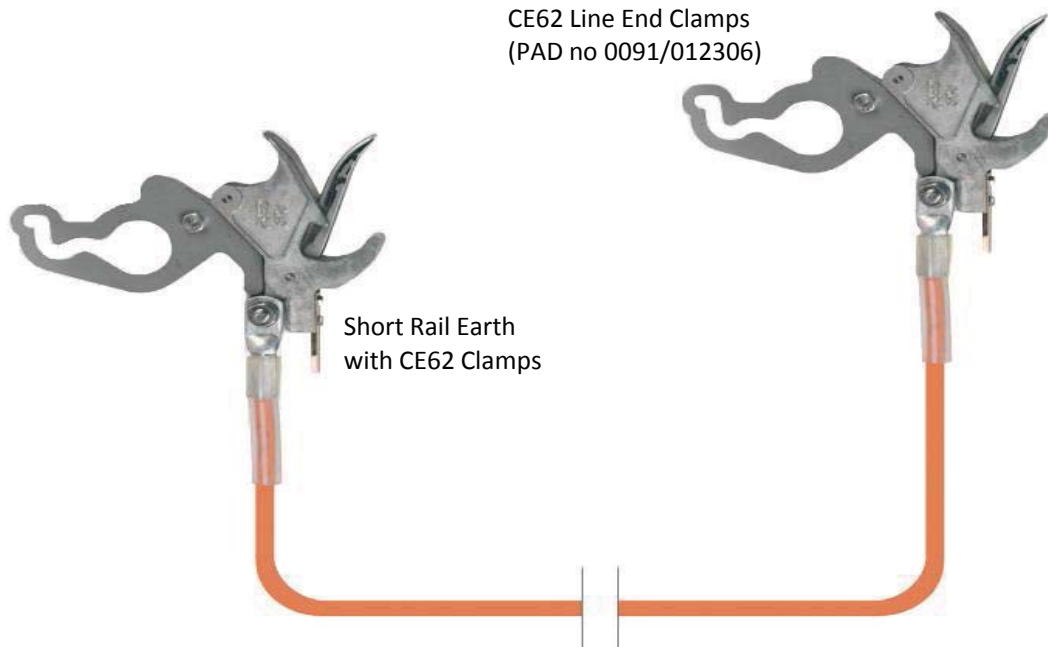
The short rail earth (DEP) attaches a 1.5m orange aluflex earth lead from the earth cantilever to a steel mast spigot at a designated earth point. The kit can consist of CE62 and isolation earth leads.

Flexible aluminium earth leads with fully tested and fault-rated compression terminations and support sleeves are used for interconnecting conductor clamps to various earth points. The standard nominal cross section is of 50sq.mm.

Operating poles sets are also available for application of the earthing leads or cramps.



CE62 Line End Clamps (PAD no 0091/012306)





*Redefining Supply*  
An ISO 9001:2015 &  
14001:2015 Company

# DELTA SAMA JAYA SDN. BHD. (DSSB) (Reg. No: 500276-W)

No. 23G & 23M, DSSB Building, Jalan Perdana 6/8, Pandan Perdana,  
55300 Kuala Lumpur, Malaysia

Tel: +603-92824007, +603-92813778 Fax: +603-92870705

Email: (HQ): samajaya@substation.com.my, (Sales): sales@substation.com.my

Website: www.substation.com.my, www.cablecleat.com.my



## Earth Discharge Rod

<b>Item Code</b>
DSSB-RAIL-PEE-REEDR(M)



### **Description:**

The Earth Discharge Rods are used for the removal of electrostatic charge from disconnected circuits, prior to undertaking maintenance work.



## Tree Pruning Equipment

<b>Item Code</b>
DSSB-RAIL-PEE-RETPE(M)

### **Product Benefits:**

- Rugged construction
- Suitable for fitting to standard Operating Pole Sections
- Pruning head weight 1.375kg
- Pruning saw weight 480g
- Saw blade cuts in both directions







Redefining Supply  
An ISO 9001:2015 &  
14001:2015 Company

# DELTA SAMA JAYA SDN. BHD. (DSSB) (Reg. No: 500276-W)

No. 23G & 23M, DSSB Building, Jalan Perdana 6/8, Pandan Perdana,  
55300 Kuala Lumpur, Malaysia

Tel: +603-92824007, +603-92813778 Fax: +603-92870705

Email: (HQ): samajaya@substation.com.my, (Sales): sales@substation.com.my

Website: www.substation.com.my, www.cablecleat.com.my



## Earth Discharge Rod

Item Code
DSSB-RAIL-PEE-D3/LLI

### Product Selection

The D3/LLI Live Line Indicator is a resistive type voltage detector designed for use on overhead a.c. rail electrification systems operating at 25kV nominal voltage. The 'LLI' threshold is specified as  $12kV \pm 5\%$ , however it should be noted that induced voltages could reach 10kV.

The unit is designed to be mounted on approved fibreglass earth poles with the pole immediately below the indicator being the primary insulator (ref 91-2410). The signal emitted by the D3/LLI is both audible and visible. Power is provided by a rechargeable battery, housed within the main unit. The battery can be charged in situ using the charger supplied.

The unit comprises a main unit and a contact probe. The contact probe is manufactured from lightweight fibreglass tubing and houses the calibrated resistor stack. The pole section is foam-filled to increase its voltage withstand. The probe is connected to the overhead line by a replaceable aluminum hook. The top of the pole is coated in a special high reflectivity paint to ease visibility when applying the indicator in poor lighting conditions.

The limit of contact with the overhead line is clearly defined by a red limit collar fixed to the pole. The contact probe screws into the main unit with a special screw connector to minimise flash-over.

### Product Benefits

- Approval Reference PA05/798
- Audible and visual warning
- Self-test function
- Fully interchangeable
- Insulation tested
- Compatible with primary insulator poles





Redefining Supply  
An ISO 9001:2015 &  
14001:2015 Company

# DELTA SAMA JAYA SDN. BHD. (DSSB) (Reg. No: 500276-W)

No. 23G & 23M, DSSB Building, Jalan Perdana 6/8, Pandan Perdana,  
55300 Kuala Lumpur, Malaysia  
Tel: +603-92824007, +603-92813778 Fax: +603-92870705  
Email: (HQ): samajaya@substation.com.my, (Sales): sales@substation.com.my  
Website: www.substation.com.my, www.cablecleat.com.my



## Difference Type Of Application For Short Rail Earth



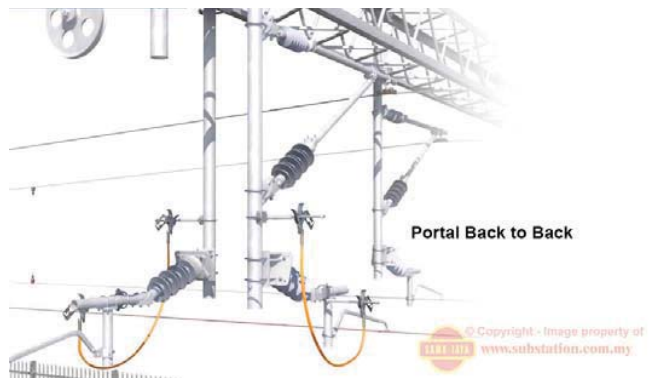
Auto Transformer Feeder using Single Short Rail Earth (SSRE)



Cantilever Section using Double Short Rail Earth



Headspan using Single Short Rail Earth



Portal Back to Back using Single Short Rail Earth



Return Conductor using Double Short Rail Earth



*Redefining Supply*  
 An ISO 9001:2015 &  
 14001:2015 Company

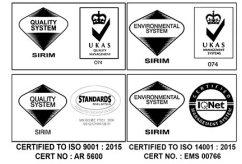
# DELTA SAMA JAYA SDN. BHD. (DSSB) (Reg. No: 500276-W)

No. 23G & 23M, DSSB Building, Jalan Perdana 6/8, Pandan Perdana,  
 55300 Kuala Lumpur, Malaysia

Tel: +603-92824007, +603-92813778 Fax: +603-92870705

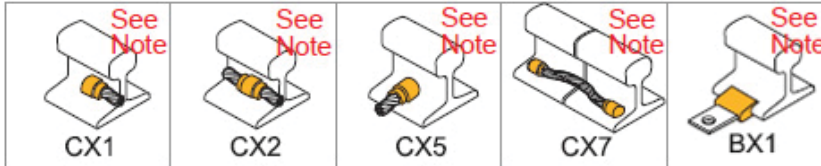
Email: (HQ): samajaya@substation.com.my, (Sales): sales@substation.com.my

Website: www.substation.com.my, www.cablecleat.com.my



## Railway Exothermic Welding

### Railway Application



CGR = Cable to Grounding Receptacle  
 CGRG = Cable & Grounding Receptacle to Ground Rod







*Redefining Supply*  
 An ISO 9001:2015 &  
 14001:2015 Company

# DELTA SAMA JAYA SDN. BHD. (DSSB) (Reg. No: 500276-W)

No. 23G & 23M, DSSB Building, Jalan Perdana 6/8, Pandan Perdana,  
 55300 Kuala Lumpur, Malaysia

Tel: +603-92824007, +603-92813778 Fax: +603-92870705

Email: (HQ): samajaya@substation.com.my, (Sales): sales@substation.com.my

Website: www.substation.com.my, www.cablecleat.com.my



## Earthing System - MRT







*Redefining Supply*  
 An ISO 9001:2015 &  
 14001:2015 Company

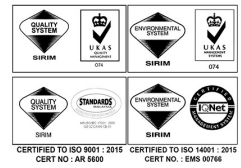
# DELTA SAMA JAYA SDN. BHD. (DSSB) (Reg. No: 500276-W)

No. 23G & 23M, DSSB Building, Jalan Perdana 6/8, Pandan Perdana,  
 55300 Kuala Lumpur, Malaysia

Tel: +603-92824007, +603-92813778 Fax: +603-92870705

Email: (HQ): samajaya@substation.com.my, (Sales): sales@substation.com.my

Website: [www.substation.com.my](http://www.substation.com.my), [www.cablecleat.com.my](http://www.cablecleat.com.my)





*Redefining Supply*  
 An ISO 9001:2015 &  
 14001:2015 Company

# DELTA SAMA JAYA SDN. BHD. (DSSB) (Reg. No: 500276-W)

No. 23G & 23M, DSSB Building, Jalan Perdana 6/8, Pandan Perdana,  
 55300 Kuala Lumpur, Malaysia

Tel: +603-92824007, +603-92813778 Fax: +603-92870705

Email: (HQ): samajaya@substation.com.my, (Sales): sales@substation.com.my

Website: www.substation.com.my, www.cablecleat.com.my



## Rail Earthing System - MRT







# DELTA SAMA JAYA SDN. BHD. (DSSB) (Reg. No: 500276-W)

No. 23G & 23M, DSSB Building, Jalan Perdana 6/8, Pandan Perdana, 55300 Kuala Lumpur, Malaysia

Tel: +603-92824007, +603-92813778 Fax: +603-92870705

Email: (HQ): samajaya@substation.com.my, (Sales): sales@substation.com.my

Website: [www.substation.com.my](http://www.substation.com.my), [www.cablecleat.com.my](http://www.cablecleat.com.my)

*Redefining Supply*  
An ISO 9001:2015 & 14001:2015 Company





# DELTA SAMA JAYA SDN. BHD. (DSSB) (Reg. No: 500276-W)

No. 23G & 23M, DSSB Building, Jalan Perdana 6/8, Pandan Perdana,  
55300 Kuala Lumpur, Malaysia

Tel: +603-92824007, +603-92813778 Fax: +603-92870705

Email: (HQ): samajaya@substation.com.my, (Sales): sales@substation.com.my

Website: [www.substation.com.my](http://www.substation.com.my), [www.cablecleat.com.my](http://www.cablecleat.com.my)

*Redefining Supply*  
An ISO 9001:2015 &  
14001:2015 Company







# DELTA SAMA JAYA SDN. BHD. (DSSB) (Reg. No: 500276-W)

No. 23G & 23M, DSSB Building, Jalan Perdana 6/8, Pandan Perdana,  
55300 Kuala Lumpur, Malaysia

Tel: +603-92824007, +603-92813778 Fax: +603-92870705

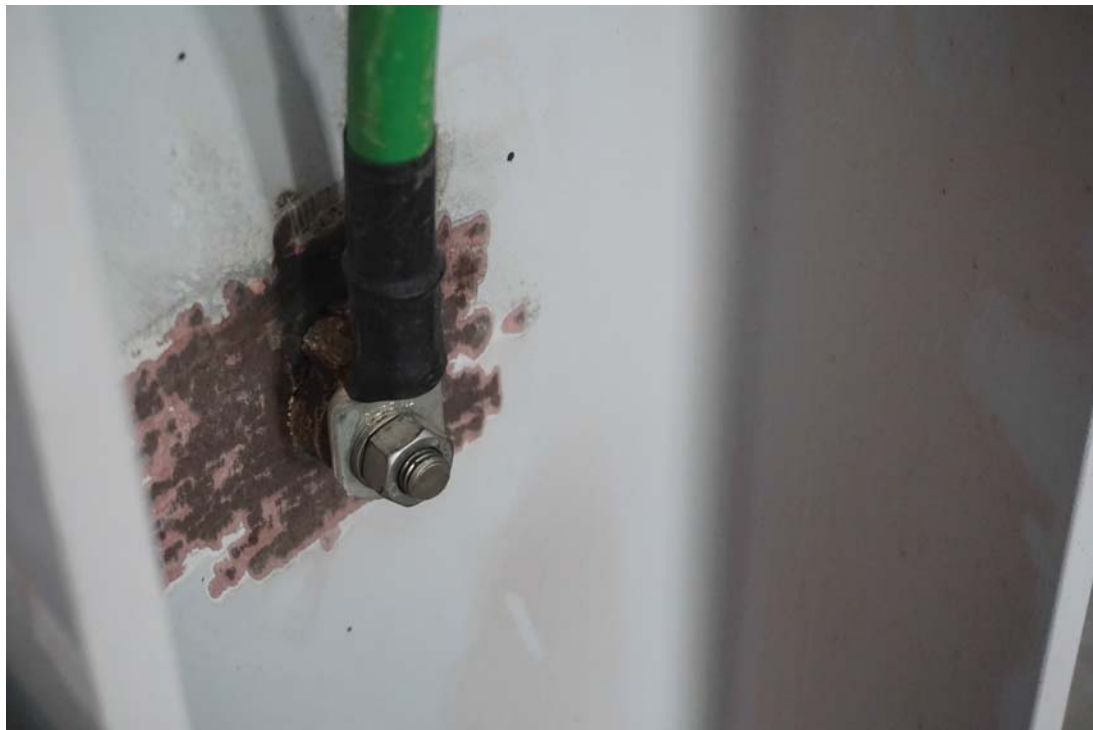
Email: (HQ): samajaya@substation.com.my, (Sales): sales@substation.com.my

Website: www.substation.com.my, www.cablecleat.com.my

*Redefining Supply*  
An ISO 9001:2015 &  
14001:2015 Company



## Rail Earthing System - LRT





# DELTA SAMA JAYA SDN. BHD. (DSSB) (Reg. No: 500276-W)

No. 23G & 23M, DSSB Building, Jalan Perdana 6/8, Pandan Perdana,  
55300 Kuala Lumpur, Malaysia

Tel: +603-92824007, +603-92813778 Fax: +603-92870705

Email: (HQ): samajaya@substation.com.my, (Sales): sales@substation.com.my

Website: [www.substation.com.my](http://www.substation.com.my), [www.cablecleat.com.my](http://www.cablecleat.com.my)



*Redefining Supply*  
An ISO 9001:2015 &  
14001:2015 Company



**RAIL CABLE  
LAYING  
ACCESSORIES**



Redefining Supply  
An ISO 9001:2015 &  
14001:2015 Company

# DELTA SAMA JAYA SDN. BHD. (DSSB) (Reg. No: 500276-W)

No. 23G & 23M, DSSB Building, Jalan Perdana 6/8, Pandan Perdana,  
55300 Kuala Lumpur, Malaysia

Tel: +603-92824007, +603-92813778 Fax: +603-92870705

Email: (HQ): samajaya@substation.com.my, (Sales): sales@substation.com.my

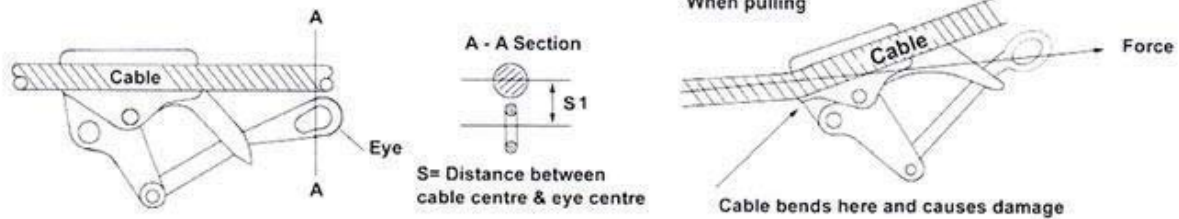
Website: www.substation.com.my, www.cablecleat.com.my



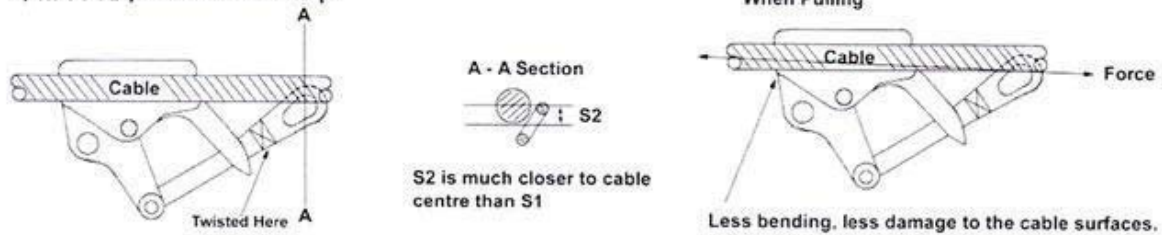
## RAILWAY GRIP

### TWIST-GRIP FEATURE

#### 1) Normal grip on the market



#### 2) HI-TOOL patented Twist Grip



RAILWAY GRIP 2 TON



Capacity	20 kN(2TON)
Min Cable	5 mm
Max. Cable	22 mm
Jaw Length	90 mm

Item Code
DSSB-ABC-TROLLEY-20



Capacity	20 kN(2TON)
Min Cable	5 mm
Max. Cable	28 mm
Jaw Length	120 mm

Item Code
DSSB-ABC-FEEDER-MT20





Redefining Supply  
An ISO 9001:2015 &  
14001:2015 Company

# DELTA SAMA JAYA SDN. BHD. (DSSB) (Reg. No: 500276-W)

No. 23G & 23M, DSSB Building, Jalan Perdana 6/8, Pandan Perdana,  
55300 Kuala Lumpur, Malaysia  
Tel: +603-92824007, +603-92813778 Fax: +603-92870705  
Email: (HQ): samajaya@substation.com.my, (Sales): sales@substation.com.my  
Website: www.substation.com.my, www.cablecleat.com.my



RAILWAY GRIP 3 TON



Capacity 30 kN(3TON)  
Min Cable 5 mm  
Max. Cable 22 mm  
Jaw Length 90 mm

Item Code
DSSB-ABC-TROLLEY-30



Capacity 30 kN(3TON)  
Min Cable 17 mm  
Max. Cable 35 mm  
Jaw Length 120 mm

Item Code
DSSB-ABC-FEEDER-LG30



Capacity 60 kN(6TON)  
Min Cable 8 mm  
Max. Cable 28 mm  
Jaw Length 140 mm

Item Code
DSSB-ABC-TROLLEY-60

RAILWAY GRIP 6 TON



Capacity 50 kN(6TON)  
Min Cable 18 mm  
Max. Cable 28 mm  
Jaw Length 180 mm

Item Code
DSSB-ABC-AL-50KN



Capacity 60 kN(6TON)  
Min Cable 28 mm  
Max. Cable 46 mm  
Jaw Length 220 mm

Item Code
DSSB-ABC-AL-60KN



# DELTA SAMA JAYA SDN. BHD. (DSSB) (Reg. No: 500276-W)

No. 23G & 23M, DSSB Building, Jalan Perdana 6/8, Pandan Perdana,  
55300 Kuala Lumpur, Malaysia

Tel: +603-92824007, +603-92813778 Fax: +603-92870705

Email: (HQ): samajaya@substation.com.my, (Sales): sales@substation.com.my

Website: [www.substation.com.my](http://www.substation.com.my), [www.cablecleat.com.my](http://www.cablecleat.com.my)



*Redefining Supply*  
An ISO 9001:2015 &  
14001:2015 Company

# RAIL CABLE CLEATS/ CLAMPS





Redefining Supply  
An ISO 9001:2015 &  
14001:2015 Company

# DELTA SAMA JAYA SDN. BHD. (DSSB) (Reg. No: 500276-W)

No. 23G & 23M, DSSB Building, Jalan Perdana 6/8, Pandan Perdana,  
55300 Kuala Lumpur, Malaysia

Tel: +603-92824007, +603-92813778 Fax: +603-92870705

Email: (HQ): samajaya@substation.com.my, (Sales): sales@substation.com.my

Website: [www.substation.com.my](http://www.substation.com.my), [www.cablecleat.com.my](http://www.cablecleat.com.my)



## ALUMINIUM ALLOY CABLE CLEATS - SINGLE POWER CABLE

Item Code	Cable Dia. (mm)
DSSB-CC-SAC18-27	18-27
DSSB-CC-SAC28-38	28-38
DSSB-CC-SAC39-53	39-53
DSSB-CC-SAC54-68	54-68
DSSB-CC-SAC66-82	66-82
DSSB-CC-SAC83-103	83-103
DSSB-CC-SAC100-114	100-114
DSSB-CC-SAC115-138	115-138



IEC 61914:2009  
BS EN 50368 : 2003

## TWO HOLE PLASTIC CABLE CLEATS - SINGLE POWER CABLE (FOR INDOOR USE)

Item Code	Material	Cable Dia. (mm)
DSSB-CC-SNC18-27	FR	18-27
DSSB-CC-SNC28-42	FR	28-42
DSSB-CC-SNC43-56	FR	43-56
DSSB-CC-SNC54-76	FR	54-76
DSSB-CC-SNC74-88	FR	74-88
DSSB-CC-SNC87-102	FR	87-102
DSSB-CC-SNC103-116	FR	103-116
DSSB-CC-SNC117-138	FR	117-138

\* FR = Fibreglass Reinforced



IEC 61914:2009  
BS EN 50368 : 2003





Redefining Supply  
An ISO 9001:2015 &  
14001:2015 Company

# DELTA SAMA JAYA SDN. BHD. (DSSB) (Reg. No: 500276-W)

No. 23G & 23M, DSSB Building, Jalan Perdana 6/8, Pandan Perdana,  
55300 Kuala Lumpur, Malaysia

Tel: +603-92824007, +603-92813778 Fax: +603-92870705

Email: (HQ): samajaya@substation.com.my, (Sales): sales@substation.com.my

Website: [www.substation.com.my](http://www.substation.com.my), [www.cablecleat.com.my](http://www.cablecleat.com.my)



## TWO HOLE PLASTIC CABLE CLEATS (UV RESISTANT) - SINGLE POWER CABLE (FOR OUTDOOR USE)

Item Code	Outdoor	M	Cable Dia. (mm)
DSSB-CC-SNC18-27	UV	FR	18-27
DSSB-CC-SNC28-42	UV	FR	28-42
DSSB-CC-SNC43-56	UV	FR	43-56
DSSB-CC-SNC54-76	UV	FR	54-76
DSSB-CC-SNC74-88	UV	FR	74-88
DSSB-CC-SNC87-102	UV	FR	87-102
DSSB-CC-SNC103-116	UV	FR	103-116
DSSB-CC-SNC117-138	UV	FR	117-138



\* FR = Fibreglass Reinforced

\* M = Material

## TREFOIL TWO HOLE CABLE CLEATS FOR THREE CABLE (ALUMINIUM)

Item Code	Cable Dia. (mm)
DSSB-CC-TAC32	29-32
DSSB-CC-TAC36	33-36
DSSB-CC-TAC40	37-40
DSSB-CC-TAC44	41-44
DSSB-CC-TAC47	45-47
DSSB-CC-TAC50	48-50
DSSB-CC-TAC53	51-53
DSSB-CC-TAC55	54-55
DSSB-CC-TAC60	56-60
DSSB-CC-TAC63	61-63
DSSB-CC-TAC66	64-66
DSSB-CC-TAC70	67-70
DSSB-CC-TAC73	71-73
DSSB-CC-TAC77	74-77
DSSB-CC-TAC 81	78-81
DSSB-CC-TAC85	82-85
DSSB-CC-TAC 90	86-90
DSSB-CC-TAC93	91-93
DSSB-CC-TAC96	94-93
DSSB-CC-TAC99	97-99
DSSB-CC-TAC102	100-102
DSSB-CC-TAC105	103-105
DSSB-CC-TAC109	106-109
DSSB-CC-TAC112	110-112



Other size please send / call for enquiry



IEC 61914:2009

BS EN 50368 : 2003





Redefining Supply  
An ISO 9001:2015 &  
14001:2015 Company

# DELTA SAMA JAYA SDN. BHD. (DSSB) (Reg. No: 500276-W)

No. 23G & 23M, DSSB Building, Jalan Perdana 6/8, Pandan Perdana,  
55300 Kuala Lumpur, Malaysia

Tel: +603-92824007, +603-92813778 Fax: +603-92870705

Email: (HQ): samajaya@substation.com.my, (Sales): sales@substation.com.my

Website: www.substation.com.my, www.cablecleat.com.my



## TREFOIL TWO HOLE PLASTIC CABLE CLEATS -FOR THREE CABLE (FOR INDOOR USE)

Item Code	M	Cable Dia. (mm)
DSSB-CC-TNC33	FR	29-32
DSSB-CC-TNC36	FR	33-36
DSSB-CC-TNC40	FR	37-40
DSSB-CC-TNC44	FR	41-44
DSSB-CC-TNC47	FR	45-47
DSSB-CC-TNC50	FR	48-50
DSSB-CC-TNC53	FR	51-53
DSSB-CC-TNC55	FR	54-55
DSSB-CC-TNC60	FR	56-60
DSSB-CC-TNC 63	FR	61-63
DSSB-CC-TNC67	FR	64-67
DSSB-CC-TNC70	FR	68-70
DSSB-CC-TNC 73	FR	71-73
DSSB-CC-TNC77	FR	74-77
DSSB-CC-TNC81	FR	78-81
DSSB-CC-TNC85	FR	82-85
DSSB-CC-TNC90	FR	86-90
DSSB-CC-TNC93	FR	91-93
DSSB-CC-TNC96	FR	94-96
DSSB-CC-TNC99	FR	97-99
DSSB-CC-TNC102	FR	100-102
DSSB-CC-TNC105	FR	103-105
DSSB-CC-TNC109	FR	106-109
DSSB-CC-TNC112	FR	110-112



Other size please send / call for enquiry

\* FR = Fibreglass Reinforced

\* M = Material



IEC 61914:2009

BS EN 50368 : 2003

## TREFOIL PLASTIC BASE (UV RESISTANT) -FOR OUTDOOR USE

Item Code	Trefoil Size
DSSB-CC-TB2849-UV	28-49
DSSB-CC-TB5070-UV	50-70
DSSB-CC-TB87102-UV	87-102





Redefining Supply  
An ISO 9001:2015 &  
14001:2015 Company

# DELTA SAMA JAYA SDN. BHD. (DSSB) (Reg. No: 500276-W)

No. 23G & 23M, DSSB Building, Jalan Perdana 6/8, Pandan Perdana,  
55300 Kuala Lumpur, Malaysia

Tel: +603-92824007, +603-92813778 Fax: +603-92870705

Email: (HQ): samajaya@substation.com.my, (Sales): sales@substation.com.my

Website: www.substation.com.my, www.cablecleat.com.my



## TREFOIL TWO HOLE PLASTIC CABLE CLEATS (UV RESISTANT) -FOR THREE CABLE (FOR OUTDOOR USE)

Item Code	OD	Cable Dia. (mm)	M
DSSB-CC-TNC33	UV	29-32	FR
DSSB-CC-TNC36	UV	33-36	FR
DSSB-CC-TNC40	UV	37-40	FR
DSSB-CC-TNC44	UV	41-44	FR
DSSB-CC-TNC47	UV	45-47	FR
DSSB-CC-TNC50	UV	48-50	FR
DSSB-CC-TNC53	UV	51-53	FR
DSSB-CC-TNC55	UV	54-55	FR
DSSB-CC-TNC60	UV	56-60	FR
DSSB-CC-TNC63	UV	61-63	FR
DSSB-CC-TNC67	UV	64-67	FR
DSSB-CC-TNC70	UV	68-70	FR
DSSB-CC-TNC73	UV	71-73	FR
DSSB-CC-TNC77	UV	74-77	FR
DSSB-CC-TNC81	UV	78-81	FR
DSSB-CC-TNC85	UV	82-85	FR
DSSB-CC-TNC90	UV	86-90	FR
DSSB-CC-TNC93	UV	91-93	FR
DSSB-CC-TNC96	UV	94-96	FR
DSSB-CC-TNC99	UV	97-99	FR
DSSB-CC-TNC102	UV	100-102	FR
DSSB-CC-TNC105	UV	103-105	FR
DSSB-CC-TNC109	UV	106-109	FR
DSSB-CC-TNC112	UV	110-112	FR



Other size please send / call for enquiry

\* FR = Fibreglass Reinforced

\*OD = Outdoor

\* M = Material



IEC 61914:2009

BS EN 50368 : 2003

## TREFOIL PLASTIC BASE (FOR INDOOR USE)

Item Code	Material	Trefoil Size
DSSB-CC-TB28-49	Plastic	28-49
DSSB-CC-TB36-47	FR	33-44
DSSB-CC-TB50-70	Plastic	50-70
DSSB-CC-TB87-102	Plastic	87-102

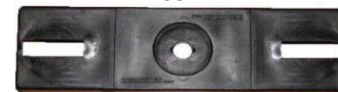
\* FR = Fibreglass Reinforced



28-49



33-44



50-70



87-102



*Redefining Supply*  
 An ISO 9001:2015 &  
 14001:2015 Company

# DELTA SAMA JAYA SDN. BHD. (DSSB) (Reg. No: 500276-W)

No. 23G & 23M, DSSB Building, Jalan Perdana 6/8, Pandan Perdana,  
 55300 Kuala Lumpur, Malaysia

Tel: +603-92824007, +603-92813778 Fax: +603-92870705

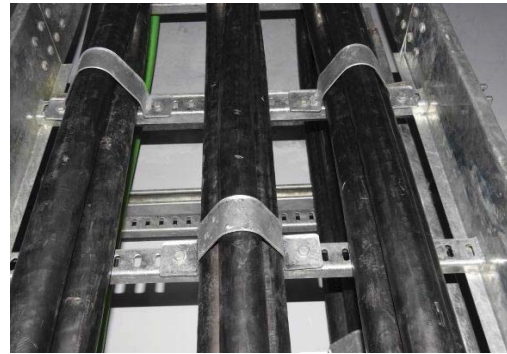
Email: (HQ): samajaya@substation.com.my, (Sales): sales@substation.com.my

Website: [www.substation.com.my](http://www.substation.com.my), [www.cablecleat.com.my](http://www.cablecleat.com.my)



## HDG CABLE CLEATS (HOT | DIPPED | GALVANIZED) - FOR THREE CABLE

Item No.	Cable Diameter (mm)
DSSB-CC-THC32	29-32
DSSB-CC-THC36	33-36
DSSB-CC-THC40	37-40
DSSB-CC-THC44	41-44
DSSB-CC-THC47	45-47
DSSB-CC-THC50	48-50
DSSB-CC-THC53	51-53
DSSB-CC-THC55	54-55
DSSB-CC-THC60	56-60
DSSB-CC-THC63	61-63
DSSB-CC-THC67	64-67
DSSB-CC-THC70	68-70
DSSB-CC-THC73	71-73
DSSB-CC-THC77	74-77
DSSB-CC-THC81	78-81
DSSB-CC-THC85	82-85
DSSB-CC-THC90	86-90
DSSB-CC-THC93	91-93
DSSB-CC-THC96	94-96
DSSB-CC-THC99	97-99
DSSB-CC-THC102	100-102
DSSB-CC-THC105	103-105
DSSB-CC-THC109	106-109
DSSB-CC-THC112	110-112







*Redefining Supply*  
 An ISO 9001:2015 &  
 14001:2015 Company

# DELTA SAMA JAYA SDN. BHD. (DSSB) (Reg. No: 500276-W)

No. 23G & 23M, DSSB Building, Jalan Perdana 6/8, Pandan Perdana,  
 55300 Kuala Lumpur, Malaysia

Tel: +603-92824007, +603-92813778 Fax: +603-92870705

Email: (HQ): samajaya@substation.com.my, (Sales): sales@substation.com.my

Website: [www.substation.com.my](http://www.substation.com.my), [www.cablecleat.com.my](http://www.cablecleat.com.my)



ITEM CODE	Cable Diameter (mm)
DSSB-CC-HSC32	29-32
DSSB-CC-HSC36	33-36
DSSB-CC-HSC40	37-40
DSSB-CC-HSC44	41-44
DSSB-CC-HSC47	45-47
DSSB-CC-HSC50	48-50
DSSB-CC-HSC53	51-53
DSSB-CC-HSC55	54-55
DSSB-CC-HSC60	56-60
DSSB-CC-HSC63	61-63
DSSB-CC-HSC67	64-67
DSSB-CC-HSC70	68-70
DSSB-CC-HSC73	71-73
DSSB-CC-HSC77	74-77
DSSB-CC-HSC81	78-81
DSSB-CC-HSC85	82-85
DSSB-CC-HSC90	86-90
DSSB-CC-HSC93	91-93
DSSB-CC-HSC96	94-96
DSSB-CC-HSC99	97-99
DSSB-CC-HSC102	100-102
DSSB-CC-HSC105	103-105
DSSB-CC-HSC109	106-109
DSSB-CC-HSC112	110-112







*Redefining Supply*  
 An ISO 9001:2015 &  
 14001:2015 Company

# DELTA SAMA JAYA SDN. BHD. (DSSB) (Reg. No: 500276-W)

No. 23G & 23M, DSSB Building, Jalan Perdana 6/8, Pandan Perdana,  
 55300 Kuala Lumpur, Malaysia

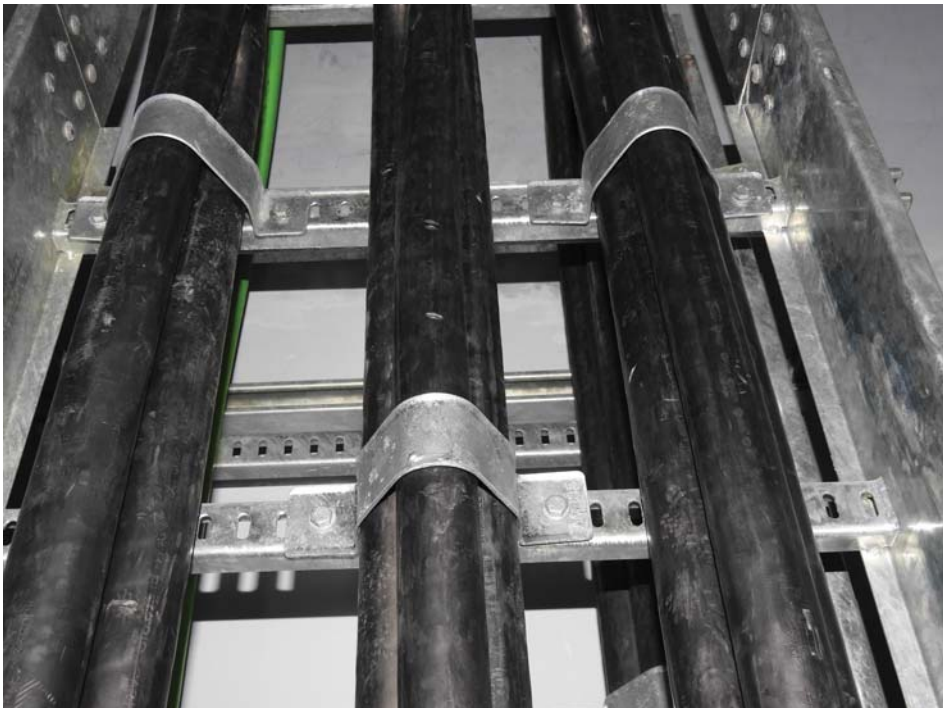
Tel: +603-92824007, +603-92813778 Fax: +603-92870705

Email: (HQ): samajaya@substation.com.my, (Sales): sales@substation.com.my

Website: [www.substation.com.my](http://www.substation.com.my), [www.cablecleat.com.my](http://www.cablecleat.com.my)



## Mass Rapid Transit (MRT)





*Redefining Supply*  
 An ISO 9001:2015 &  
 14001:2015 Company

# DELTA SAMA JAYA SDN. BHD. (DSSB) (Reg. No: 500276-W)

No. 23G & 23M, DSSB Building, Jalan Perdana 6/8, Pandan Perdana,  
 55300 Kuala Lumpur, Malaysia

Tel: +603-92824007, +603-92813778 Fax: +603-92870705

Email: (HQ): samajaya@substation.com.my, (Sales): sales@substation.com.my

Website: [www.substation.com.my](http://www.substation.com.my), [www.cablecleat.com.my](http://www.cablecleat.com.my)







*Redefining Supply*  
 An ISO 9001:2015 &  
 14001:2015 Company

# DELTA SAMA JAYA SDN. BHD. (DSSB) (Reg. No: 500276-W)

No. 23G & 23M, DSSB Building, Jalan Perdana 6/8, Pandan Perdana,  
 55300 Kuala Lumpur, Malaysia

Tel: +603-92824007, +603-92813778 Fax: +603-92870705

Email: (HQ): samajaya@substation.com.my, (Sales): sales@substation.com.my

Website: www.substation.com.my, www.cablecleat.com.my





*Redefining Supply*  
 An ISO 9001:2015 &  
 14001:2015 Company

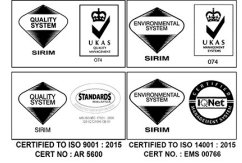
# DELTA SAMA JAYA SDN. BHD. (DSSB) (Reg. No: 500276-W)

No. 23G & 23M, DSSB Building, Jalan Perdana 6/8, Pandan Perdana,  
 55300 Kuala Lumpur, Malaysia

Tel: +603-92824007, +603-92813778 Fax: +603-92870705

Email: (HQ): samajaya@substation.com.my, (Sales): sales@substation.com.my

Website: [www.substation.com.my](http://www.substation.com.my), [www.cablecleat.com.my](http://www.cablecleat.com.my)



## Light Rail Transit (LRT)







# DELTA SAMA JAYA SDN. BHD. (DSSB) (Reg. No: 500276-W)

No. 23G & 23M, DSSB Building, Jalan Perdana 6/8, Pandan Perdana,  
55300 Kuala Lumpur, Malaysia

Tel: +603-92824007, +603-92813778 Fax: +603-92870705

Email: (HQ): samajaya@substation.com.my, (Sales): sales@substation.com.my

Website: [www.substation.com.my](http://www.substation.com.my), [www.cablecleat.com.my](http://www.cablecleat.com.my)

*Redefining Supply*  
An ISO 9001:2015 &  
14001:2015 Company





*Redefining Supply*  
 An ISO 9001:2015 &  
 14001:2015 Company

# DELTA SAMA JAYA SDN. BHD. (DSSB) (Reg. No: 500276-W)

No. 23G & 23M, DSSB Building, Jalan Perdana 6/8, Pandan Perdana,  
 55300 Kuala Lumpur, Malaysia

Tel: +603-92824007, +603-92813778 Fax: +603-92870705

Email: (HQ): samajaya@substation.com.my, (Sales): sales@substation.com.my

Website: [www.substation.com.my](http://www.substation.com.my), [www.cablecleat.com.my](http://www.cablecleat.com.my)







*Redefining Supply*  
 An ISO 9001:2015 &  
 14001:2015 Company

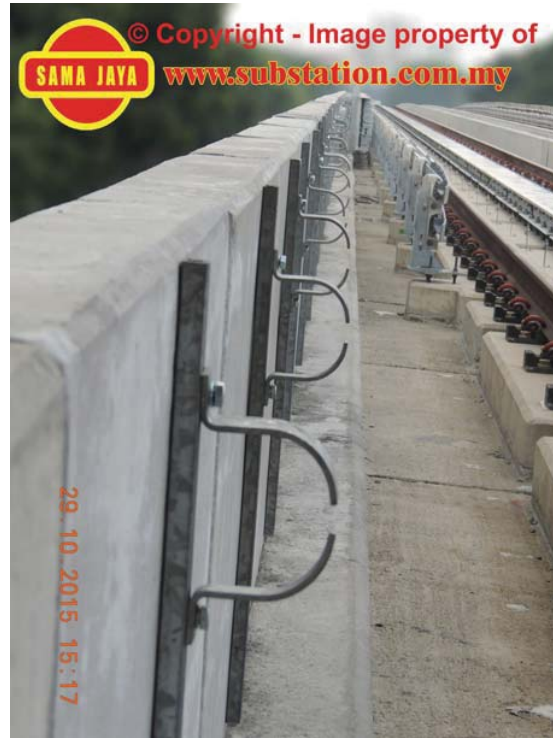
# DELTA SAMA JAYA SDN. BHD. (DSSB) (Reg. No: 500276-W)

No. 23G & 23M, DSSB Building, Jalan Perdana 6/8, Pandan Perdana,  
 55300 Kuala Lumpur, Malaysia

Tel: +603-92824007, +603-92813778 Fax: +603-92870705

Email: (HQ): samajaya@substation.com.my, (Sales): sales@substation.com.my

Website: [www.substation.com.my](http://www.substation.com.my), [www.cablecleat.com.my](http://www.cablecleat.com.my)





Redefining Supply  
An ISO 9001:2015 &  
14001:2015 Company

# DELTA SAMA JAYA SDN. BHD. (DSSB) (Reg. No: 500276-W)

No. 23G & 23M, DSSB Building, Jalan Perdana 6/8, Pandan Perdana,  
55300 Kuala Lumpur, Malaysia

Tel: +603-92824007, +603-92813778 Fax: +603-92870705

Email: (HQ): samajaya@substation.com.my, (Sales): sales@substation.com.my

Website: [www.substation.com.my](http://www.substation.com.my), [www.cablecleat.com.my](http://www.cablecleat.com.my)



## CABLE CLEATS & CABLE SLABS

DATE : 15/01/2018

### RoHS COMPLIANCE STATEMENT

#### EU-directive one substance restrictions (RoHS-Directive 2011/65/EU)

RoHS Directive 2011/65/EU has the restriction of the use of certain hazardous substances as their aim.

To this end, maximum values were specified for these substances.

The substances affected are:

- Lead, mercury, hexavalent chromium, polybrominated biphenyl (PBB), polybrominated diphenyl ether (PBCE) – a maximum of 0.1% by weight is permissible for these substances
- Cadmium- a maximum of 0.01% by weight is permissible for this substance

We confirm that our products in Cable Cleats & High-Quality Plastic Slabs are manufactured according to the actual version of RoHS-Directive 2011/65/EU.



**RAIL  
GLANDING  
&  
TERMINATION**



*Redefining Supply*  
 An ISO 9001:2015 &  
 14001:2015 Company

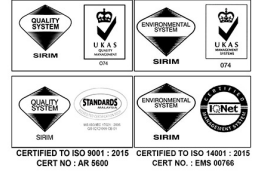
# DELTA SAMA JAYA SDN. BHD. (DSSB) (Reg. No: 500276-W)

No. 23G & 23M, DSSB Building, Jalan Perdana 6/8, Pandan Perdana,  
 55300 Kuala Lumpur, Malaysia

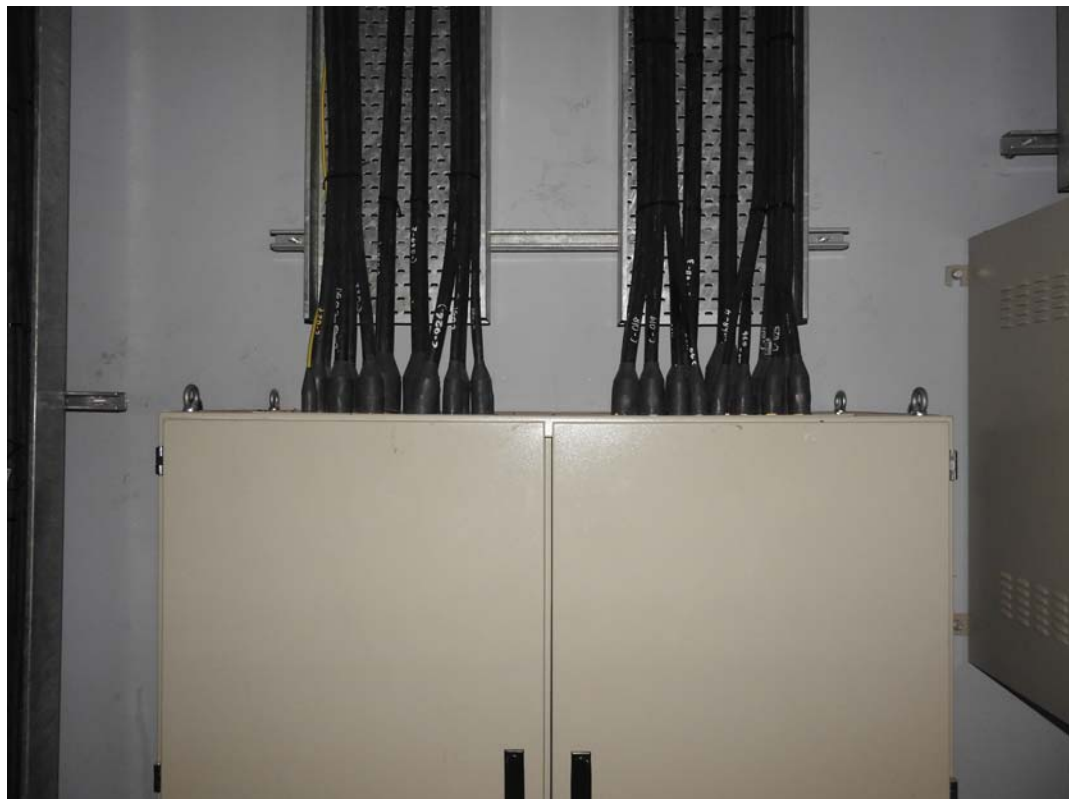
Tel: +603-92824007, +603-92813778 Fax: +603-92870705

Email: (HQ): samajaya@substation.com.my, (Sales): sales@substation.com.my

Website: www.substation.com.my, www.cablecleat.com.my



## Mass Rapid Transit (MRT)





Redefining Supply  
An ISO 9001:2015 &  
14001:2015 Company

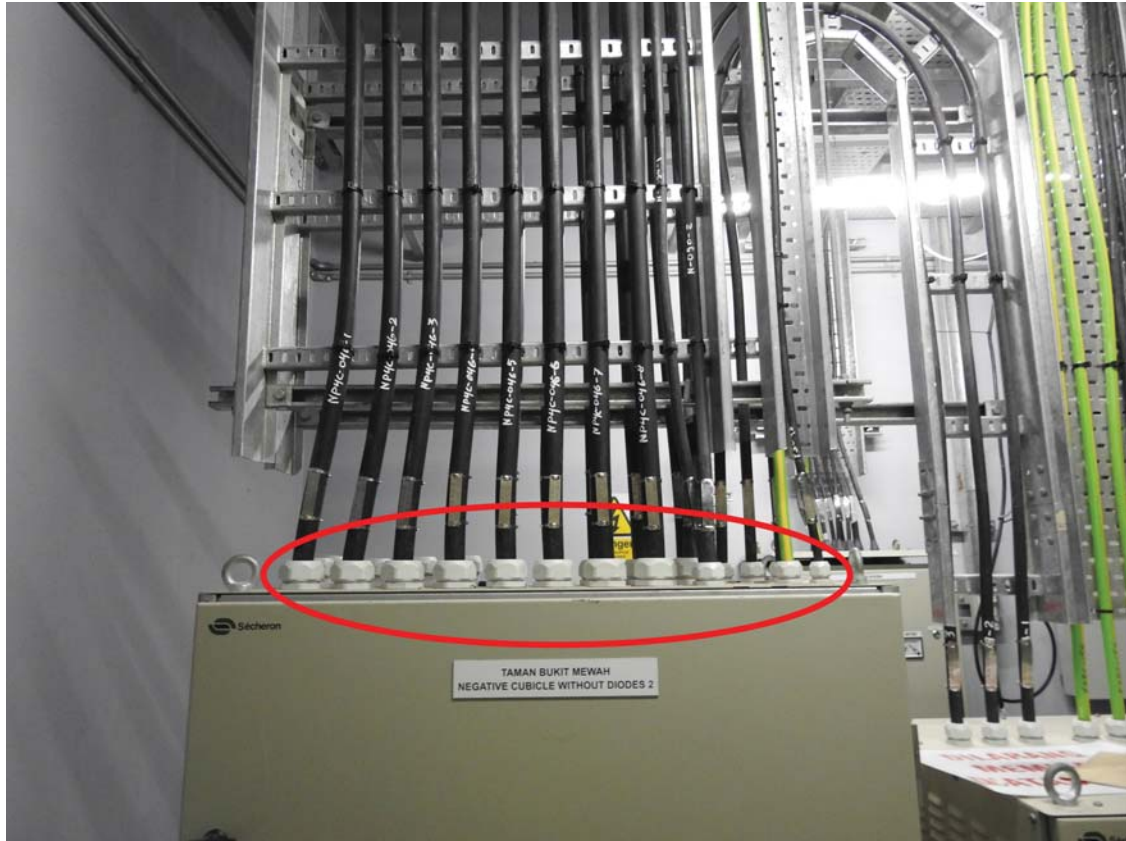
# DELTA SAMA JAYA SDN. BHD. (DSSB) (Reg. No: 500276-W)

No. 23G & 23M, DSSB Building, Jalan Perdana 6/8, Pandan Perdana,  
55300 Kuala Lumpur, Malaysia

Tel: +603-92824007, +603-92813778 Fax: +603-92870705

Email: (HQ): samajaya@substation.com.my, (Sales): sales@substation.com.my

Website: www.substation.com.my, www.cablecleat.com.my





**RAIL  
SIGNAGE**



*Redefining Supply*  
 An ISO 9001:2015 &  
 14001:2015 Company

# DELTA SAMA JAYA SDN. BHD. (DSSB) (Reg. No: 500276-W)

No. 23G & 23M, DSSB Building, Jalan Perdana 6/8, Pandan Perdana,  
 55300 Kuala Lumpur, Malaysia

Tel: +603-92824007, +603-92813778 Fax: +603-92870705

Email: (HQ): samajaya@substation.com.my, (Sales): sales@substation.com.my

Website: [www.substation.com.my](http://www.substation.com.my), [www.cablecleat.com.my](http://www.cablecleat.com.my)



## SIGNAGES/ LABEL/NAME PLATE MASS RAPID TRANSIT (MRT)





*Redefining Supply*  
 An ISO 9001:2015 &  
 14001:2015 Company

# DELTA SAMA JAYA SDN. BHD. (DSSB) (Reg. No: 500276-W)

No. 23G & 23M, DSSB Building, Jalan Perdana 6/8, Pandan Perdana,  
 55300 Kuala Lumpur, Malaysia

Tel: +603-92824007, +603-92813778 Fax: +603-92870705

Email: (HQ): samajaya@substation.com.my, (Sales): sales@substation.com.my

Website: [www.substation.com.my](http://www.substation.com.my), [www.cablecleat.com.my](http://www.cablecleat.com.my)





**RAIL  
LIGHTNING  
PROTECTION  
SYSTEM**



*Redefining Supply*  
 An ISO 9001:2015 &  
 14001:2015 Company

# DELTA SAMA JAYA SDN. BHD. (DSSB) (Reg. No: 500276-W)

No. 23G & 23M, DSSB Building, Jalan Perdana 6/8, Pandan Perdana,  
 55300 Kuala Lumpur, Malaysia

Tel: +603-92824007, +603-92813778 Fax: +603-92870705

Email: (HQ): samajaya@substation.com.my, (Sales): sales@substation.com.my

Website: [www.substation.com.my](http://www.substation.com.my), [www.cablecleat.com.my](http://www.cablecleat.com.my)



## MASS RAPID TRANSIT (MRT) LIGHTNING PROTECTION SYSTEM



**RAIL  
STAINLESS  
STEEL BAND**





*Redefining Supply*  
 An ISO 9001:2015 &  
 14001:2015 Company

# DELTA SAMA JAYA SDN. BHD. (DSSB) (Reg. No: 500276-W)

No. 23G & 23M, DSSB Building, Jalan Perdana 6/8, Pandan Perdana,  
 55300 Kuala Lumpur, Malaysia

Tel: +603-92824007, +603-92813778 Fax: +603-92870705

Email: (HQ): samajaya@substation.com.my, (Sales): sales@substation.com.my

Website: www.substation.com.my, www.cablecleat.com.my



## Keretapi Tanah Melayu (KTM)



# **MRT TUNNEL**



*Redefining Supply*  
 An ISO 9001:2015 &  
 14001:2015 Company

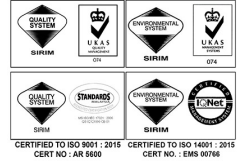
# DELTA SAMA JAYA SDN. BHD. (DSSB) (Reg. No: 500276-W)

No. 23G & 23M, DSSB Building, Jalan Perdana 6/8, Pandan Perdana,  
 55300 Kuala Lumpur, Malaysia

Tel: +603-92824007, +603-92813778 Fax: +603-92870705

Email: (HQ): samajaya@substation.com.my, (Sales): sales@substation.com.my

Website: www.substation.com.my, www.cablecleat.com.my



## HDG TREFOIL CABLE CLEATS/CLAMPS MASS RAPID TRANSIT (MRT)



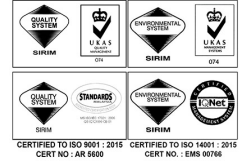




*Redefining Supply*  
 An ISO 9001:2015 &  
 14001:2015 Company

# DELTA SAMA JAYA SDN. BHD. (DSSB) (Reg. No: 500276-W)

No. 23G & 23M, DSSB Building, Jalan Perdana 6/8, Pandan Perdana,  
 55300 Kuala Lumpur, Malaysia  
 Tel: +603-92824007, +603-92813778 Fax: +603-92870705  
 Email: (HQ): samajaya@substation.com.my, (Sales): sales@substation.com.my  
 Website: www.substation.com.my, www.cablecleat.com.my



## CABLE SUPPORT HOOK TYPE





*Redefining Supply*  
 An ISO 9001:2015 &  
 14001:2015 Company

# DELTA SAMA JAYA SDN. BHD. (DSSB) (Reg. No: 500276-W)

No. 23G & 23M, DSSB Building, Jalan Perdana 6/8, Pandan Perdana,  
 55300 Kuala Lumpur, Malaysia

Tel: +603-92824007, +603-92813778 Fax: +603-92870705

Email: (HQ): samajaya@substation.com.my, (Sales): sales@substation.com.my

Website: [www.substation.com.my](http://www.substation.com.my), [www.cablecleat.com.my](http://www.cablecleat.com.my)



## HANGING CLAMPS PLASTIC AND METAL TYPE





*Redefining Supply*  
 An ISO 9001:2015 &  
 14001:2015 Company

# DELTA SAMA JAYA SDN. BHD. (DSSB) (Reg. No: 500276-W)

No. 23G & 23M, DSSB Building, Jalan Perdana 6/8, Pandan Perdana,  
 55300 Kuala Lumpur, Malaysia

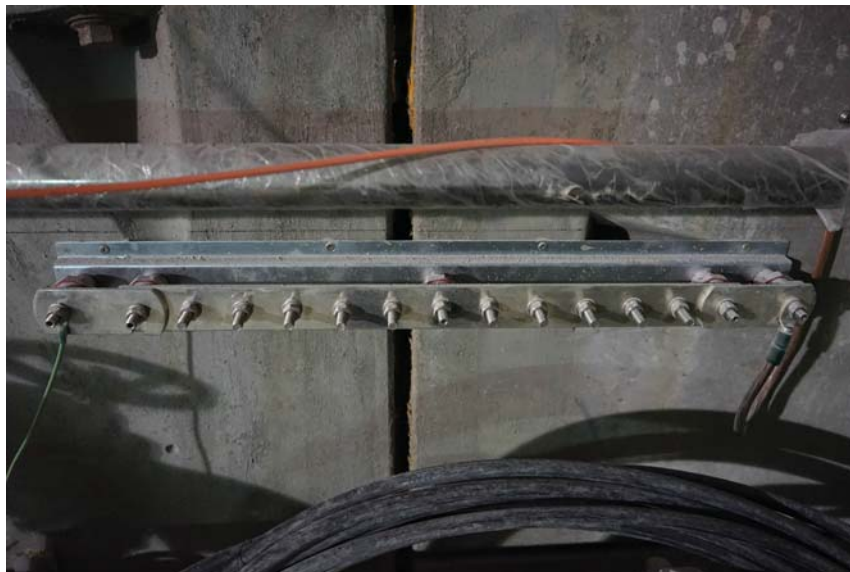
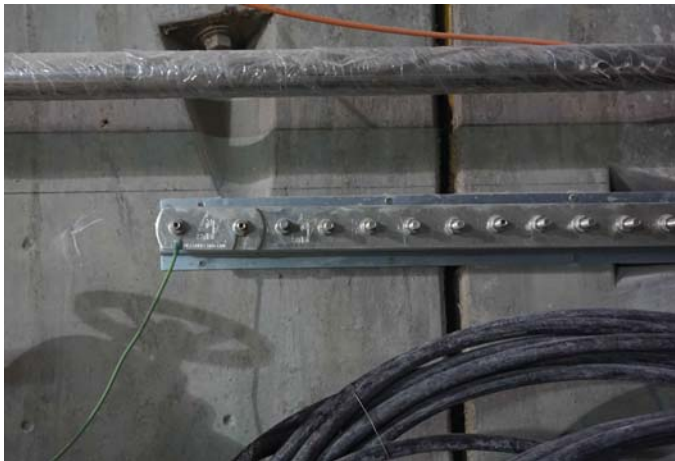
Tel: +603-92824007, +603-92813778 Fax: +603-92870705

Email: (HQ): samajaya@substation.com.my, (Sales): sales@substation.com.my

Website: [www.substation.com.my](http://www.substation.com.my), [www.cablecleat.com.my](http://www.cablecleat.com.my)



## EARTH LINK BAR WITH DISCONNECTING LINK MASS RAPID TRANSIT (MRT) TUNNEL







*Redefining Supply*  
 An ISO 9001:2015 &  
 14001:2015 Company

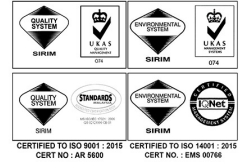
# DELTA SAMA JAYA SDN. BHD. (DSSB) (Reg. No: 500276-W)

No. 23G & 23M, DSSB Building, Jalan Perdana 6/8, Pandan Perdana,  
 55300 Kuala Lumpur, Malaysia

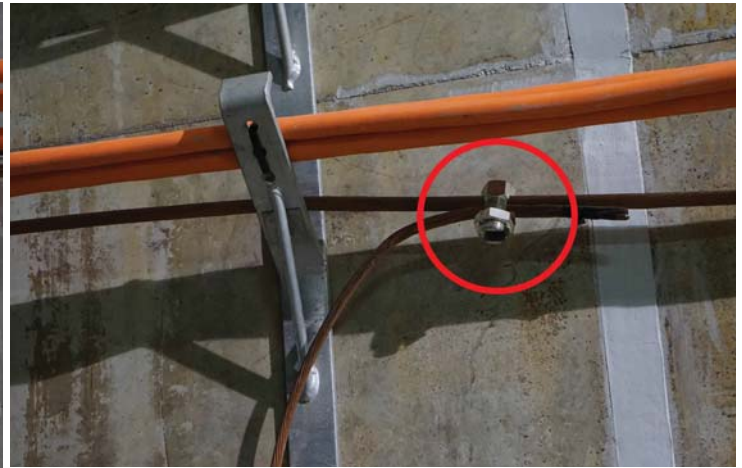
Tel: +603-92824007, +603-92813778 Fax: +603-92870705

Email: (HQ): samajaya@substation.com.my, (Sales): sales@substation.com.my

Website: [www.substation.com.my](http://www.substation.com.my), [www.cablecleat.com.my](http://www.cablecleat.com.my)



## EARTHING SYSTEM MASS RAPID TRANSIT (MRT) TUNNEL





*Redefining Supply*  
 An ISO 9001:2015 &  
 14001:2015 Company

# DELTA SAMA JAYA SDN. BHD. (DSSB) (Reg. No: 500276-W)

No. 23G & 23M, DSSB Building, Jalan Perdana 6/8, Pandan Perdana,  
 55300 Kuala Lumpur, Malaysia

Tel: +603-92824007, +603-92813778 Fax: +603-92870705

Email: (HQ): samajaya@substation.com.my, (Sales): sales@substation.com.my

Website: [www.substation.com.my](http://www.substation.com.my), [www.cablecleat.com.my](http://www.cablecleat.com.my)



## SIGNAGES/ LABEL/NAME PLATE MASS RAPID TRANSIT (MRT) TUNNEL



# **REFERENCE LIST**





*Redefining Supply*  
An ISO 9001:2015 &  
14001:2015 Company

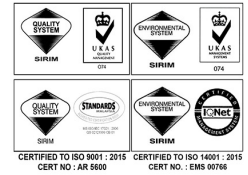
# DELTA SAMA JAYA SDN. BHD. (DSSB) (Reg. No: 500276-W)

No. 23G & 23M, DSSB Building, Jalan Perdana 6/8, Pandan Perdana,  
55300 Kuala Lumpur, Malaysia

Tel: +603-92824007, +603-92813778 Fax: +603-92870705

Email: (HQ): samajaya@substation.com.my, (Sales): sales@substation.com.my

Website: [www.substation.com.my](http://www.substation.com.my), [www.cablecleat.com.my](http://www.cablecleat.com.my)



## Railway

### KTMB

1. IPOH - PADANG BESAR Electrified Railway Double Tracking
2. RAWANG - IPOH Rail Electrified Double Tracking Project
3. SEREMBAN - GEMAS Rail Electrified Double Tracking Project
4. RAWANG to SEREMBAN Rail Electrified Double Tracking Project

### LRT

1. LRT Kelana Jaya Line 2
2. LRT Putra Heights (Depot)
3. LRT Ampang Line Extension

### MRT

1. MRT Sungai Buloh Depot
2. MRT Kajang Depot
3. MRT - Tun Razak Exchange Station
4. MRT - Ara Damansara
5. MRT - Taman Midah

# Delta Sama Jaya Sdn.Bhd.



**DELTA SAMA JAYA**  
[www.substation.com.my](http://www.substation.com.my)

We are constantly reviewing and updating our products,  
for the latest information please call us on (+603) 9281 3778  
or visit our website at: [www.substation.com.my](http://www.substation.com.my)