

SUBSTATION AND RAIL SAFETY EQUIPMENT



Tab 12A

PORTABLE EARTHING EQUIPMENT FOR SUBSTATION

FOR SUBSTATION

Portable Earthing Equipment

Item Code
DSSB-SLE-PEE

Description:

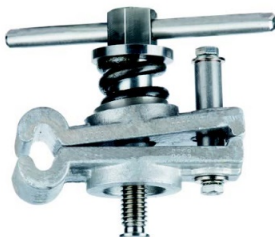
- 3 x 7m Earthing Lead Conductors (150sqmm)
- 4 x 1.22m Operating Pole (1 x Top Pole with S9D Operating Socket , 2 x Intermediate Pole, 1 x Bottom Pole with Rain Shield)
- 3 x Line End Clamp (CE22 A+B)
- 3 x Earth Clamp (S9A Standard) or (CE20/ES1-E1 upon request)
- 1 x Carry Bag



Earth Lead Conductor



Earth Clamp S9A (Standard)



Earth Clamp CE20/ESI-E1 (Upon Request)



Line End Clamp (CE22 A+B)



Top Pole with Operating Socket S9D



Intermediate Pole



Bottom Pole with Rain Shield & End Plug



Carrying Bag



PORTABLE EARTHING EQUIPMENT FOR SUBSTATION

[Click Here For Product Flyer](#)

FOR SUBSTATION

PVC Carrying Bags

Item Code
DSSB-SLE-PEE-BAG

Robust fabric reinforced PVC carrying bags can be supplied for the storage and handling of distribution line. These will provide protection of the equipment during transit as well as easing transportation in the field and keeps the earth equipment clean and dry.

Quick release buckles or straps with Velcro fixings are supplied on the bags which also come with a black webbing shoulder strap.

Product Benefits

- Reinforced material
- Easy storage
- Quick release opening
- Carrying strap
- Different colours and sizes available Operating Sockets



Operating Poles

Item Code	Detail
DSSB-SLE-PEE-OP-TOP	TOP POLE
DSSB-SLE-PEE-OP-INT	INTERMEDIATE POLE
DSSB-SLE-PEE-OP-BTM	BOTTOM POLE

*Operating Socket is not included for **Top Poles**

Description:

Operating poles are manufactured from a lightweight resin-impregnated, electrical insulation grade fibre glass.

The poles are machined to provide rigid assembly and include a double sided snap action spring locking device. 4 feet Operating Pole suitable for 66-400kV for use in accordance with ENA Technical Specification.

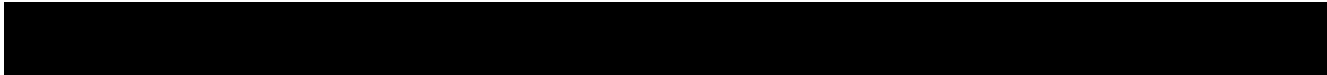
Sections Available: Top, Bottom and Intermediate

Compatible with: S9D and CEA/S2 Sockets

Length: 1.22 m



PORTABLE EARTHING EQUIPMENT FOR SUBSTATION



FOR SUBSTATION

Earth Leads

Item Code	Short Circuit Rating	Cont. Current Rating	Size
DSSB-SLE-PEE-150EL	17.5kA/2sec	350A	150 sq.mm

Description:

Earthing Leads is produced from multi-stranded, commercially pure aluminium with an extruded pvc sheath to protect the cable from damage.

The 150sqmm flexible aluminium earth lead comes with tested and approved compression terminations and support sleeves which are used for connecting between a line end clamp and an earth end clamp.

Benefits

- Aluminium is less expensive than copper
- Light and flexible
- Aluminium is less vulnerable to copper theft



DSSB-SLE-PEE-150EL

Further Technical Details:

Aluflex leads are designed to meet specific requirements of ENA technical specification 41/21

For use in Substations, 150EL is always used as a primary lead and suitable for the CE20 Clamp to connect to the Substation Earth Tap.



Operating Socket

Item Code
DSSB-SLE-PEE-S9D ESI

Description:

S9D Operating Socket is suitable for the attachment of a line end clamp with a long taper op screw to a P&B style operating pole. Sprung

Product Benefits

- Lightweight Alloy
- Rugged construction
- Excellent anti-corrosive properties
- Adaptors available to convert operating poles types/fitting
- Precision machined



PORTABLE EARTHING EQUIPMENT FOR SUBSTATION

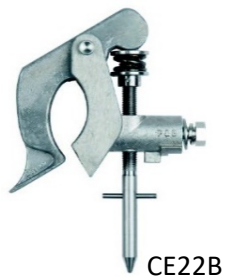
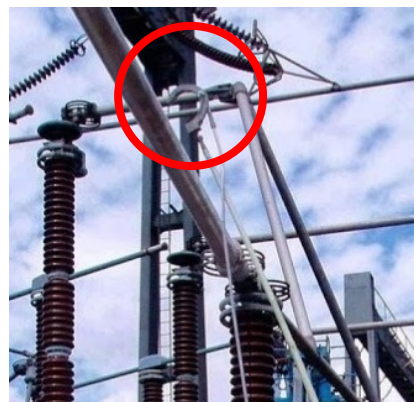
FOR SUBSTATION

Line End Clamps

Item Code	Clamp Diameter	Short Circuit Rating	Max Number of Leads
DSSB-SLE-PEE-CE22A/ESI-L1	10mm-38mm	17.5kA for 2 secs	1 lead
DSSB-SLE-PEE-CE22 A+B	19mm-76mm	17.5kA for 2 secs	1 lead
DSSB-SLE-PEE-CE25	35mm-75mm	38kA for 2 secs	2 leads
DSSB-SLE-PEE-CE22B/ESI-L2	37mm-76mm	17.5kA for 2 secs	1 lead
DSSB-SLE-PEE-CE22C/ESI-L3	60mm-90mm	17.5kA for 2 secs	1 lead
DSSB-SLE-PEE-CE15	90mm	36.5kA for 2 secs	2 leads
DSSB-SLE-PEE-CE27	101.6mm	17.5kA for 2 secs	2 leads
DSSB-SLE-PEE-CE16/5/ESI-L4	127mm only	50kA for 3 secs	3 leads
DSSB-SLE-PEE-CE16/5/.5/ESI-L5	140mm only	50kA for 3 secs	3 leads
DSSB-SLE-PEE-CE51	140mm-160 mm	38kA for 2 secs	2 leads
DSSB-SLE-PEE-CE50	190mm-200mm	38kA for 2 secs	2 leads
DSSB-SLE-PEE-CE71	220-250mm	17.5kA for 2 secs	1 lead

Product Benefits:

- Lightweight
- Precision machine for rigidity



PORTABLE EARTHING EQUIPMENT FOR SUBSTATION

FOR SUBSTATION

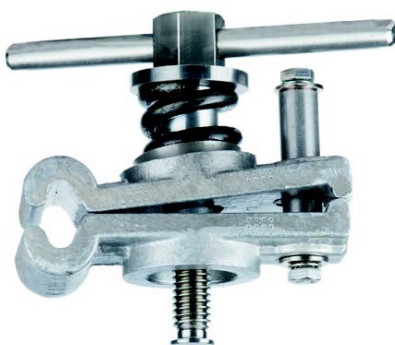
Earth End Clamp

Item Code	Earth Tape Thickness (mm)	Earth Tape Width (mm)	Short Circuit Rating
DSSB-SLE-PEE-CE20/ESI-E1	3.2 - 6.5mm	38 - 50mm	38kA/2sec

For Application to clean or dirty copper or aluminium strip.

Note: When secured the spring shall be fully compressed and this shall be readily visible.

Tested to 38kA for 2 secs



DSSB-SLE-PEE-CE20/ESI-E1



S9A LONG TAPER EARTH END CLAMP 135H

Item Code	Clamping Range	Short Circuit Rating	Operating Screw	Weight
DSSB-SLE-PEE-S9A-135H	For up to 20mm thick bar	17.5 kA/2s	Long Taper	0.38 kg



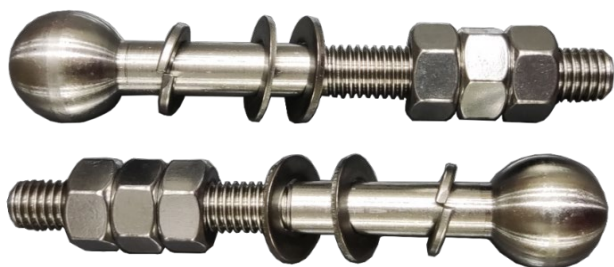
PORTABLE EARTHING EQUIPMENT FOR SUBSTATION

FOR SUBSTATION

Stainless Steel Earthing Round Bolt Set

Item Code	Bolt Size
DSSB-EA-RHB-M12100SS	M12 x 100 mm

Round Bolt Set Come With : Earthing Round Bolt x 1
 : M12 Nuts x 3
 : Flat Washer x 2
 : Spring Washer x 1



Carrying Case (Very Heavy Duty)

Item Code
DSSB-SLE-PEE-CC



PORTABLE EARTHING EQUIPMENT FOR SUBSTATION

PORTABLE EARTHING EQUIPMENT FOR TRANSMISSION

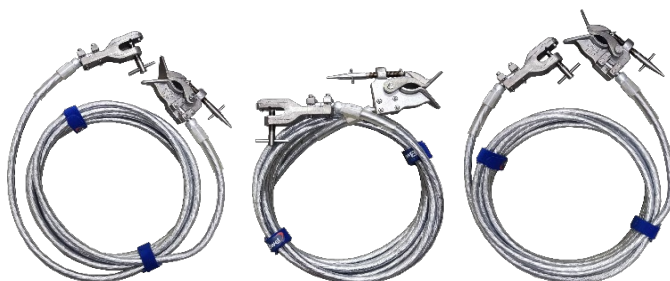
FOR TRANSMISSION

Portable Earthing Equipment

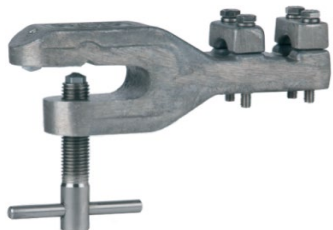
Item Code
DSSB-TLE-PEE

Description:

- 3 x 7m Earthing Lead Conductors
- 4 x 1.22m Operating Pole (1 x Top Pole with Operating Socket OL1, 2 x Intermediate Pole, 1 x Bottom Pole)
- 3 x Line End Clamp (CE69)
- 3 x Earth Clamp (CE10/A2)
- 1 x Carry Bag



Earthing Lead Conductor



Earth Clamp (CE10/A2)



Line End Clamp (CE69)



Top Pole with Operating Socket OL1



Intermediate Pole



Bottom Pole & Plug



PORTABLE EARTHING EQUIPMENT FOR TRANSMISSION

FOR TRANSMISSION

Operating Poles

Item Code
DSSB-TLE-PEE-OP

Description:

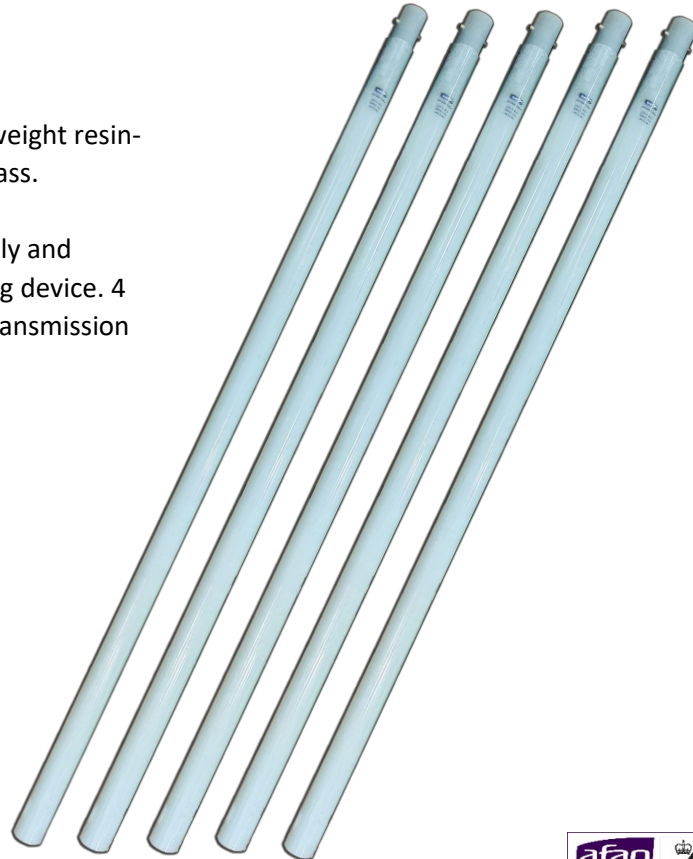
Operating poles are manufactured from a lightweight resin-impregnated, electrical insulation grade fibre glass.

The poles are machined to provide rigid assembly and include a double sided snap action apring locking device. 4 feet Operating Pole suitable for 66-400kV for Transmission Line Use.

Length: 1.22 m

Product Benefits:

- Open weave hand grips
- Rain shields available
- Snap action' button joints
- Lightweight rigid sections



OL1 Operating Socket

Item Code
DSSB-TLE-PEE-OL1

The OL1 Operating Socket is suitable for the Transmission Line Operating Poles.

Suitable for fitting Long Taper Clamps, Spring Loaded.

Product Benefits

- Lightweight Alloy
- Rugged construction
- Excellent anti-corrosive properties
- Adaptors available to convert operating poles types/fitting
- Precision machined



PORTABLE EARTHING EQUIPMENT FOR TRANSMISSION

FOR TRANSMISSION

Earth Leads

Item Code	Short Circuit Rating	Cont. Current Rating
DSSB-TLE-PEE-50EL	8.9kA/1s	150A
DSSB-TLE-PEE-120EL	20kA/1s	300A

The Earth leads are available in 50sqmm and 120sqmm sizes.

Earth bond are of a 50sqmm/120sqmm nominal section terminated either by PB50/PB120 palm type terminations or PB50F/PB 120F Ferrule terminations, depending upon which style CE60 Sparrow plates is used, Flexible clear P.V.C stress-relieving sleeves are fitted to prevent excessive wear around the compression joints.

Product Benefits:

- Aluminium is less expensive than copper
- Light and flexible
- Aluminium is less vulnerable to theft than copper
- Available in any lengths on request



Line End Clamps

Item Code
DSSB-TLE-PEE-CE69

Product Details:

The CE69 clamp is to be applied in either an upward or downward direction utilising an OL1 operating socket attached to an insulated operating pole. The spring-loaded jaws enable the clamp to be slipped easily over the line conductor and retain the clamp in position whilst the operating screw is being tightened or loosened. The clamp is suitable for application to conductors ranging from 13mm to 46mm.

- Short Circuit Rating: 20kA/ 1s
- Cont. Current Rating: 300A
- Clamping Diameter: 13-46mm

Product Benefits:

- Solid construction to give extended service
- Proven service record use by ESI for 40 years
- Lightweight and good corrosion resistance.
- Angled jaws allow application from a near-horizontal position



CE69



PORTABLE EARTHING EQUIPMENT FOR TRANSMISSION

FOR TRANSMISSION

Earth End Clamp

Item Code
DSSB-TLE-PEE-CE10/A2

Short Circuit Rating: 8.9kA/ 1s

Cont. Current Rating: 150A

The CE10/A2 clamp is for direct application by hand to steelwork. The large thumbscrew of the device has a captive hardened steel tip which penetrates through painted, weathered or non-conductive surfaces and indents into the steel work, ensuring a strong connection to earth potential.



CE10/A2



CE60 Sparrow Plate

Item Code
DSSB-SLE-PEE-CE60

Used to provide a common point of connection for portable drain earths that will permit the safe and effective control of induced currents and voltages.

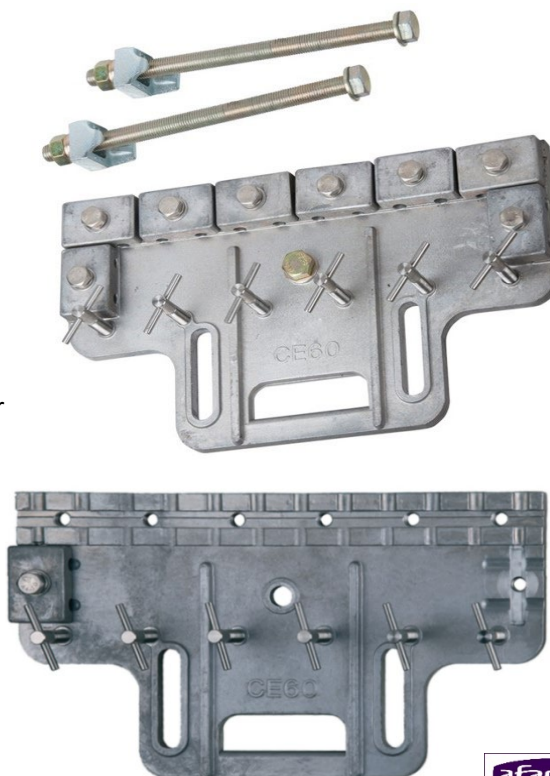
Product Details:

Fits up to six portable Line Earths and up to six further equipment earth with PB50F terminations. Provision for up to four interconnecting leads (120 sq.mm) with PB120F terminations.

- Short Circuit Rating: 36kA/ 1s
- Cont. Current Rating: 600A

Product Benefits:

- Lightweight aluminium alloy
- Excellent corrosion resistance
- PB50F and PB120F ferrule compatible



PORTABLE EARTHING EQUIPMENT FOR TRANSMISSION



Redefining Supply
An ISO 9001 &
14001 Company

PORTABLE EARTHING EQUIPMENT FOR DISTRIBUTION LINE

DISTRIBUTION LINE EARTHING KITS

Distribution Line Earthing Kit - DLE/1

Item Code
DSSB-DLE-PEE-DLE/1

Description:

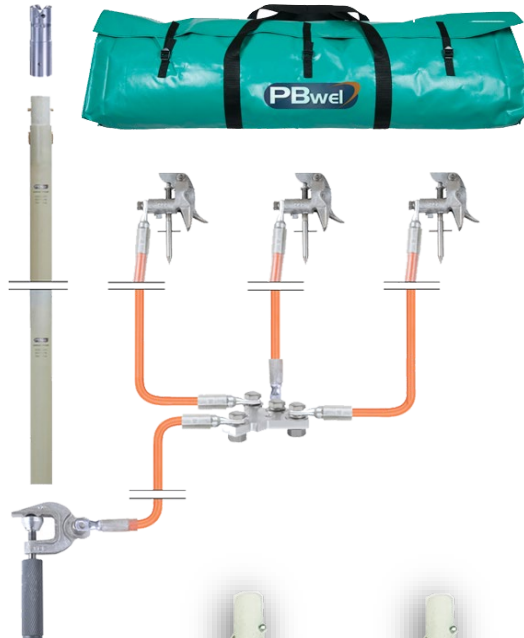
The 33kV standard distribution line earthing kit is supplied with parking bar, S9B clamps with a short taper operating screw, orange aluflex earth lead and an earth end clamp.

Technical Detail

Short Circuit Rating : 20kA/1s (Phase to Phase)

Comprising:

- 3 x S9B Short Taper Line End Clamps
- 3 x 3m Long Arctic Orange 120sqmm Aluflex Leads
- 1 x Type-A Terminal Plate
- 1 x 6m Long Arctic Orange 50sqmm Aluflex Lead
- 1 x S9A Short Handle Earth End Clamp
- 1 x PVC Carrying Bag
- 1 x 4ft Top Section Pole
- 1 x 4ft Bottom Section Pole
- 1 x P331 Socket



P331 Socket



S9A Short Handle Earth End Clamp



S9B Short Taper Line End Clamp



Type A Terminal Plate



Arctic Orange Aluflex Lead



Top Section Pole



Bottom Section Pole



PORTABLE EARTHING EQUIPMENT FOR DISTRIBUTION LINE

[Click Here For Product Flyer](#)

DISTRIBUTION LINE EARTHING KITS

Operating Sockets P331

Item Code
DSSB-DLE-PEE-P331

Description:

Suitable for removal and fitting of LEL and S&E fuse insulator.

Product Benefits

- Lightweight Alloy
- Rugged construction
- Excellent anti-corrosive properties
- Adaptors available to convert operating poles types/fitting
- Precision machined



Earth End Clamps S9A

Item Code
DSSB-DLE-PEE-S9A

Description:

It is suitable for application to flat, clean, aluminium or copper bar. 12.7mm thick or 6.4 to 20mm round conductor or earth rod. The S9A is also available with short or long insulated handle, a hand applied cross pin, ring or tapered style operating screw.

Product Benefits

- Tested to 17.5kA for 3 seconds (25kA/1s)
- Solid construction to give extended service
- Proven service record used by ESI for over 40 years
- Light weight and good corrosion resistance
- No plated components



PORTABLE EARTHING EQUIPMENT FOR DISTRIBUTION LINE

DISTRIBUTION LINE EARTHING KITS

Line End Clamp S9B

Item Code
DSSB-DLE-PEE-S9B

The S9B is designed to hook onto the conductor to become self-supporting whilst the operating screw is tightened or loosened. S9B is available with a short, tapered ring type or ISO style operating screw and is suitable for a conductor range between 6.3mm and 38mm diameter.



Product Benefits

- Tested to 17.5kA for 2 seconds (25kA/1s)
- Solid construction for extended service
- Proven service record used by ESI for over 40 years
- Light weight and good corrosion resistance



Aluflex Earth Leads

Item Code	Cont. Current Rating	Short Circuit Rating	Size (sqmm)
DSSB-DLE-PEE-120EL	300A	20kA/1s	120sqmm
DSSB-DLE-PEE-50EL	15A	8.9kA/1s	50sqmm

Description:

Earth leads are produced from multi-stranded, commercially pure aluminium with an extruded PVC sheath, either in clear or opaque 'arctic' orange grade to protect the cable from damage.

Standard Distribution Line Earthing kits utilise 50sqmm and 120sqmm Aluflex leads, 120sqmm is used for the phase leads, and the down lead is generally 50sqmm. Leads are carefully manufactured at our factory and tested rigorously throughout the manufacturing process to ensure quality and performance.

Product Benefits

- High visibility
- Less expensive than copper
- Light and flexible
- Less vulnerable to copper theft
- Available in any lengths on request



PORTABLE EARTHING EQUIPMENT FOR DISTRIBUTION LINES

DISTRIBUTION LINE EARTHING KITS

Terminal Plates

Item Code
DSSB-DLE-PEE-TP

Description:

As an alternative to the cluster bar a terminal plate can be specified. There are several types of terminal plates available for mounting on to the operating pole.

Multi point aluminium plate, for interconnecting phase to clamp leads and down leads. Type A is also available with hook.



PVC Carrying Bag

Item Code
DSSB-TLE-PEE-BAG

Description:

Robust fabric reinforced PVC carrying bags can be supplied for the storage and handling of distribution line earthing kits.



These will provide protection for the equipment during transit as well as easing the transportation in the field and keeps the earth equipment clean and dry.

Quick release buckles or straps with Velcro fixings are supplied on the bags which also come with a black webbing shoulder strap.

Product Benefits

- Reinforced material
- Easy storage
- Quick release opening
- Carrying strap
- Different colours and sizes available



DISTRIBUTION LINE EARTHING KITS

Operating Pole Kit - Type 1

Item Code
DSSB-DLE-PEE-OPK1

The Operating Pole Kit comprises:

- 1 x Top Section Pole
- 3 x Intermediate Section Poles
- 1 x Primary Insulator Pole
- 1 x Bottom Section Pole
- 1 x Dispensing Head with PB Adapter
- 1 x Carry Bag

Description:

The Operating pole kit is suitable for applying a range of isolation earth leads to designated earth points and overhead cables.

Operating poles are manufactured from a lightweight resin-impregnated, electrical insulation grade fibre glass.

A number of intermediate poles can be selected to make up a longer length pole. The precision snap action joints and tight tolerances minimise flexure of the pole assembly. The lower pole is supplied with a on-grip to provide a guaranteed grip., and a rain shield is also fitted to keep this section dry.



PORTABLE EARTHING EQUIPMENT FOR DISTRIBUTION LINE

DISTRIBUTION LINE EARTHING KITS

Operating Pole Kit - Type 2

Item Code
DSSB-DLE-PEE-OPK2

The Operating Pole Kit comprises:

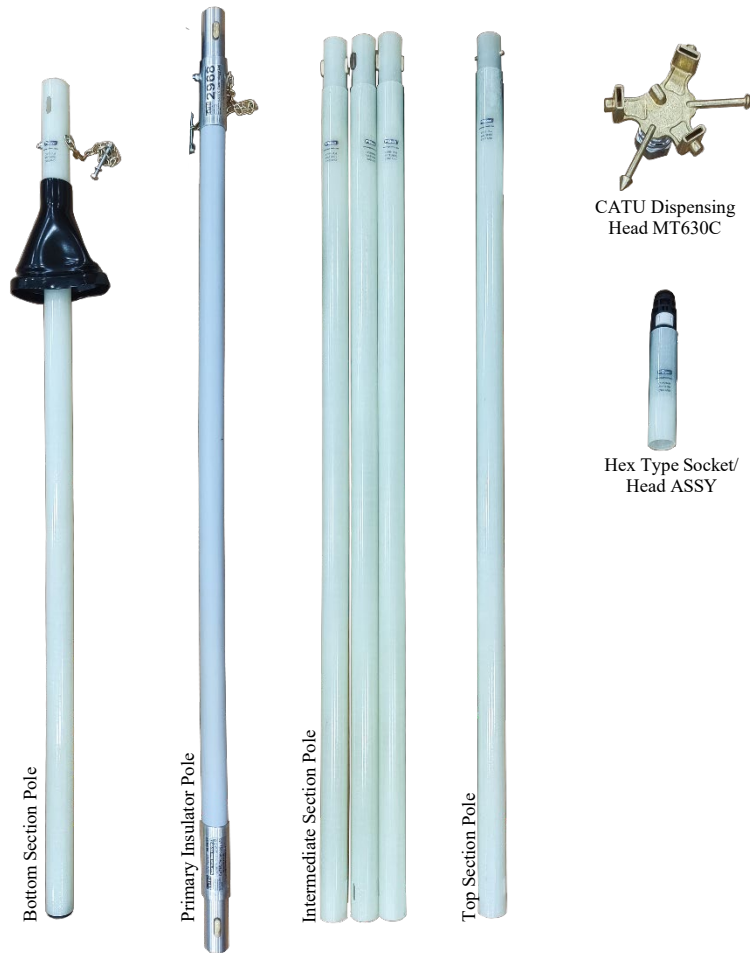
- 1 x Top Section Pole
- 3 x Intermediate Section Poles
- 1 x Primary Insulator Pole
- 1 x Bottom Section Pole
- 1 x Hex Type Socket/Head ASSY
- 1 x CATU Dispensing Head MT630C
- 1 x Carry Bag

Description:

The Operating pole kit is suitable for applying a range of isolation earth leads to designated earth points and overhead cables.

Operating poles are manufactured from a lightweight resin-impregnated, electrical insulation grade fibre glass.

A number of intermediate poles can be selected to make up a longer length pole. The precision snap action joints and tight tolerances minimise flexure of the pole assembly. The lower pole is supplied with a on-grip to provide a guaranteed grip., and a rain shield is also fitted to keep this section dry.



PORTABLE EARTHING EQUIPMENT FOR DISTRIBUTION LINE

DISTRIBUTION LINE EARTHING KITS

Operating Pole Kit - Type 2

Item Code
DSSB-DLE-PA3GTI

This set contains the following products :

- 2-section telescopic metal sticks L 5.45 m / 2.20 m
- Upper section of insulating stick
- Lower section of insulating stick
- Lower insulating stick extension, length 1,6 m
- Guide socket
- Cable reel with 3 x 10 m of copper braid, 35 mm² and an earthing clamp
- Soft plastic-coated canvas cover
- Hexagonal earthing rod 1 m Ø 18 mm

USAGE

The device enables a single linesman to :

- check for the absence of voltage
- earth and short-circuit overhead lines at heights of up to 11.50 m

ADVANTAGES

For work from the ground to heights up to 11.5 m.

TECHNICAL SPECIFICATIONS

- Max. allowable I_{sc} : 8 kA/1s
- Clamping range on cylindrical conductors from 3 mm to 22 mm in diameter (7 to 380 mm²)
- Telescopic metal sticks fitted with collars for quick, calibrated clamping, with integrated cleaning rings
- 3-section foam-filled fiberglass insulating sticks, type IEC 60855, with reinforced slot-in joints
- Optional insulating extension to reach 11.5m,
- Can fit the voltage tester to the bottom of the metal stick before earthing, (voltage tester optional)
- Removable clamp and stick bottom Nominal voltage up to 36kV.



PORTABLE EARTHING EQUIPMENT FOR DISTRIBUTION LINE

STANDARD

CEI 60855 / EN 50508 / IEC 61230 / DIN VDE680 / EDF-SPS n°CK 18-S-422

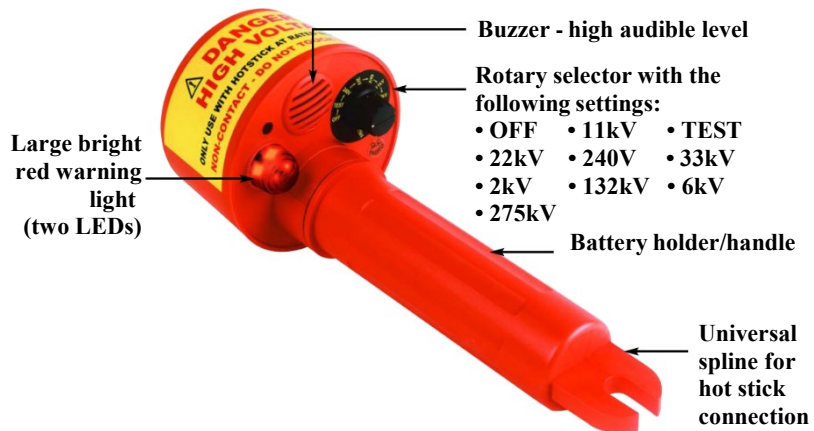
[Click Here For Product Flyer](#)

VOLTAGE DETECTOR

VOLTAGE DETECTOR

Non-Contact High Voltage Detector

Item Code
DSSB-SSE-PEE-278HP



Features:

- Protection class : IP65
- 3 LED indicators in a circle for easier viewing in any directions (360° LED indication)
- Voltage bright LED visual indication
- Sound indication
- Power source: 1.5V"C" type battery x 3
- Compatible with most hot sticks.
- Lightweight, robust & compact

Specifications:

Operating temperature : -10° ~ 50°C
 Storage temperature: -20°C ~ 60°C
 Humidity : 85%R.H @40°C
 Case height : 265mm
 Case width : 117mm
 Weight (batt incl.) : Approx. 600g
 Power source : 1.5 "C" x 3 alkaline batteries

VOLTAGE DETECTOR

VOLTAGE DETECTOR

Beacon Voltage Detector

Item Code	Voltage Operating Range	Threshold Voltage
DSSB-SSE-PEE-BVD12	5 - 12 kv	1.2 - 2.25 kV
DSSB-SSE-PEE-BVD36	10 - 36 kv	3.6 - 4.5 kV

Beacon is designed for both indoor and outdoor use as the circuitry is housed within a durable plastic moulded body.

With an audible alarm, and visible warning light, the Beacon is simple to use, and is suitable in poor visibility. The unit is a capacitive type and does not require a download, which greatly reduces the risk to the operator caused where fault protection can be grounded.

- Visible and audible detection.
- Suitable for fitting to standard operating poles head.
- Built-in test facility
- Battery operated (easy change)
- Rugged construction
- Voltage ranges 5-12kV and 10-36kV available
- Twin LED indication
- Lightweight
- Easy to use
- Supplied in a sturdy carry case

Supplied with

- Beacon Voltage Detector
- Durable Case
- Y Contact Probe
- Universal Castellated Adaptor
- Long Taper Operating Socket Adapter.
- 4 Feet Poles (Bottom & Top Section Poles)
- Universal Adapter Castellated Head For Top Pole



Universal Castellated Adaptor For Pole



VOLTAGE DETECTOR



VOLTAGE DETECTOR

VOLTAGE DETECTOR

WD6B/D3 Voltage Detector

Item Code
DSSB-SSE-PEE-WD6B/D3-5/12
DSSB-SSE-PEE-WD6B/D3-10/36
DSSB-SSE-PEE-WD6B/D3-50/140

WD6B/D3 is a robust construction, the circuitry is housed within the tubular body. The unit is suitable for fitting to any Pole section as a large range of adaptors is available.

Voltages are indicated with an audible and visual warning, and the light is bright enough so that it can be seen in poor visibility conditions.

Available in range of 5-12kV, 10-36kV and 50-140kV



DS/MS/VA Voltage Detector

Item Code
DSSB-SSE-PEE-DS/MS/VA

The DS/MS/VA comes in five main components-

- The Contact Probe can be supplied as a Mushroom, Pointer or "Y" probe.
- The Extension can be supplied to suit The relevant range of voltage.
- The Adaptor can be supplied at an angle of 90 or 600.
- The Main Body houses The voltage detector.
- The Handle provides suitable insulation from the voltage being tested, and provides storage for the main body when not in use.
- Range includes 3.3kV, 5-12kV & 10-36kV

Benefits

- Robust Construction
- Lightweight
- Fully interchangeable components
- Audible and Visual Warning



VOLTAGE DETECTOR

VOLTAGE TESTER

VOLTAGE TESTER

Prüfball SPB Digital



500 V- or 1000 V-LCD available



NEW Switchable load now also with CAT IV 1000 V

The Prüfball SPB digital combines modern microcontroller applications with approved features of the analog Prüfball - robust, precise and maintenance-free

- One-piece safety casing made of solid rubber, extremely voltage proof, unbreakable, dust- and waterproof
- Direct reading of all functions without pressed buttons
- Phase, phase sequence and continuity test,
- Additional load (RCD-tripping)
- Reliable phase sequence test by microcontroller analysis, possible with gloves
- Maintenance-free
- CAT IV 1000 V



VOLTAGE TESTER

Type	Item Code	Phase-/ phase sequence test	Continuity test	Additional load 30 mA-RCD-tripping	LCD value
SPB 500L 50-500 V	DSSB-RSE-VT-81422	Yes	Yes	Yes	Yes
SPB 1000L 50-1000 V	DSSB-RSE-VT-81423	Yes	Yes	Yes	Yes

VOLTAGE TESTER

VOLTAGE TESTER

Prüfball SPB Analog

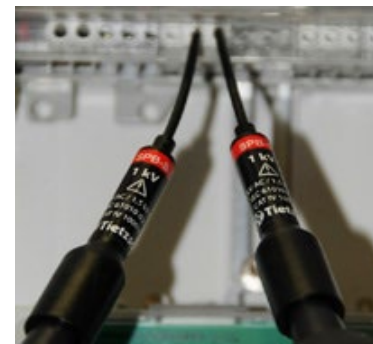


500 V or 1000 V measurement range available

NEW Direct voltage indication **without** push buttons! - CAT IV 1000V
Buttons only for additional load

The Prüfball SPB is the right voltage tester for operation in energy supply - robust, precise, maintenance-free.

- One-piece safety casing made of solid rubber, extremely voltage-proof, unbreakable dust- and waterproof
- Easy operation, clear indication
- Phase, phase sequence and continuity tester, RCD-tripping
- Reliable phase sequence test by microcontroller analysis, possible with gloves
- Without battery, maintenance-free lifelong
- CAT IV 1000 V



EN/IEC 61243-3
CAT IV 1000 V

VOLTAGE TESTER

Type	Item Code	Phase-/ phase sequence test	Continuity test	Additional load 30 mA-RCD-tripping	Vibration induction for load	Acoustic indication for load
SPB 500B 50-500 V	DSSB-RSE-VT-81411	Yes	Yes			
SPB 1000B 50-1000 V	DSSB-RSE-VT-81414	Yes	Yes			
SPB 500PR 50-500 V	DSSB-RSE-VT-81401	Yes	Yes	Yes	Yes	
SPB 1000PR 50-1000 V	DSSB-RSE-VT-81404	Yes	Yes	Yes	Yes	
SPB 500PRA 50-500 V	DSSB-RSE-VT-81402	Yes	Yes	Yes		Yes

VOLTAGE TESTER

Prüfball SPB-UB for subways



NEW

with switchable load to determine interference voltage - CAT IV 1000 V



EN/IEC 61243-3
CAT IV 1000 V

- One-piece safety casing made of solid rubber, extremely impact resistant, dust- and waterproof
- Highest safety against surge voltage CAT IV, 1000 V
- Direct voltage indication by red LED and backlighted LCD
- Integrated self-test by green LED and LCD
- Extension and magnet for easy testing at third rails



VOLTAGE TESTER

Type	Item Code	Self-test with green LED	Single pole voltage warning	Add. Load, to determine interference volt	LCD Value	Angled ext.	Magnet for rail
SPB 1000L-UB 50-1000V	DSSB-RSE-VT-81391	Yes	Yes	Yes	Yes		
SET SPB-UB 50-1000V	DSSB-RSE-VT-81390	Yes	Yes	Yes	Yes	Yes	Yes

DISCHARGED ROD

SOFT DISCHARGED ROD

HOT STICK

Item Code
DSSB-SSE-PEE-HS120 (M)
DSSB-SSE-PEE-HS500 (M)

- Can be attached to the 275 HP proximity Detectors and contact Capacitive Detectors 21 x HVD switch disconnectors.
- Universal "sunrise" head attachment to fit special tool fittings.
- Head Section rated at 100kV per 300mm (5min)
- Comes complete with sunrise fitting and fuse extractor
- 3 x 1.8 meter sticks; 1 x 1.2 meter head section.



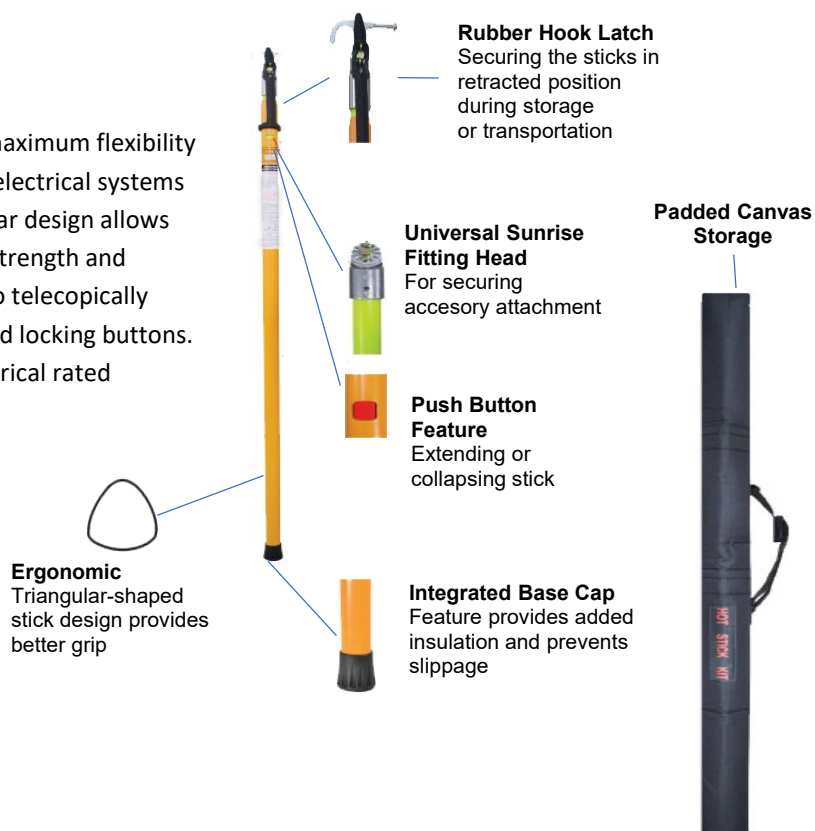
TELESCOPIC HOT STICK

Item Code
DSSB-SSE-PEE-HS175 (M)

The HS-175 Telescopic Hot Stick provides maximum flexibility and access for linesman needing to access electrical systems from a working distance. Its unique triangular design allows for easy operation without compromising strength and durability. The HS-175 has been designed to telescopically extend and retract into itself with integrated locking buttons. All sections are made from high grade electrical rated fiberglass.

APPLICATIONS

- Opening and closing switches
- Overhead switch operation
- Fuse replacement
- Lamp replacement
- Cleaning electrical fittings
- Installation of temporary clamps
- Tree trimming



DISCHARGED ROD



SOFT DISCHARGED ROD

HIGH VOLTAGE (HV) DISCHARGE STICK/ROD (GERMANY)

Item Code	Dimensions (cm) x Weight	Damping Resistor	Discharge Capacitor	kV
DSSB-EA-HVDR-EST35	50 (L) x 0.95kg	10K ohm	6 mfd	35
DSSB-EA-HVDR-EST50	136 (L) x 1.9kg	100K ohm	6 mfd	50
DSSB-EA-HVDR-EST75	156 (L) x 2.2kg	150K ohm	3 mfd	80
DSSB-EA-HVDR-EST100	176 (L) x 2.5kg	200K ohm	2 mfd	110
DSSB-EA-HVDR-EST150	208 (L) x 2.85kg	300K ohm	2 mfd	150

High Voltage discharge probe with built-in resistor ensures controlled and reduced discharge of live cables up to 35 kV. The pole is 50 cm long and weighs only 0.95 kg. Resistor is 10kohm and maximum capacitance is 6 uF. Avoid damage to the cables as a result of direct ground / short circuit. Safe discharging of visual grounding. PS: These rods are available in several sizes with voltages up to 150 kV.



EARTH DISCHARGE ROD (UK)

Item Code	Voltage
DSSB-EA-EDD-ER15	for use up to 15kV
DSSB-EA-EDD-ER 35	for use up to 35kV
DSSB-EA-EDD-ERR 15	for use up to 15kV
DSSB-EA-EDD-ERR 35	for use up to 35kV

***ER= without Discharge Limiting Resistor
 ***ERR= with Discharge Limiting Resistor

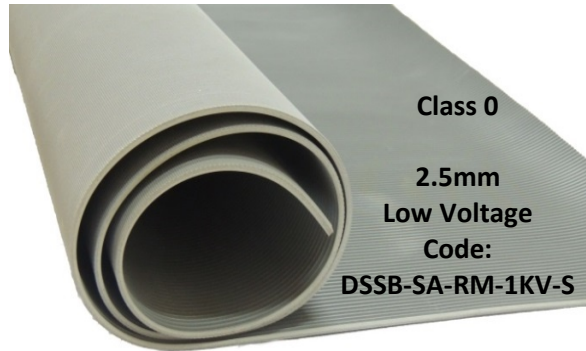
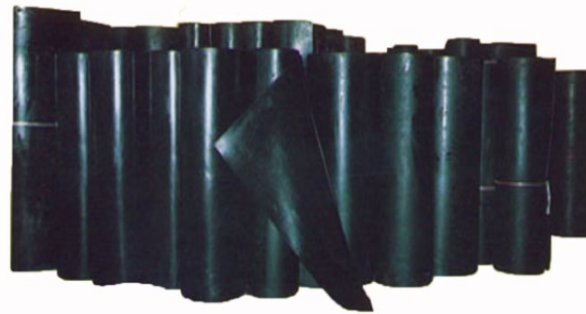


DISCHARGED ROD

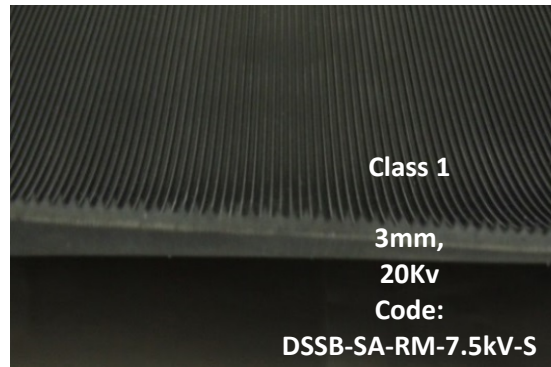
RUBBER MAT

SUBSTATION RUBBER MAT (Low Voltage)

Item Code	Class	Size
DSSB-SA-RM-1kV-S	0	10000mm x 915mm x 2.5mm
DSSB-SA-RM-7.5kV-S	1	10000mm x 915mm x 3.0mm



IEC Standard 61111:2009	Recommended Use Up to
Class 0	1.0kV
Class 1	7.5kV
Class 2	17.0kV
Class 3	26.5kV
Class 4	36.0kV



ADVANTAGE OF CLOTH IMPRESSION ARE:

- ~ Antislip both sides
- ~ Easier for rolling instruments/ equipments
- ~ Easier to clean than ribbed matting

Corrugated Matting

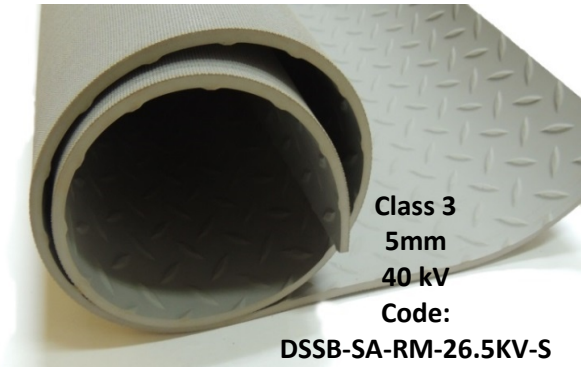
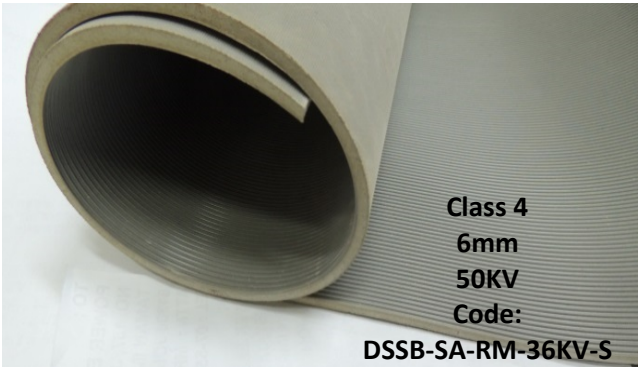
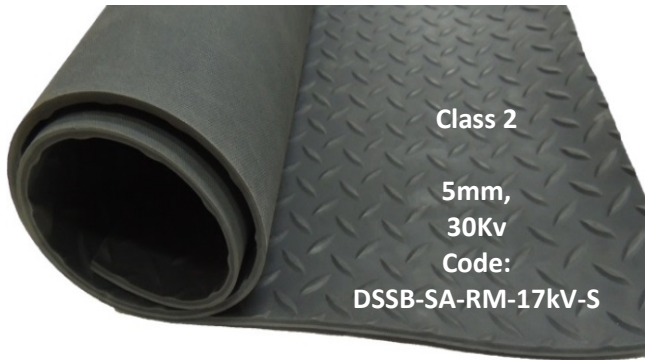
Corrugated with pointed corrugations or ribs running lengthwise. These mattings are used for flooring in many other places. Specially made for long lasting services. Won't curl, shrink or separate. Easy to clean substation. Power Plants, Electrical Installation switchboard.



RUBBER MAT

SUBSTATION RUBBER MAT (High Voltage)

Item Code	Class	Size
DSSB-SA-RM-17kV-S	2	6000mm x 5mm x 1000mm
DSSB-SA-RM-26.5kV-S	3	6000mm x 5mm x 1000mm
DSSB-SA-RM-36kV-S	4	6000mm x 6mm x 1000mm



RUBBER MAT

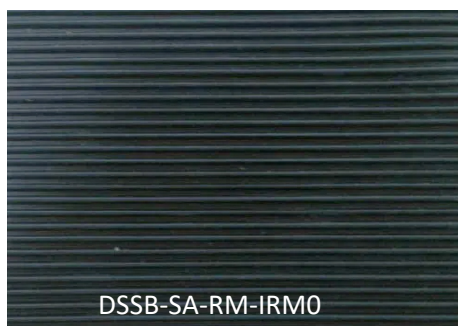
INSULATION RUBBER MAT

Item Code	Class	Size	Nominal Maximum Use Voltage
DSSB-SA-RM-IRM0	0	(3mm) Nominal Thickness x 1,000mm (1m) Width x 10,000mm (10m) Length/roll	1kV & Below
DSSB-SA-RM-IRM1	1	(5mm) Nominal Thickness x 1,000mm (1m) Width x 10,000mm (10m) Length/roll	7.5kV & Below
DSSB-SA-RM-IRM2	2	(9.5mm) Nominal Thickness x 1,000mm (1m) Width x 10,000mm (10m) Length/roll	17kV & Below

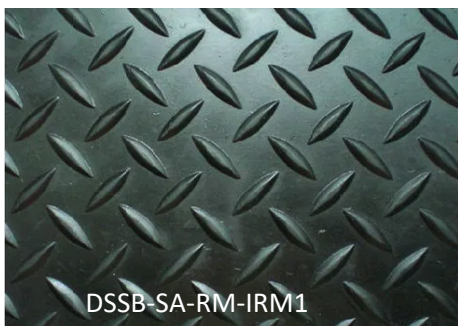
Purpose:

Switchboard matting is a non-conductive high-density rubber compound engineered to prevent electric shock around high voltage equipment. The non-conductive rubber compound creates an insulating barrier between the electrical source and the ground.

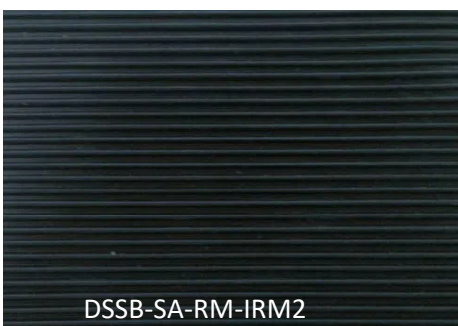
Material : Non-RoHS SBR / Reclaimed Natural Rubber Base Polymer



Top Surface : Anti Slip Corrugated
IEC 61111:2009 : CLASS 0,
Dielectric Test Voltage : 10kV ,
Nominal Maximum Use Voltage : 1kV & Below
Colour : Black
Test Certificate : Available (T)



Top Surface : Anti Slip Diamond
IEC 61111:2009 : CLASS 1,
Dielectric Test Voltage : 20kV ,
Nominal Maximum Use Voltage : 7.5kV & Below
Colour : Black
Test Certificate : Available (T)



Top Surface : Anti Slip Corrugated
IEC 61111:2009 : CLASS 2,
Dielectric Test Voltage : 30kV ,
Nominal Maximum Use Voltage : 17kV & Below
Colour : Black
Test Certificate : Available (T)/(S)

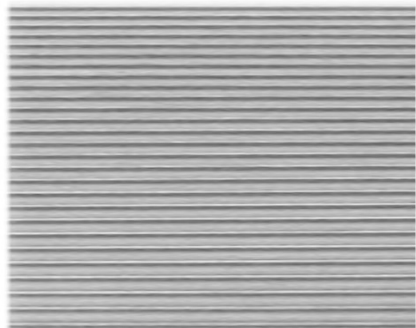
RUBBER MAT

NON CONDUCTIVE INSULATION RUBBER MAT

Item Code	Class	Size	Nominal Maximum Use Voltage
DSSB-SA-RM-NCIRM0	0	2.5mm Nominal Thickness x 915mm (3ft) Width x 10,000mm (10m) Length/roll	1kV & Below
DSSB-SA-RM-NCIRM1	1	3.0mm Nominal Thickness x 915mm (3ft) Width x 10,000mm (10m) Length/roll	7.5kV & Below
DSSB-SA-RM-NCIRM2-CSM	2	5.0mm Nominal Thickness x 1000mm (1m) Width x 6,000mm (6m) Length/roll	17kV & Below
DSSB-SA-RM-NCIRM2-DSM	2	5.0mm Nominal Thickness x 1000mm (1m) Width x 6,000mm (6m) Length/roll	17kV & Below
DSSB-SA-RM-NCIRM3	3	5.0mm Nominal Thickness x 1000mm (1m) Width x 6,000mm (6m) Length/roll	26.5kV & Below
DSSB-SA-RM-NCIRM4	4	6.0mm Nominal Thickness x 1000mm (1m) Width x 6,000mm (6m) Length/roll	36kV & Below
DSSB-SA-RM-NCIRM4-TE	4	7.0mm Nominal Thickness x 1000mm (1m) Width x 6,000mm (6m) Length/roll	36kV & Below

Purpose:

Switchboard matting is a non-conductive high-density rubber compound engineered to prevent electric shock around high voltage equipment. The non-conductive rubber compound creates an insulating barrier between the electrical source and the ground.



Model : **DSSB-SA-RM-NCIRM0**
 Top Surface : Anti Slip Corrugated
 Material : RoHS-2 Natural Rubber Base Polymer
 Nominal Thickness: 2.5mm
 IEC 61111:2009 : CLASS 0,
 Dielectric Test Voltage : 10kV , (10,000 V)
 Nominal Maximum Use Voltage : 1 kV (1,000 V)
 Colour: Grey
 Test Certificate : Available (T)(Si)(S)



Model : **DSSB-SA-RM-NCIRM1**
 Top Surface : Anti Slip Corrugated
 Material : RoHS-2 Natural Rubber Base Polymer
 Nominal Thickness : 3mm
 IEC 61111:2009 : CLASS 1,
 Dielectric Test Voltage : 20kV , (20,000 V)
 Nominal Maximum Use Voltage : 7.5kV (7,500 V)
 Colour: Black
 Test Certificate : Available (T)(Si)(S)

RUBBER MAT

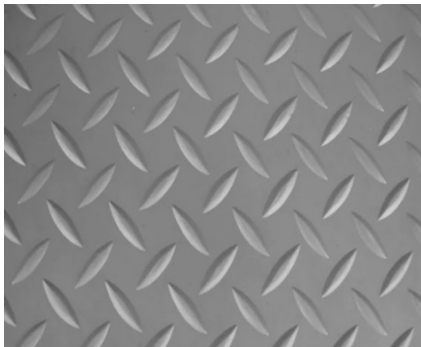
NON CONDUCTIVE INSULATION RUBBER MAT



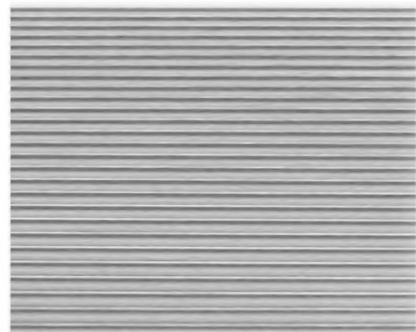
Model : DSSB-SA-RM-NCIRM2-CSM
 Top Surface : Anti Slip Corrugated
 Material : RoHS-2 Natural Rubber Base Polymer
 Nominal Thickness : 5mm
 IEC 61111:2009 : CLASS 2,
 Dielectric Test Voltage : 30kV , (30,000 V)
 Nominal Maximum Use Voltage : 17kV (17,000 V)
 Colour: Black
 Test Certificate : Available (T)(Si)(S)



Model : DSSB-SA-RM-NCIRM2-DSM
 Top Surface : Anti Slip Diamond
 Material : RoHS-2 Natural Rubber Base Polymer
 Nominal Thickness : 5mm
 IEC 61111:2009 : CLASS 2,
 Dielectric Test Voltage : 30kV , (30,000 V)
 Nominal Maximum Use Voltage : 17kV (17,000 V)
 Colour: Black
 Test Certificate : Available (T)(S)



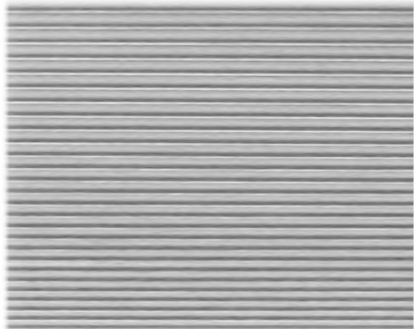
Model : DSSB-SA-RM-NCIRM3
 Top Surface : Anti Slip Diamond
 Material : RoHS-2 Natural Rubber Base Polymer
 Nominal Thickness : 5mm
 IEC 61111:2009 : CLASS 3,
 Dielectric Test Voltage : 40kV , (40,000 V)
 Nominal Maximum Use Voltage : 26.5kV (26,500 V)
 Colour: Grey
 Test Certificate : Available (T)(S)



Model : DSSB-SA-RM-NCIRM4
 Top Surface : Anti Slip Corrugated
 Material : RoHS-2 Natural Rubber Base Polymer
 Nominal Thickness : 6mm
 IEC 61111:2009 : CLASS 4,
 Dielectric Test Voltage : 50kV , (50,000 V)
 Nominal Maximum Use Voltage : 36kV (36,000 V)
 Colour: Grey
 Test Certificate : Available (T)(Si)(S)

RUBBER MAT

NON CONDUCTIVE INSULATION RUBBER MAT



Model : **DSSB-SA-RM-NCIRM4-TE**
(High Voltage Electrical Insulation Elastomer Mat)
Top Surface : Anti-Slip Corrugated
Material : RoHS-2 Thermoplastic Elastomer
Nominal Thickness : 7mm
IEC 61111:2009 : CLASS 4,
Dielectric Test Voltage : 50kV , (50,000 V)
Nominal Maximum Use Voltage : 36kV (36,000 V)
Colour: Grey
Test Certificate : Available (T)(Si)(S)

RUBBER MAT

EMERGENCY EQUIPMENT KIT

SAFETY RESCUE STICK

DELTA ELECTRICAL SAFETY HOOK

Node Size : 16mm
 Safety Hook Operating Diameter : 45cm
 • Able to withstand Static Load = ±145kg
 • Able to withstand AC voltage = 110kV

Application :
 Used for rescuing an injured workers (Electric Shock, Arc Flash etc.)
 It is used to pull the victim into the safe area.

* Rescue Hook come with 2 holding clip.

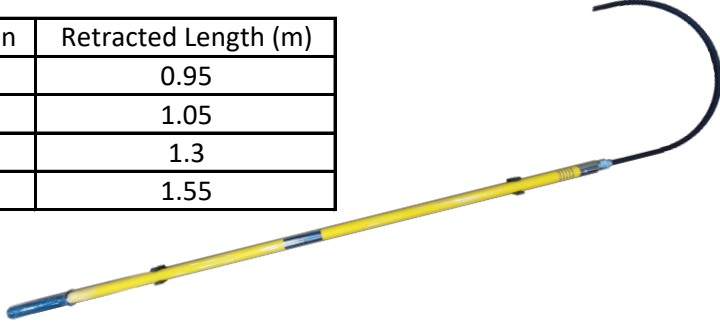
Single Section Type :

Model	Length (m)	Section
DSSB-SSE-RHF150	1.5	1
DSSB-SSE-RHF180	1.8	1
DSSB-SSE-RHF200	2	1



Joint Section Type :

Model	Length (m)	Section	Retracted Length (m)
DSSB-SSE-RHJ180	1.8	2	0.95
DSSB-SSE-RHJ200	2	2	1.05
DSSB-SSE-RHJ250	2.5	2	1.3
DSSB-SSE-RHJ300	3	2	1.55



Telescopic Type :

Model	Length (m)	Section	Retracted Length (m)
DSSB-SSE-RHTELE180	1.8	2	1.00
DSSB-SSE-RHTELE200	2	2	1.10
DSSB-SSE-RHTELE250	2.5	2	1.35
DSSB-SSE-RHTELE300	3	2	1.60



EMERGENCY EQUIPMENT KIT



An ISO 9001:2015 & 14001:2015 Company

DELTA SAMA JAYA SDN. BHD. (DSSB)

199901025376 (500276-W)

No. 23G & 23M, DSSB Building, Jalan Perdana 6/8, Pandan Perdana, 55300 Kuala Lumpur, Malaysia

Tel: +603-92824007, +603-92813778 Fax: +603-92870705

Email: (HQ): samajaya@substation.com.my, (Sales): sales@substation.com.my

Website: www.substation.com.my



NOTES:

Lined area for writing notes.

Delta Sama Jaya Sdn.Bhd.



DELTA SAMA JAYA
www.substation.com.my

We are constantly reviewing and updating our products,
for the latest information please call us on (+603) 9281 3778
or visit our website at: www.substation.com.my