



# STEEL STRUCTURES



**Tab 14**



**DELTA SAMA JAYA SDN. BHD. (DSSB)**

*(Company No. 500276-W)*

(Registered with Ministry of Finance, Tenaga Nasional Berhad (TNB), CIDB, KTMB, Telekom (TM), etc.)

# COMPANY PROFILE FOR STEEL STRUCTURE FABRICATION



No. 23G and 23M, DSSB Building,  
Jalan Perdana 6/8, Pandan Perdana, 55300 Kuala Lumpur.  
Tel : + 603 - 9282 4007, 03 - 9281 3778 Fax : + 603 - 9287 0705

**Website : [www.substation.com.my](http://www.substation.com.my)**

**and**

**Website : [www.cablecleat.com.my](http://www.cablecleat.com.my)**

E-mail : [samajaya@substation.com.my](mailto:samajaya@substation.com.my) (General)

E-mail : [sales@substation.com.my](mailto:sales@substation.com.my) (Sales)

## PRAI POWER PLANT



**Anchor Bolts with Foundation Embedded Plate**



**Another view of Anchor Bolts, Hex.nut & Flat washer**



**Anchor Bolts and Sleeve Fabrications**



**I Beam for Jacking Post**



**Anchor Bolts with Sleeves and Embedded Plate**



**Anchor Bolts with Foundation Embedded Plate**

# PRAI POWER PLANT



**Another view of anchor bolts**



**Anchor bolts with welded plates**



**Different types of Anchor bolts**



**Anchor Bolts for Turbines**

# MELAKA 275kV SUBSTATION

**HDG Steel member ready for delivery**

## 132kV SUBSTATION GANTRY TOWER



**Assembled Steel for Customer Inspection**



**Front View of 132kV Substation Gantry Tower And Gantry Beam**



**Fabrication of Steel Member in Progress**



**Punching of Holes at Steel Member in Progress**

## HUTAN MELINTANG 132kV SUBSTATION



**Circuit Breaker steel support structure**

## THAZI 230kV SUBSTATION, MYANMAR



**Assembled Towers and Beams for customer inspection**



**Fabrication of different types of Towers and Beams**



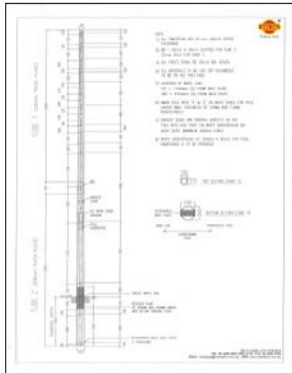
**Fabrication of equipment steel structure support**

## MEIKTILA 230kV SUBSTATION, MYANMAR



**Fabrication of different types of Towers and Beams**

# STEEL POLE

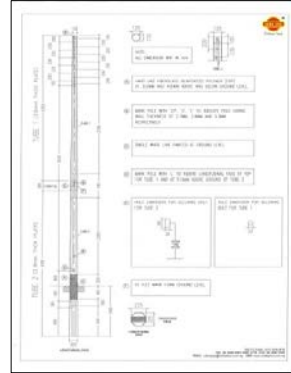


**Advantages of our Galvanised Steel Poles**

- Minimal maintenance & inspection
- Light in weight thus reduces handling and installation costs
- Does not crack & split during transportation
- Recyclable
- Durable

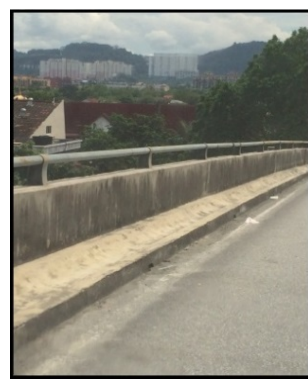
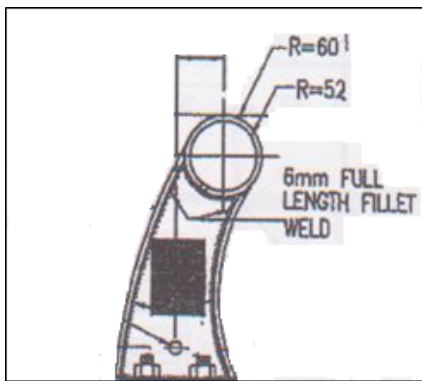
**Technical Specification of Standard Poles**

Code	Height (m)	Top Section (mm)	Top Section (mm)	Top Section (mm)	Top Section (mm)	Top Section (mm)	Top Section (mm)	Top Section (mm)	Top Section (mm)
SP-100	10.0	100	100	100	100	100	100	100	100
SP-120	12.0	120	120	120	120	120	120	120	120
SP-150	15.0	150	150	150	150	150	150	150	150
SP-180	18.0	180	180	180	180	180	180	180	180
SP-210	21.0	210	210	210	210	210	210	210	210
SP-240	24.0	240	240	240	240	240	240	240	240
SP-270	27.0	270	270	270	270	270	270	270	270
SP-300	30.0	300	300	300	300	300	300	300	300



# Parapet Guardrail Post

**Product Code**  
DSSB-MSC-PRP-HDG



## LAMP POST



## ABC POLES



## LATTICE STEEL STRUCTURES





## TUBULAR STEEL STRUCTURES



## TELECOMMUNICATION MONOPOLE



# MONOPOLE TREE



# HIGH TENSION TRANSMISSION MONOPOLE





®

# DELTA SAMA JAYA SDN. BHD. (DSSB) (Reg. No: 500276-W)

No. 23G & 23M, DSSB Building, Jalan Perdana 6/8, Pandan Perdana, 55300 Kuala Lumpur, Malaysia  
Tel: +603-92824007, +603-92813778 Fax: +603-92870705  
Email: (HQ): samajaya@substation.com.my, (Sales): sales@substation.com.my  
Website: www.substation.com.my, www.cablecleat.com.my  
GST Registration No: 001134116864

*Redefining Supply*  
An ISO 9001:2015 & 14001:2015 Company



## NOTES:

---

---

---

---

---

---

---

---

---

---

---

---

---

---

---

---

---

---

---

---

---

---

---

---

---

---

# Delta Sama Jaya Sdn.Bhd.



We are constantly reviewing and updating our products,  
for the latest information please call us on (+603) 9281 3778  
or visit our website at: [www.substation.com.my](http://www.substation.com.my)