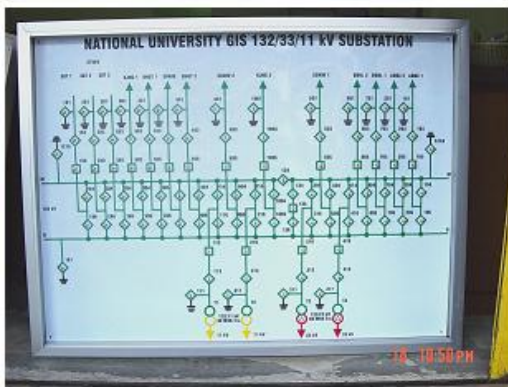


SIGNAGE & SAFETY ACCESSORIES



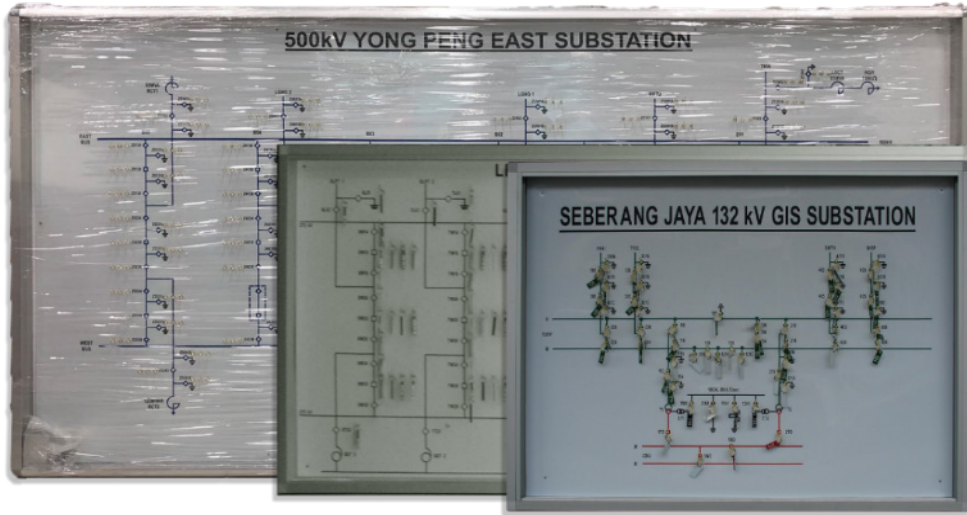
Tab 18



Redefining Supply
An ISO 9001 &
14001 Company

SUBSTATION MIMIC KEYBOARD

SUBSTATION MIMIC KEYBOARD



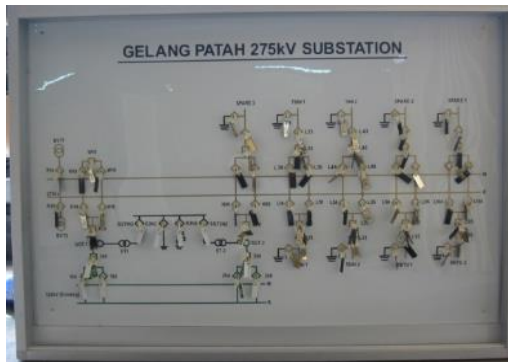
Item Code	Size
DSSB-SSA-SMK343	3' x 4' x 3"
DSSB-SSA-SMK363	3' x 6' x 3"



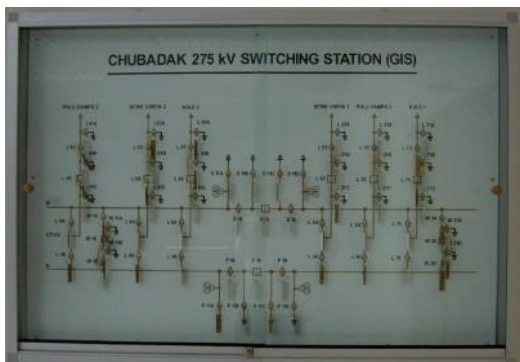
Power Plant



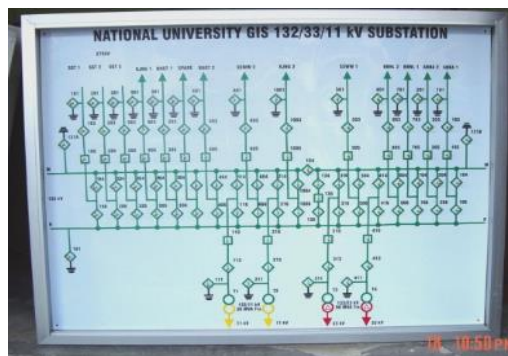
500kV



275kV (AIS)



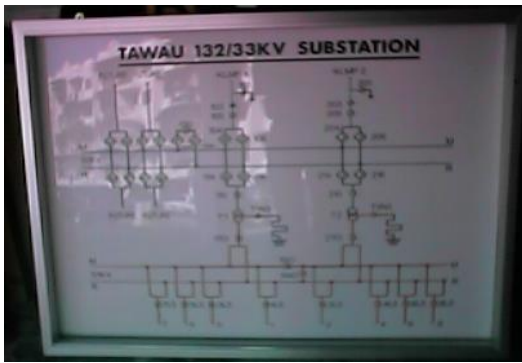
275kV (GIS)



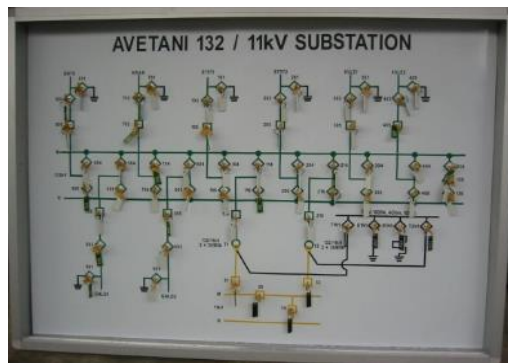
132/33/11kV (GIS)

SUBSTATION MIMIC KEYBOARD

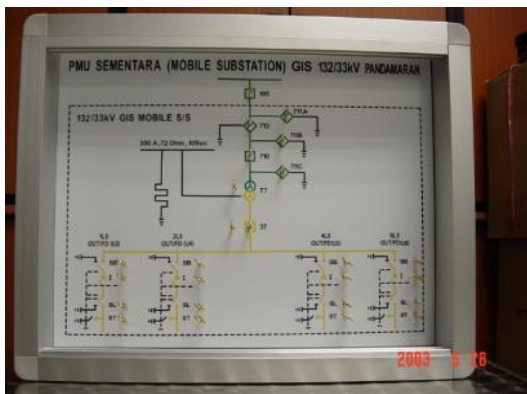
SUBSTATION MIMIC KEYBOARD



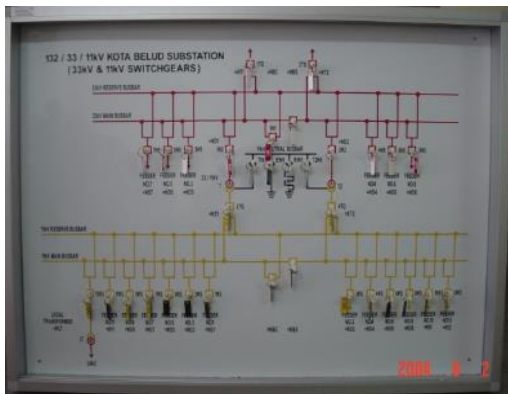
132/33kV (AIS)



132/11kV (AIS)



Mobile Substation



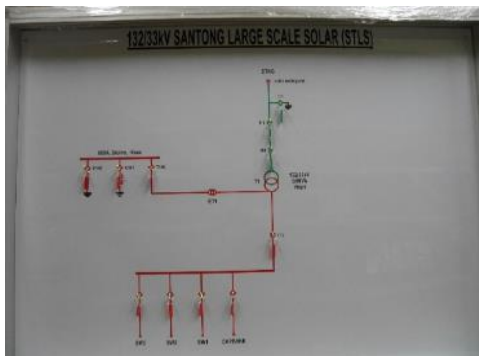
33kV & 11kV



33kV



11kV



Solar Plant



Fitting Accessories
for 3' x 6'
Mimic Board



Fitting Accessories
for 3' x 4'
Mimic Board

SUBSTATION MIMIC KEYBOARD

TOOL CABINETS

Item Code	Size
DSSB-SSA-TC348	3' x 4' x 8"



33kV S/S (AIS)



33kV S/S (GIS)



FITTING ACCESSORIES FOR TOOLS BOX



Redefining Supply
An ISO 9001 &
14001 Company

SIGNAGES/ LABEL/ NAME PLATE

**SIGNAGES / LABEL / NAME PLATE
(PVC / ALUMINIUM / STAINLESS STEEL)**



Photo A
(400mm x 600mm (aluminium))



Photo B
(210mm x 297mm (aluminium & Steel))



Photo C
(900mm x 1200mm (alucarbon))



Photo D
(210mm x 297mm (aluminium))



Photo E
(500mm(L) x 400mm(H))



Photo F
(297mm x 420mm(Alucarbon))

SIGNAGES / LABEL / NAME PLATE

**SIGNAGES / LABEL / NAME PLATE
(PVC / ALUMINIUM / STAINLESS STEEL)**



Photo G
(100mm diameter (Acrylic))



Photo H
(1200mm x 180mm (Alucarbon))



Photo I
(75mm x 200mm (Aluminium))



Photo J
(125mm x 200mm (Acrylic))



Photo K
(20mm x 60mm (Aluminium))

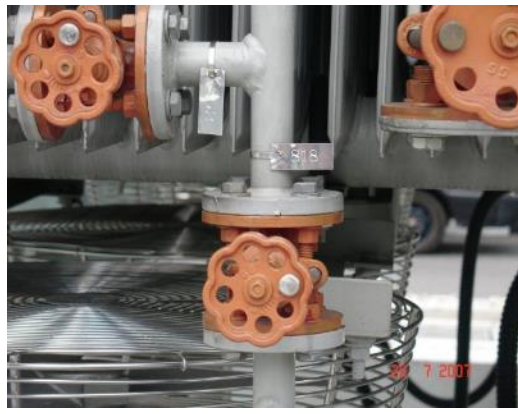


Photo L
(20mm x 75mm (Stainless Steel))

SIGNAGES / LABEL / NAME PLATE

**SIGNAGES / LABEL / NAME PLATE
(PVC / ALUMINIUM / STAINLESS STEEL)**



Photo M
(Signboard 550mm x 900mm(Alucarbon))



Photo N
(75mm x 200mm (Stainless Steel))



Photo O
(150mm x 150mm (Stainless Steel))



Photo P
(300mm x 420mm (Aluminium))



Photo Q
(210mm x 297mm (Aluminium))



Photo R
(900mm x 1200mm (Alucarbon))

SIGNAGES / LABEL / NAME PLATE

**SIGNAGES / LABEL / NAME PLATE
(PVC / ALUMINIUM / STAINLESS STEEL)**



Photo S
(210mm x 297mm (Aluminium))



Photo T
(Stainless Steel)



Photo U
(210mm x 297mm (Alucarbon))



Photo V
(600mm x 900mm (Alucarbon))



Photo W
(75mm x 100mm (Acrylic))



Photo X
(125mm x 200mm (Acrylic))

SIGNAGES / LABEL / NAME PLATE

**SIGNAGES / LABEL / NAME PLATE
(PVC / ALUMINIUM / STAINLESS STEEL)**



**Photo Y
(Sticker)**



**Photo Z
(150mm x 300mm(Sticker))**



**Photo AA
(150mm x 300mm (Sticker))**



**Photo AB
(Sticker)**

SIEMENS		02/054473	AMT 300	CT	209 159
C73263 - A92 - B206		$I_{th} (40-3s) \text{ kA}$	$(300/480/1050/850) \text{ kV}$		
EC 60044-1 / BS 3938		$I_{dyn} (100) \text{ kA}$	E	50 Hz	ext. 120%
CORE 1	CORE 2	CORE 3	CORE 4		
A $\frac{1200}{1}$	A $\frac{1200-600}{1}$	A $\frac{4000}{1}$	A $\frac{4000}{1}$	A _____	A _____
		CL X	CL X		
VA 30	VA 30 - 15	$I_0 < 10 \text{ mA at } V_k/2$		$I_0 < 10 \text{ mA at } V_k/2$	
CL 5P 20	CL 0.5 FS10	$V_k \geq 600 \text{ V}$	$V_k \geq 600 \text{ V}$		
		$R_{ct} < 6 \Omega$	$R_{ct} < 6 \Omega$		
secondary terminals					
1S1 - 1S2	2S1-2S3 2S2	3S1 - 3S2	4S1 - 4S2		

Photo AC

SIGNAGES / LABEL / NAME PLATE

**SIGNAGES / LABEL / NAME PLATE
(PVC / ALUMINIUM / STAINLESS STEEL)**

**+RA.27=WXD6
BUS COUPLER NO.6**

Photo AD

**RAWANG NO.2
132KV O/H FEEDER
CONTROL**

Photo AE

**=WBE-J
BUS COUPLER**

Photo AF

**=T1A1-J
30MVA 132/11KV
TRANSFORMER NO.1**

Photo AG

**=WLE 3-J
SRI GADING LINE NO.1**

Photo AH

**EO 9+V
KL NORTH
132KV O/H FEEDER**

Photo AI

**CAUTION:
PLEASE ENSURE THAT CT
SECONDARY WINDINGS ARE
LINKED BEFORE THE TEST
PLUG IS INSERTED INTO
THE TEST BLOCK**

Photo AK

NEUTRAL EARTHING RESISTOR
MAKE : MAHKOTA TECH. SDN BHD
RATED VOLTAGE : $33/\sqrt{3}$ (INS. CLASS 25KV)
RATED CURRENT : 1600A
RATED DUTY : 10 SEC
RATED RESISTANCE : 12 OHMS
APPROX. WEIGHT : 2100KG
MANUFACTURED : 1997

Photo AJ

**132 / 11KV
REMOTE TAP CHANGE
CONTROL PANEL TX.1**

Photo AJ

**R.T.C.C.PANEL
90MVA 132/33KV
TRANSFORMER NO.1**

Photo AK

**OIL TEMP
INDICATOR**

Photo AL

**AMMETER
300 / 600 / 1A**

Photo AM

4W10

Photo AN

SIGNAGES / LABEL / NAME PLATE

**SIGNAGES / LABEL / NAME PLATE
(PVC / ALUMINIUM / STAINLESS STEEL)**

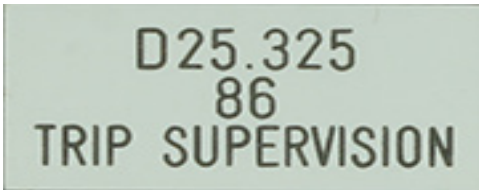


Photo AO

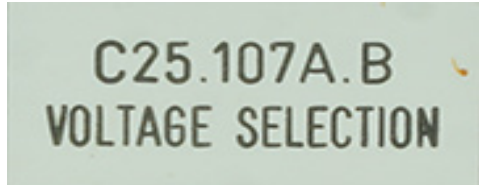


Photo AQ



Photo AS

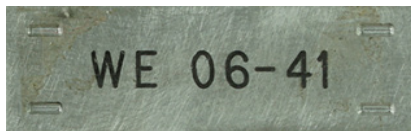


Photo AU



Photo AW

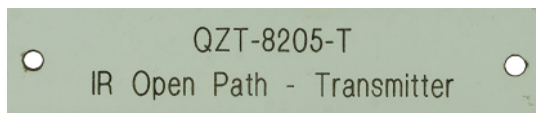


Photo AY

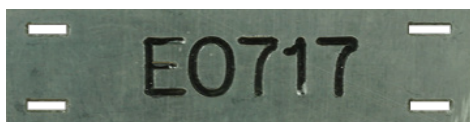


Photo BA



Photo BB



Photo AP



Photo AR



Photo AT



Photo AV



Photo AX

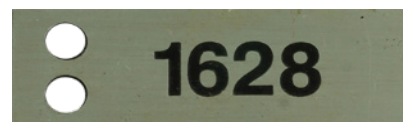


Photo AZ

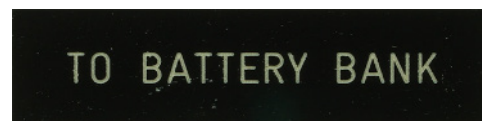


Photo BC

SIGNAGES / LABEL / NAME PLATE

**SIGNAGES / LABEL / NAME PLATE
(PVC / ALUMINIUM / STAINLESS STEEL)**

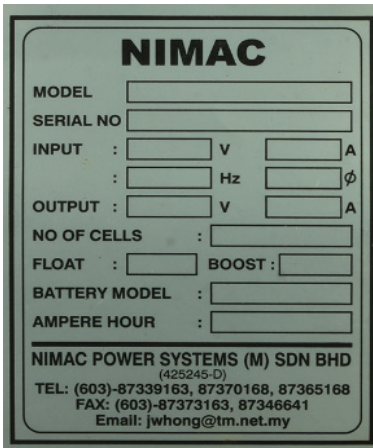


Photo BD



Photo BG



Photo BI



Photo BK

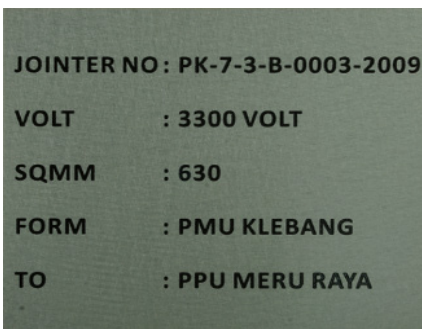


Photo BM

ABB Manufacturing Sdn. Bhd. Malaysia		OVERALL SERIAL NO : 992714530079	
Circuit-breaker type	LT8145D1/B	Operating device type	BLK222
No.	8421940	No.	8421973
Order	LT 8018	Order	LT 8018
Voltage	145 kV	Breaking current	31.5 kA
Insulation level	650/275 kV	DC-component	51 %
Frequency	50 Hz	First-pole-to-clear factor	1,5
Normal current	3150 A	Making current	79 kA
Gas pressure SF ₆	abs	Short-time current	3 s 31.5 kA
Max. working pressure	0,90 MPa	Mass total	1060 kg
Filling 20°C	0,50 MPa	Mass of gas	5 kg
Signal 20°C	0,45 MPa	Standard	IEC 56
Blocking 20°C	0,43 MPa		
Volume per pole	53 l	Year of manufacture	1998

Photo BE

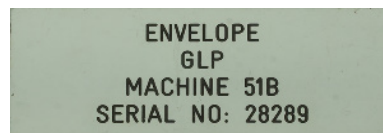


Photo BF

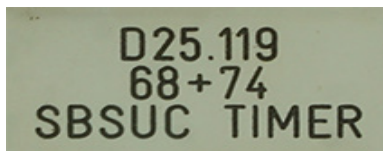


Photo BH

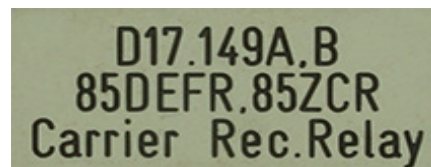


Photo BJ



Photo BL

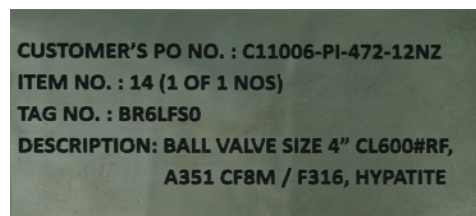


Photo BN

SIGNAGES / LABEL / NAME PLATE

PHASE PLATE

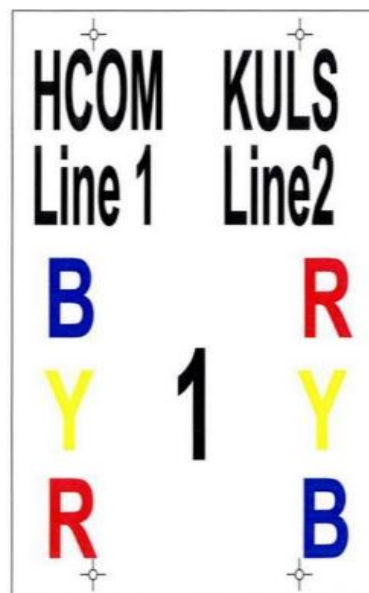
Item Code	Colour	Size (Inch x Inch)
DSSB-SA-PPALB-DBL	Blue	6" x 6"
DSSB-SA-PPALB-R	Red	
DSSB-SA-PPALB-Y	Yellow	
DSSB-SA-PPALB-DBL1212	Blue	12" x 12"
DSSB-SA-PPALB-R1212	Red	
DSSB-SA-PPALB-Y1212	Yellow	



TRANSMISSION TOWER LABELS

Item Code
DSSB-SA-TTL

Label Size: 295mm (Width) x 370mm (Height)
 Background Colour: White.
 Phase Indication: Embossed. Colour based on Phase Colours.
 (R=Red Y=Yellow B=Blue)
 Hole Size : 12mm Diameter
 Material: Aluminium Plate



SIGNAGES / LABEL / NAME PLATE

CPR POSTER






Item Code
DSSB-SA-CPR2030N-DRCAB

CARDIO-PULMONARY RESUSCITATION **CPR**

Resusitasi Kardio-Pulmonari

***Prinsip-Prinsip Kecemasan dan Rawatan untuk Kejutan Elektrik**
Emergency Action Principles and Treatment for Electric Shock

D R C A B

 <p style="font-size: 2em; font-weight: bold; color: red;">D</p>	<p>Bahaya</p> <p>- DANGER</p> <ol style="list-style-type: none"> Pastikan keselamatan diri sendiri, alihkan bahaya atau mangsa. Ensure own safety, remove danger or victim.
 <p style="font-size: 2em; font-weight: bold; color: red;">R</p>	<p>Tindak Balas</p> <p>- RESPONSE</p> <ol style="list-style-type: none"> Periksa tindakbalas mangsa. Check for response. Jika tidak sedar, minta bantuan/panggil ambulans. If unresponsive, call for help/ambulance.
 <p style="font-size: 2em; font-weight: bold; color: red;">C</p>	<p>Tekanan</p> <p>- COMPRESSIONS</p> <ol style="list-style-type: none"> Mulakan 30 tekanan dada sedalam 1 1/2 hingga 2 inci, diikuti dengan 2 hembusan. Tekan kuat dan laju. Begin 30 chest compressions followed by 2 breaths. Compress sternum 1 1/2 to 2 inches. Push hard and fast. Ulangi CPR dengan nisbah 30:2 sehingga bantuan tiba atau mangsa pulih. Continue CPR at 30:2 cycles until help arrives or victim recovers.
 <p style="font-size: 2em; font-weight: bold; color: red;">A</p>	<p>Saluran Pernafasan</p> <p>- AIRWAY</p> <ol style="list-style-type: none"> Baringkan mangsa. Position victim on his/her back Buka saluran pernafasan - dongak kepala dan angkat dagu (angkat dagu tanpa miringkan kepala jika dijangkit kerosakan leher) Open Airway - Head Tilt Chin Lift (Use throat if neck injury suspected)
 <p style="font-size: 2em; font-weight: bold; color: red;">B</p>	<p>Pernafasan</p> <p>- BREATHING</p> <ol style="list-style-type: none"> Periksa pernafasan - lihat, dengar dan rasa selama 10 saat. Check breathing - look, listen & feel for 10 seconds. Jika tidak bernafas, beri 2 hembusan. If not breathing, give 2 breaths.

JIKA BERLAKU KECEMASAN HUBUNGI 999

1. DSSB-SA-CPR2030N-DRCAB

SIGNAGES / LABEL / NAME PLATE



Redefining Supply
An ISO 9001 &
14001 Company

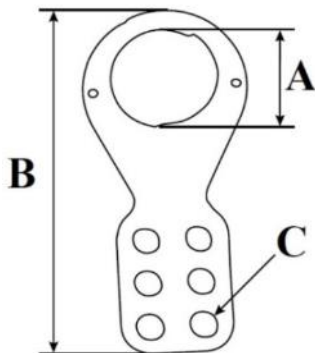
SAFETY LOCKOUT TAGOUT

PERSONNEL LOCKOUT TAGOUT

VINYL COATED HASP

Item Code	A	B	C
VH-25	25mm	113mm	10mm
VH-39	39mm	127mm	10mm

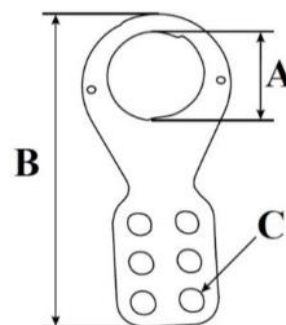
- Die cut section made from solid Heavy gauge steel plate.
- Vinyl coated at the lower portion.
- Inner dia size : 25 mm and 39mm
- Each hasp accomodates up to six locks



ELECTRONIC PLATED HASP

Item Code	A	B	C
VH-E25	25mm	112mm	11mm
VH-E39	39mm	127mm	11mm

- Die Cut section made from solid Heavy gauge steel plate.
- Joined with Chrome plated aluminium rivet
- Electroplated body
- Inner dia size : 25 mm and 39 mm
- Each hasp accomodates up tp six locks.

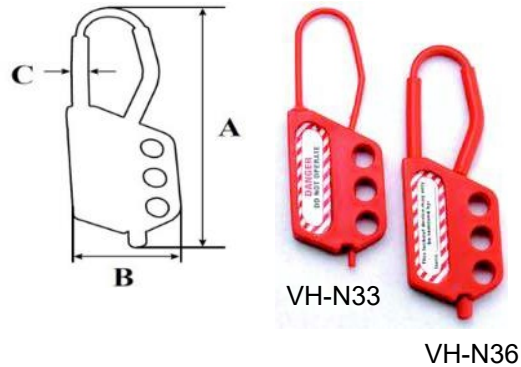


PERSONNEL LOCKOUT TAGOUT

NYLON HASP

Item Code	A	B	C
VH-N33	110mm	40mm	3mm
VH-N36	114mm	40mm	6mm

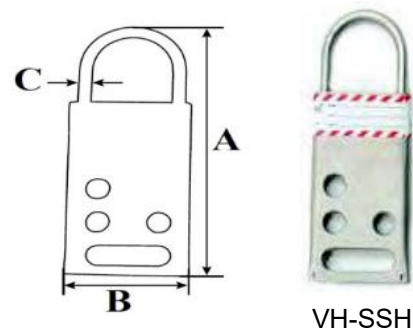
- Injection molded one piece construction.
- Made from Nylon material.
- Can be applied to any instrument for locking out.
- Each hasp accommodates up to three locks.



STAINLESS STEEL HASP

Item Code	A	B	C
VH-SSH	112mm	45mm	5mm

- Material : Stainless Steel.
- Corrosion resistant.
- Holds up to 6 locks.



LOCKOUT TAGS

- Made from superior grade 0.7mm Polyurethane super white sheet.
- Supplied with golden ring for extra strength for holding padlock.
- Tags meets OSHA standards.
- They withstand moisture / grease & dirt.
- Size : 80mm x 140mm with chamfered top corners.



V-T02

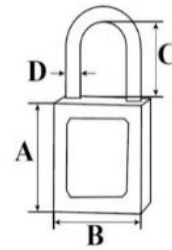
PERSONNEL LOCKOUT TAGOUT

PERSONNEL LOCKOUT TAGOUT

PREMIER SAFETY PADLOCK

Item Code	Description	A	B	C	D
V-PLSP-KD	Key Different	45mm	38mm	40mm	6mm
V-PLSP-KD+M	Master Key	45mm	38mm	46mm	6mm

- Compliance with OSHA "one employee, one lock, one key" directive.
- Lightweight Special Re-enforced fiber bodies are durable and non-conductive.
- Customize your system with choice of five bright colors.
- Extra clearance steel shackle fits a wide range of lockout applications.
- Ball-bearing locking resists prying.
- Durable, lightweight, non-conductive fiber reinforced lock body permanent write-on labels.
- Key retaining-ensures that padlock is not left unlocked.



V-PLSP-KD

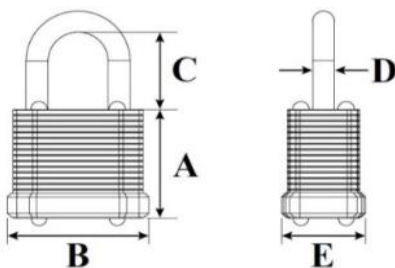


V-PLSP-KD+M

STEEL LAMINATED PADLOCK

Item Code	A	B	C	D	E
V-PRS-3A	33mm	43mm	47mm	6mm	25mm

- Maximum security laminated padlocks are made for tough lockout situation.
- Shackle is made of special metal alloy for increase durability against cutting, prying and twisting.
- 5-pin tumber cylinders for additional keying options.
- Padlocks are individually plated for improved corrosion resistance within the lock.
- Set with 3 nos with same key.

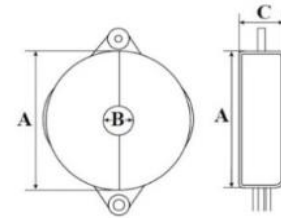


MECHANICAL LOCKOUT

GATE VALVE LOCKOUT

Item Code	Hand Wheel Dia.	A	B	C
V-02-GVL	1"-2 ^{1/2} "(25 to 63.5mm)	77mm	19mm	38mm
V-04-GVL	2 ^{1/2} "-5"(63.5 to 127mm)	142mm	38mm	43mm
V-06-GVL	5"-6 ^{1/2} "(127 to 165mm)	175mm	63mm	50mm
V-08-GVL	6 ^{1/2} "-10"(165 to 254mm)	265mm	87mm	63mm
V-10-GVL	10"-13"(254 to 355mm)	368mm	102mm	75mm

- Virtually indestructible valve covers.
- One locked, they rotate freely around the hand wheel & prevent the valve wheel from being turned.
- The strong polyurethane plastics make them resistant to cracking and abrasion.
- They are resistant to extreme weather and temperature conditions.
- Available in 5 sizes (Red color) other colors available on request. minimum quantity applicable.



ADJUSTABLE GATE VALVE LOCKOUT

- This versatile valve hand wheel lockout adjusts to fit valve hand wheels from 25.4mm to 165mm (1" to 6.1/2") diameter.
- Manufactured from durable polypropylene and can withstand temperature changes from -45°C to 182 °C



V-AGV



MECHANICAL LOCKOUT

MECHANICAL LOCKOUT

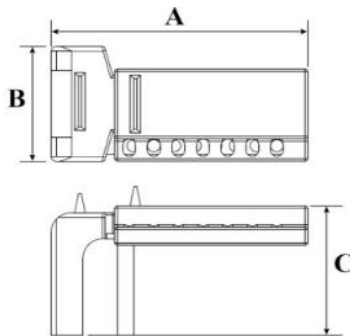
BALL VALVE LOCKOUT

Item Code	Hand Wheel Dia	A	B	C
V-BV 01	$\frac{3}{8}$ " - $1\frac{1}{2}$ "	165mm	78mm	85mm
V-BV 02	$1\frac{1}{2}$ " - $2\frac{1}{2}$ "	208mm	78mm	130mm
V-BV 03	2" - 8"	302mm	100mm	200mm

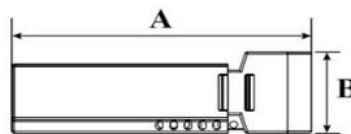
- Made from Special grade of PVC.
- Virtually indestructible valve covers.
- Once locked, it prevents handle from being turned.
- Resistant to cracking and abrasion.
- They are resistant to extreme weather and temperature conditions.
- Available in 3 sizes.



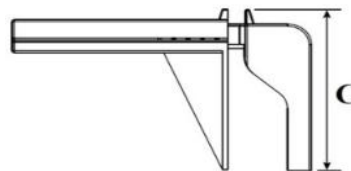
V-BV 01



V-BV 02



V-BV 03

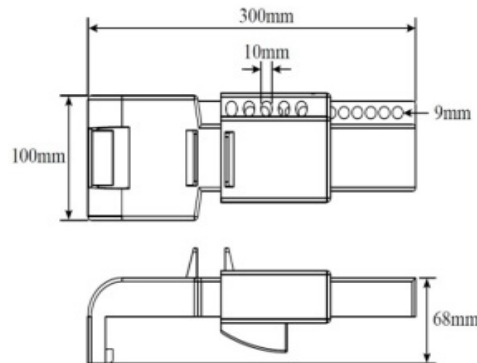


MECHANICAL LOCKOUT

MECHANICAL LOCKOUT

BUTTERFLY VALVE LOCKOUT

- For all types of butterfly valves available internationally.
- The strong polyurethane plastics make them resistant to cracking and abrasion.
- They are resistant to extreme weather and temperature conditions.



UNIVERSAL VALVE LOCKOUT

- The Universal Lockout device is a modular system which enables you to lockout valves of different types and sizes.
- No other device offers such flexibility and security.



MULTIPURPOSE CABLE LOCKOUT

- Ideal for multiple control panel and gate valve lockouts.
- Scientifically made moulded section of PVC.
- 2 meters galvanized steel cable, withstand more than 100 kg weight.
- Accommodates up to 4 locks.



V-UML

MECHANICAL LOCKOUT

ELECTRICAL LOCKOUT

MINIATURE BREAKER LOCKOUT

- Safe & Effective method for locking out Miniature Circuit Breaker lockout.
- Push button installation - Does not require any tool for installation.
- Can be applied on all single / Multiple Breakers.
- A Padlock should be applied to Lockout the MCB.



PIN CBL SET (3 Different types)



PIN IN CBL - (3pcs)



PIN OUT CBL - (3pcs)



PIN OUT WIDE CBL - (3pcs)



UNIVERSAL CIRCUIT BREAKER LOCKOUT

- Safe & Effective method for locking out Circuit Breakers.
- With Adjustable Screw.
- It can be used on single & multi - pole breakers.
- Handle size from 7.5mm to 15mm tall and 4mm to 8.9mm thick.



ELECTRICAL LOCKOUT

LARGE CIRCUIT BREAKER LOCKOUT

- Locks out a wide range of three phase Circuit Breakers (227V and above).
- Fits on lever of Circuit Breaker up to 3" wide & 0.9" thick.
- Handy Device : make it easy to secure the large Circuit Breakers at any workplace.
- Rugged Stainless steel / PVC Constructions.
- Corrosion resistant.
- Easy installation simply turn the screw with the help of screw driver into the Circuit breaker handle and add your own Padlock and Tag.



V-LCB

COMBO CIRCUIT BREAKER & FUSE LOCKOUT

- Five type of lockouts for different types of Circuit Breakers and Fuse Holder.
- Application : Clamp onto the Circuit Breaker toggle in the OFF position, using small screwdriver and the set screw in the device.
- Place a padlock through the hole to prevent access to the set screw.



V-CBF-COMCO 5

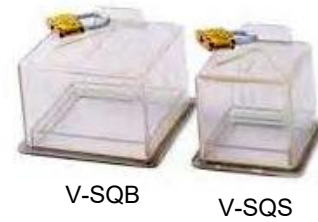
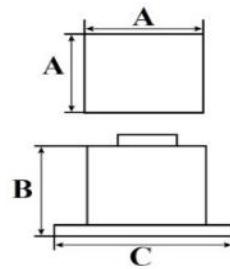
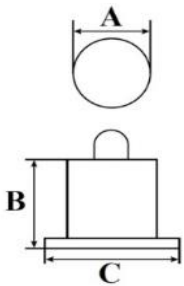


ELECTRICAL LOCKOUT

ELECTRICAL LOCKOUT

ELECTRICAL PANELS & SWITCHES LOCKOUT

Item Code	Description	A	B	C
V-CIR-45	ROUND	45	47	50
V-CIR-55	ROUND	55	48	60
V-SQS	SQUARE	60	65	72
V-SQB	SQUARE	85	65	95



MUSHROOM PANELS & SWITCHES LOCKOUT



V-MSTL

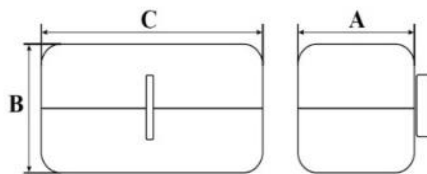
ELECTRICAL LOCKOUT

ELECTRICAL LOCKOUT

PLUG / PNEUMATIC LOCKOUT

Item Code	Cable / Hose Dia	A	B	C
V-SPLO	13mm	50mm	52mm	88mm
V-LPLO	8-19mm	92mm	96mm	165mm

- The injection molded superior grade PVC lockout specifically meant to hold inside all kind of sockets that are attached to the chords of various thickness.
- Use with any padlock to keep equipment from being plugged in accidentally.
- Ensure that the plug can't be used until the lock is removed.



V-LPLO

V-SPLO

PLUG / PNEUMATIC LOCKOUT

- Yellow color injection molded electrical lockout.
- Use with any padlock to keep equipment from being plugged in accidentally.
- Enclose the lug so that it can't be used.
- Plug Lockout accomodates high and low-voltage plugs up to 3" in diameter and 5 1/2" in length.
- 2 Sliding top lids can be used individually or together to fit small, medium and large-diameter cords up to 1 1/4".



V-CLO-E

LOTO STATION / POSTER

LOCKOUT / TAGOUT STEEL STATION

- Steel with yellow powder coated.
- Adjustable Shelves (2pcs).
- Clear Fascia.
- Dimension : 16"H x 14" W x 6" H



V-LSS16

LOCKOUT / TAGOUT PVC STATION

- Durable Plastic Material
- Five hangers for Padlocks or hasps.
- Wall Mounted.
- Dimension : 6" x 8".



V-LSP-B

LOTO POSTER



Poster Size : 610 x 455mm



Poster Size : 610 x 455mm

LOTO STATION / POSTER

LOTO STATION / POSTER

ELECTRICAL LOCKOUT KITS-V-ELK

- Combo Miniature Circuit Breaker Lockout / Fuse Lockout(5pcs) - V-CBF-COMBO5 - 1 set.
- PIN type Circuit Breaker lockout (3pcs) CBL-SET- 1 set.
- Mini Universal Circuit Breaker Lockout (with adjustable thumb screw) - V-UBL-SN - 2pcs.
- Large Circuit Breaker Lockout - V-LCB - 1pc.
- Plug / Pneumatic Lockout - V-SPLO - 1pc.
- Plug / Pneumatic Lockout - V-LPLO - 1pc.
- Electrical Plug Lockout Device - Yellow V-CLO-E - 1 pc.
- De Electric Hasp 3 holes / 3mm shackle VH-N33 - 2pcs.
- De Electric Hasp 3 holes / 6mm shackle VH-N36 - 2pcs.
- Electrical Panel Lockout - V-CIR-45 - 1pc.
- Electrical Panel Lockout - V-CIR-55 - 1pc.
- Electrical Panel Lockout - V-SQS - 1pc.
- Electrical Panel Lockout - V-SQB - 1pc.
- Mushroom Push Button Lockout - V-MSTL- 1pc.
- Safety Padlocks, Red - Key Different - V-PLSP-KD - 5 pcs.
- Lockout Tags - 20pcs.
- Electrical Lockout Bag - 1pc.



V-ELK

ELECTRICAL LOCKOUT KITS-V-VLK

- Gate Valve Lockout - V-GVL-02 - 1pc.
- Gate Valve Lockout - V-GVL-04 - 1pc
- Gate Valve Lockout - V-GVL-06 - 1pc
- Ball Valve Lockout - V-BV01 - 1pc.
- Ball Valve Lockout - V-BV02 - 1pc.
- Universal Butterfly Valve Lockout V-BFV - 1pc.
- Vinyl Coated Hasp - VH-25 - 1pc.
- Vinyl Coated Hasp - VH-39 - 1pc.
- Safety Padlock - V-PRS-3A - 3pcs.
- Multiple Cable Lockout - V-UML - 1pc.
- Safety Lockout Tags - 10ps.
- Valve Kit Lockout Bag - 1pc.



V-VLK

LOTO STATION / POSTER

Delta Sama Jaya Sdn.Bhd.



DELTA SAMA JAYA
www.substation.com.my

We are constantly reviewing and updating our products,
for the latest information please call us on (+603) 9281 3778
or visit our website at: www.substation.com.my